



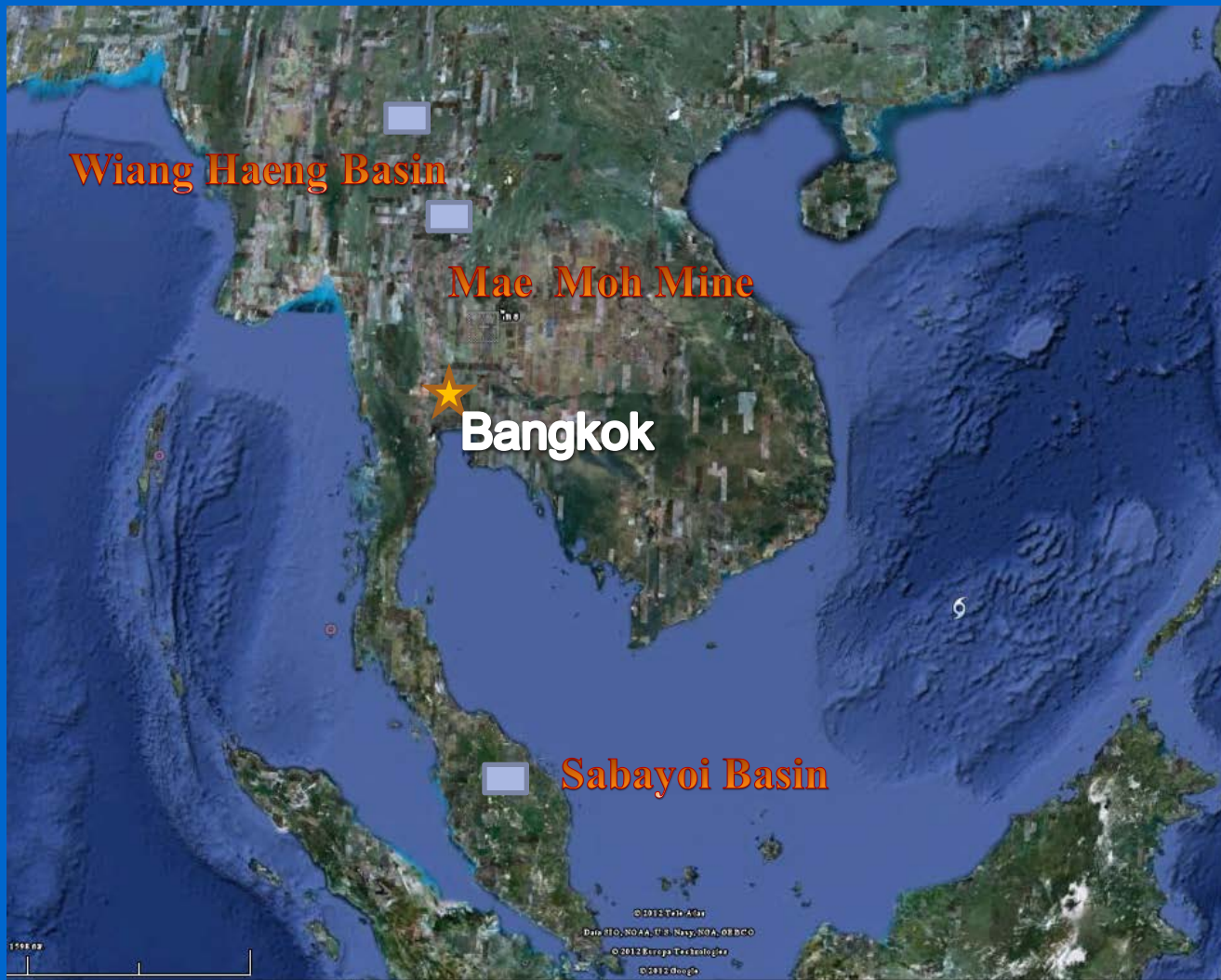
EGAT's Coal Classification



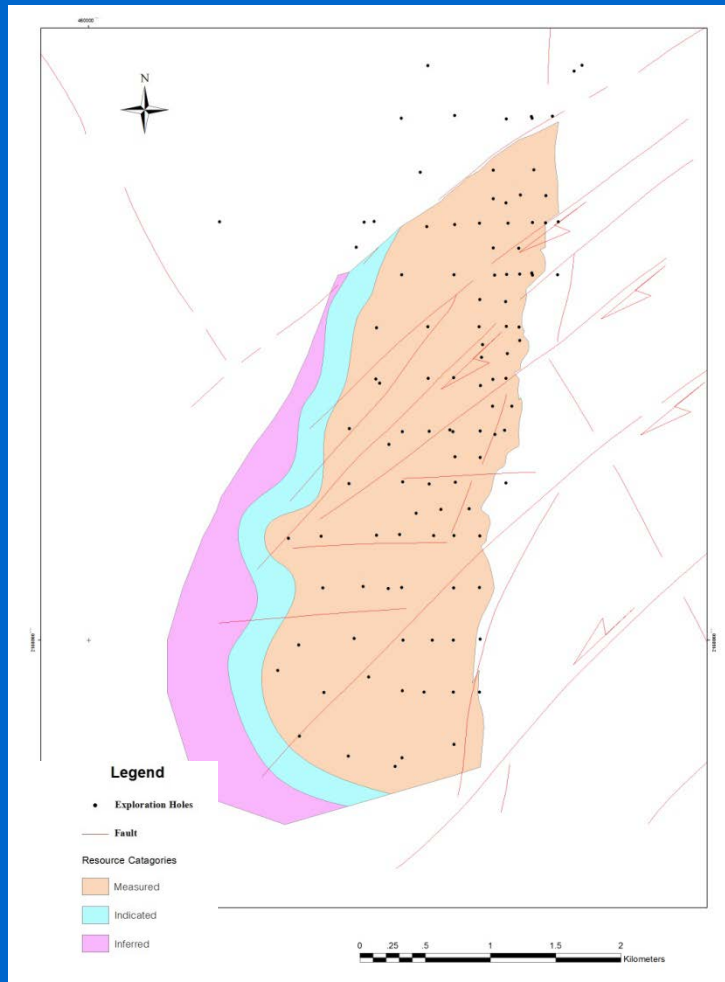
Mr. Sutthipan Janchotwong



EGAT's Coal Basins/Mine



Wiang Haeng Coal Basin



- Measured Resource 103.51 MT
- Indicated Resource 16.38 MT
- Inferred Resource 19.07 MT

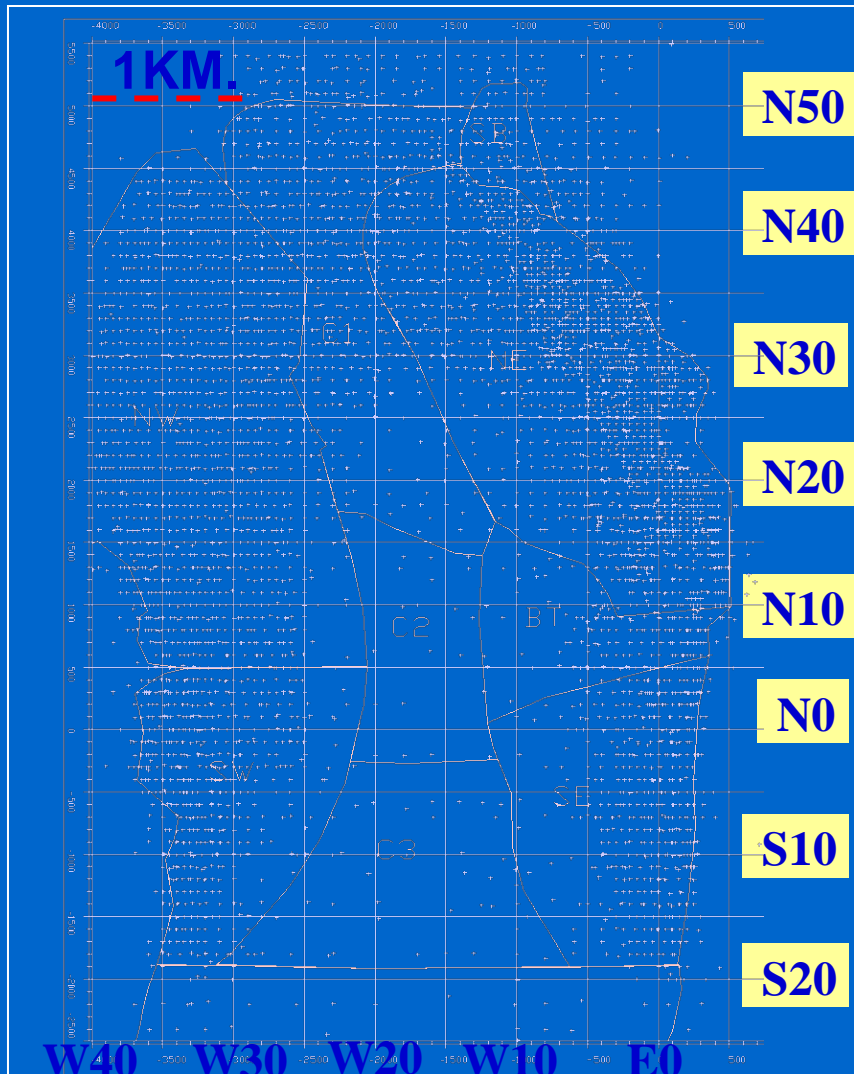
TOTAL 138.96 MT

Australian Standard Classification

- Measured Resource < 200 m.
- Indicated Resource 200 – 400 m.
- Inferred Resource > 400 m.

EGAT, 1999

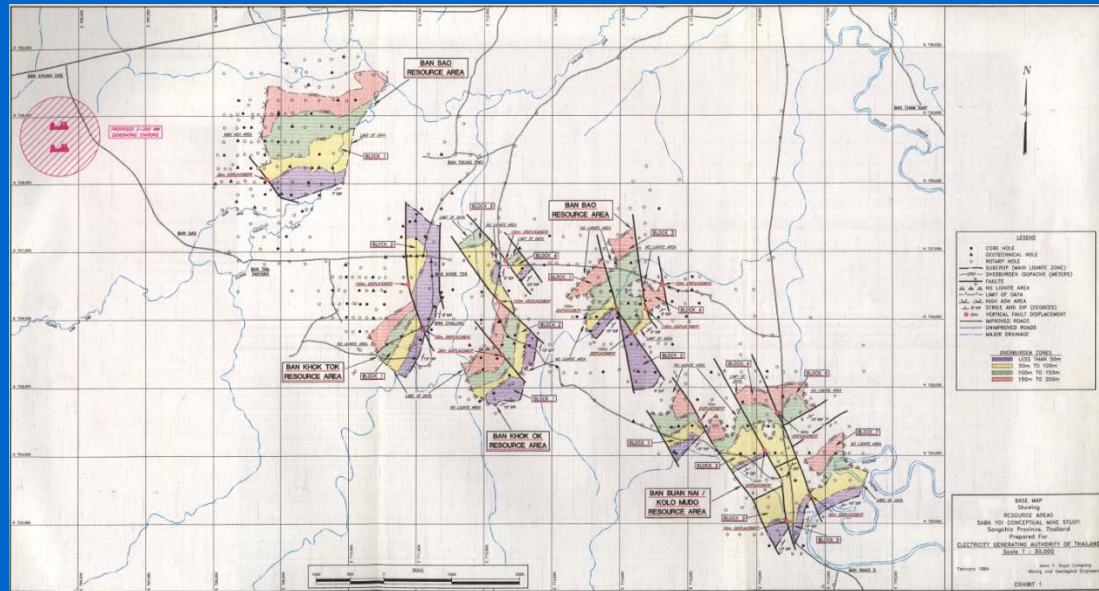
Mae Moh Coal Mine



- Measured Resource 1,140 MT
- Mineable Reserve 890 MT

Australian Standard Classification

Sabayoi Coal Basin



- Demonstrated Resource 135 MT (hole spacing 125 m)

United States Geological Survey Classification

John T. Boyd, U.S.A ,1994