



P1W5: North Sumatra-Mergui Basin Cross Border Case Study

Progress Work
THAILAND

@Yogyakarta, INDONESIA
11-15 October 2011



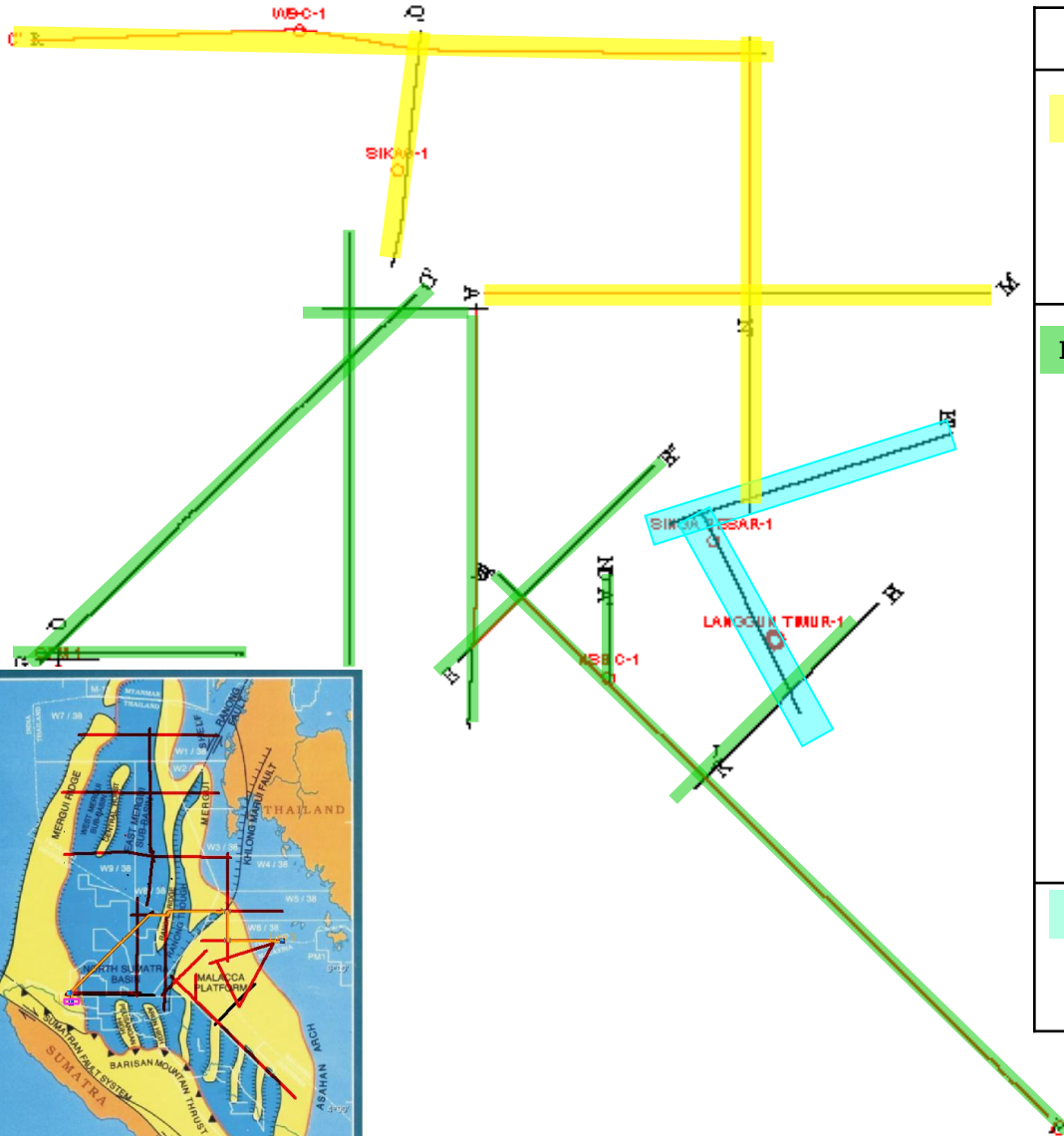
Previous workshops

P1W1: Krabi, THAILAND, 12-14 May 2009

P1W2: Medan, Parapat & Bahorok, INDONESIA, 27-30 April 2010

P1W3: Langkawi, MALAYSIA, 2-5 August 2010

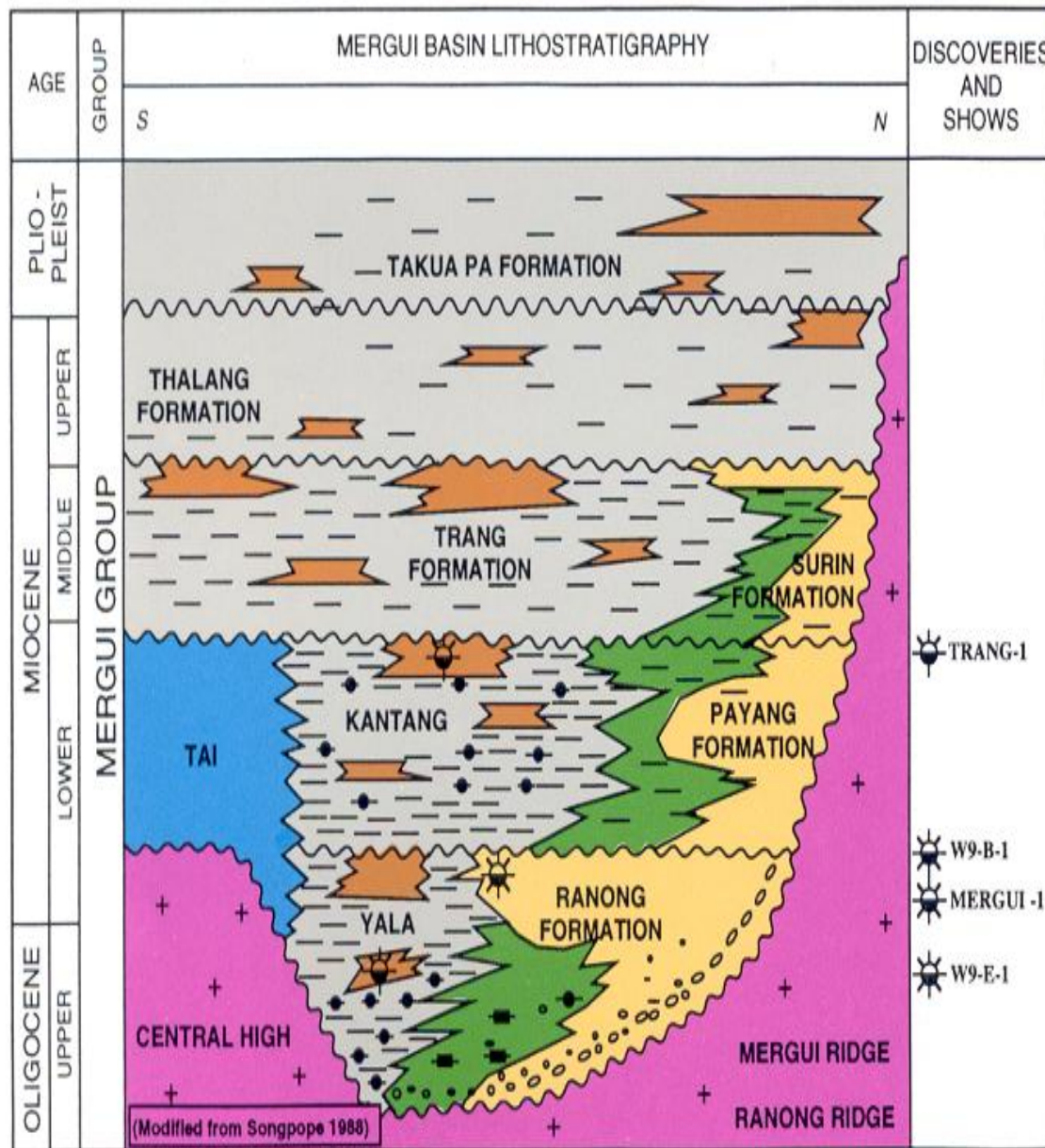
P1W4: Chiang Mai, THAILAND, 21-26 February 2011



Country	Seismic lines	Wells
Thailand	4 lines DMR95-102, DMR95-125, DMR95-141, DMR95-150	1) Si Kao-01, 2) W9-C-1
Indonesia	12 lines 123A_SP 4437-102_MV, 123B_SP 6251 - 4373_MV, 132_SP 6122 - 101_MV, 209C_SP 5766 - 4846_MV, 210_SP 101 - 3040_MV, 259_SP 102 - 2481_MV, 463-85_SP 100 - 7102_MV, 506-85_SP 714 - 100_MV, NSO 69-25_SP 697 - 124_SV, NSO 69-46_SP 1 - 1929_SV, NSO 80-503_SP 101 - 1694_SV, NSO 81-13_SP 200 - 4165_SV	1) Gleumpang Minyeuk-1, 2) NSB-C1
Malaysia	2 lines 83MS02 83MS09	1) LANGGUNG TIMUR-1, 2) SINGA BESAR-1

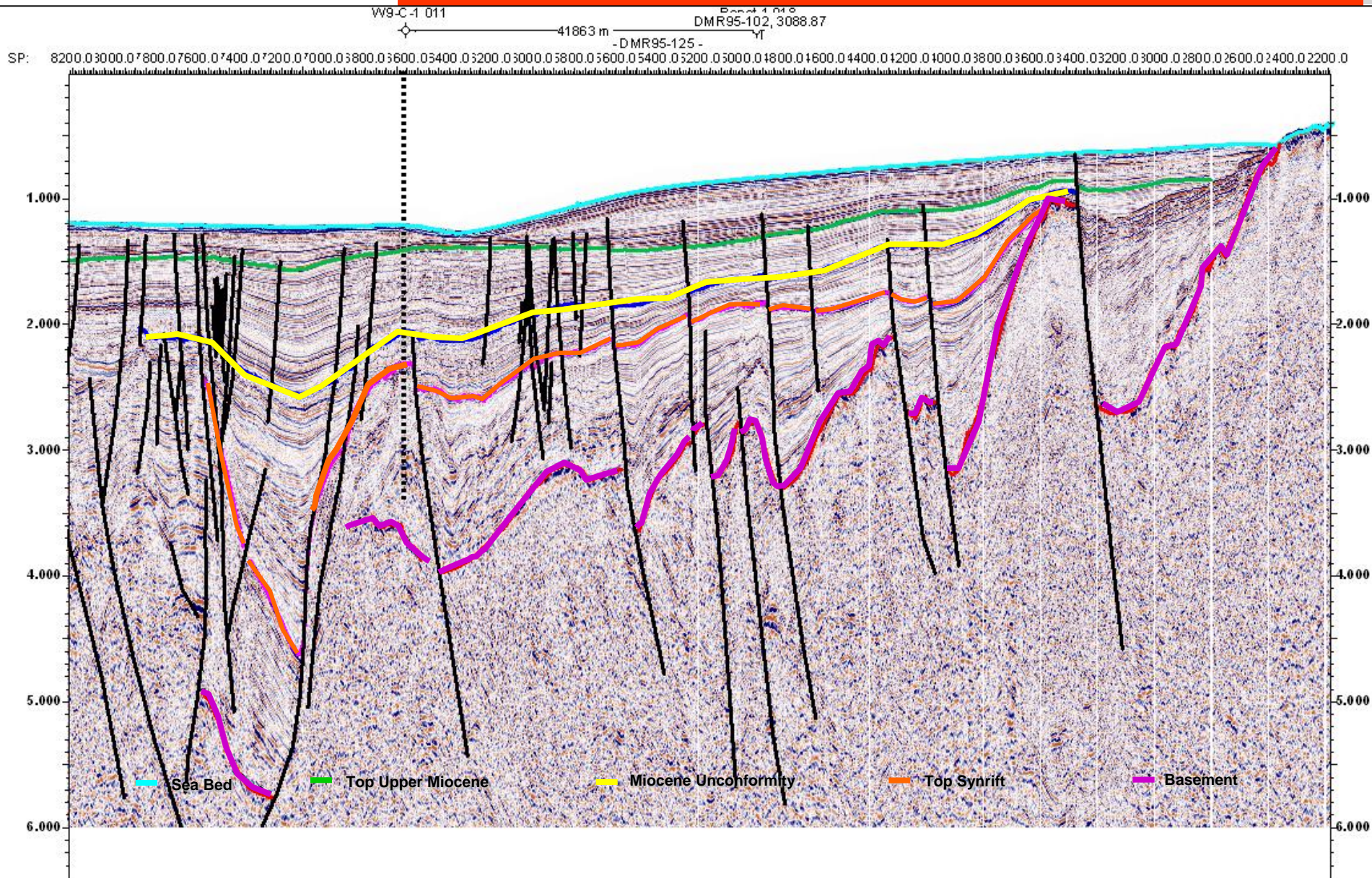


Petroleum System Reservoir Rocks



- **Oligocene Shallow Marine/Deltaic Sandstone**
- **Oligocene Mid Fan Turbidites**
- **Lower Miocene Sandstone**
- **Lower Miocene Carbonate Build-up**

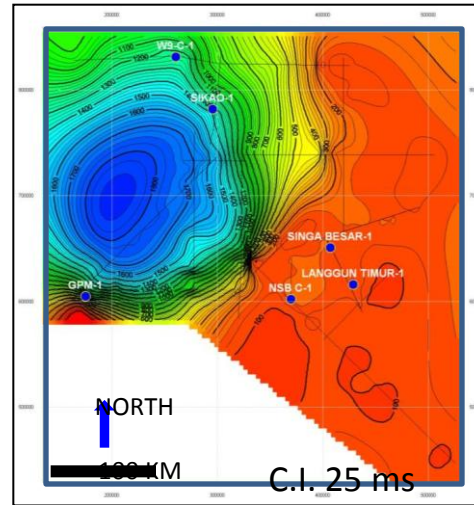
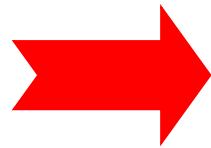
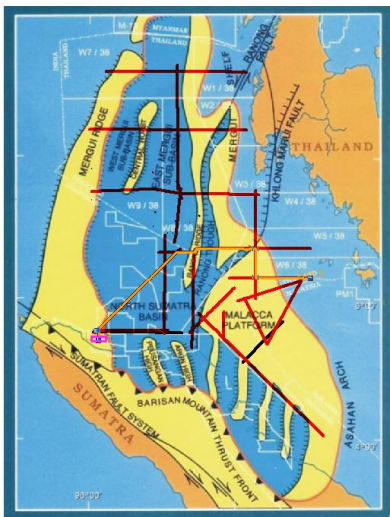
Horizon Agreement



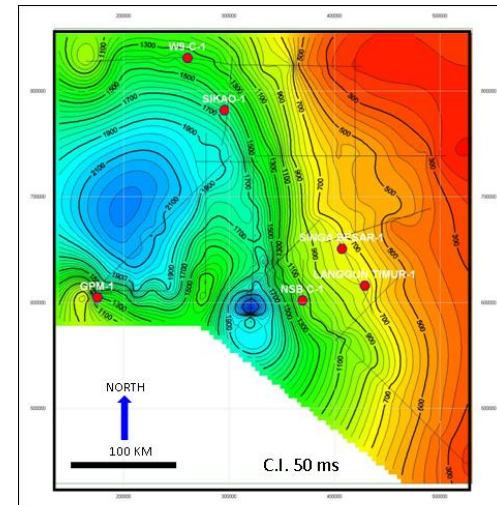
Export each horizon for Indonesia team generate the structural map & isopach map

Address: F:\P1\3-P1W2-Medan Indo 26-30 Apr 2010\CCOP-export

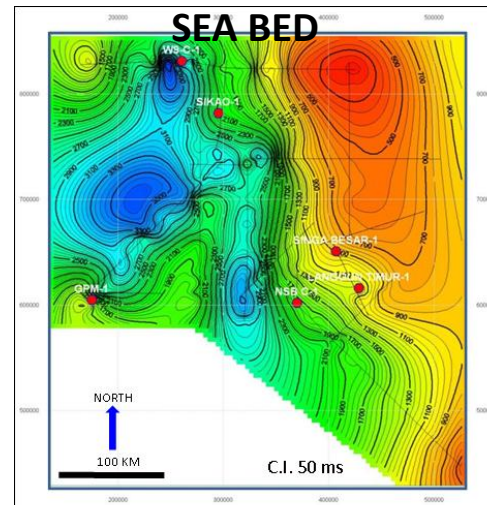
Name	Size	Type	Date Modified
Basement	3,154 KB	DAT File	3/5/2553 11:09
DMR95-102	194 KB	JPG File	3/5/2553 11:24
DMR95-125	266 KB	JPG File	3/5/2553 11:40
DMR95-141	204 KB	JPG File	3/5/2553 11:51
DMR95-150	256 KB	JPG File	3/5/2553 11:46
Faults	15 KB	DAT File	3/5/2553 11:20
Miocene Unconformity	1,474 KB	DAT File	3/5/2553 11:08
Sea Bed	3,479 KB	DAT File	3/5/2553 11:07
Top Synrift	1,407 KB	DAT File	3/5/2553 11:09
Top Upper Miocene	1,735 KB	DAT File	3/5/2553 11:08



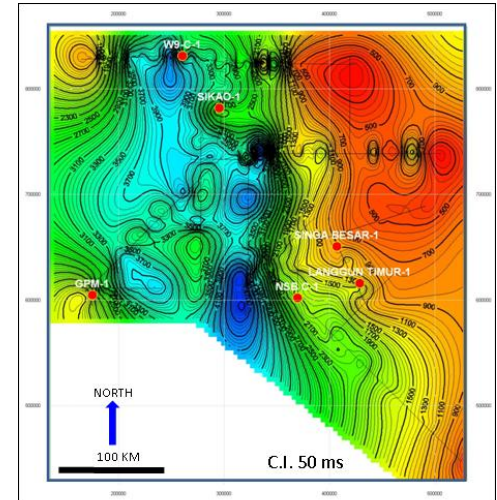
**TIME STRUCTURE MAP
 SEA BED**



Top Upper Miocene

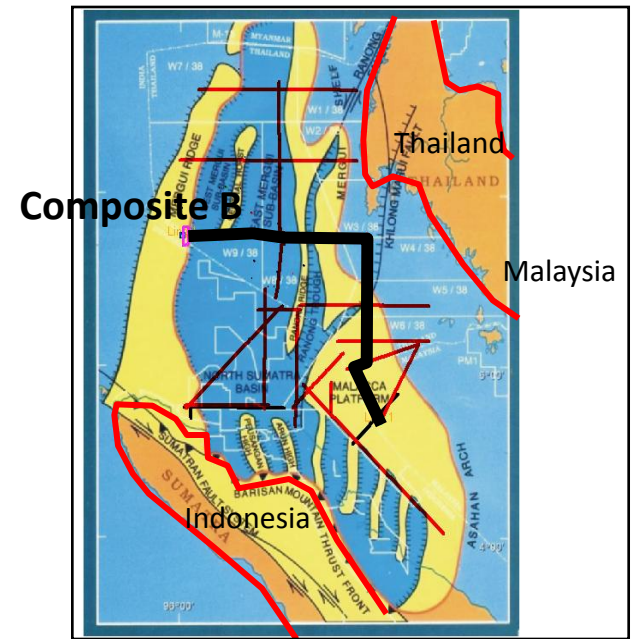
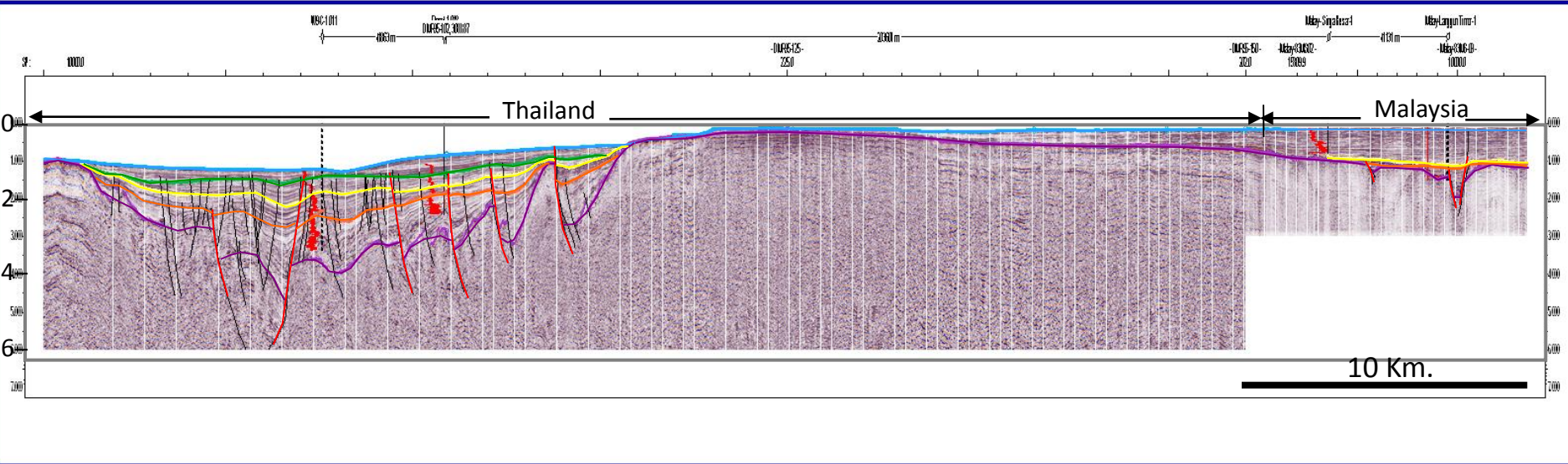


Miocene Unconformity

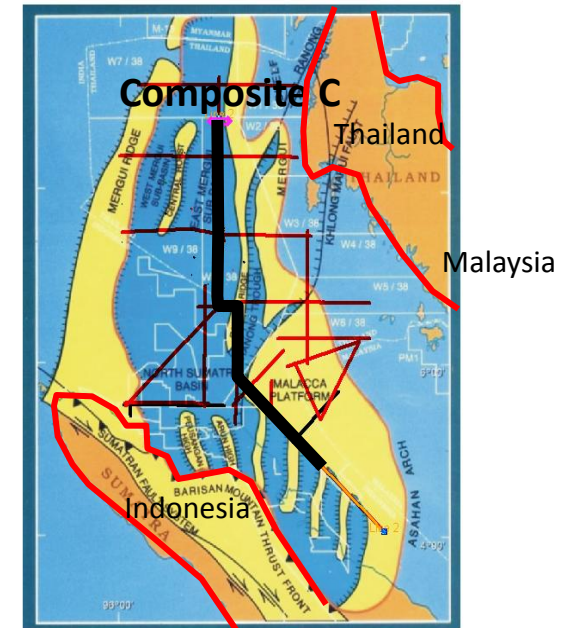
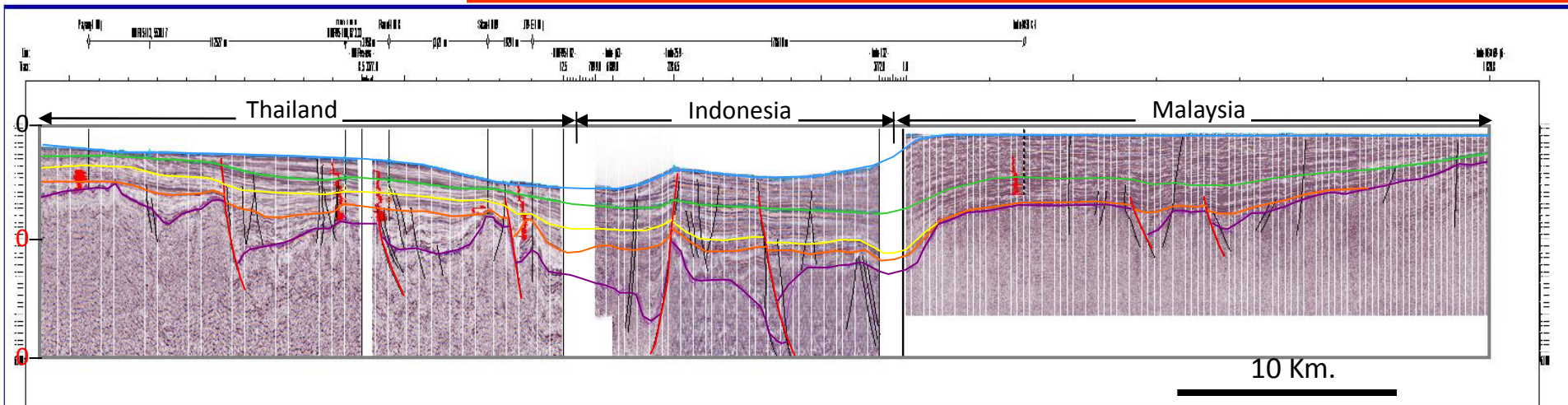


**TIME STRUCTURE MAP
 BASEMENT**

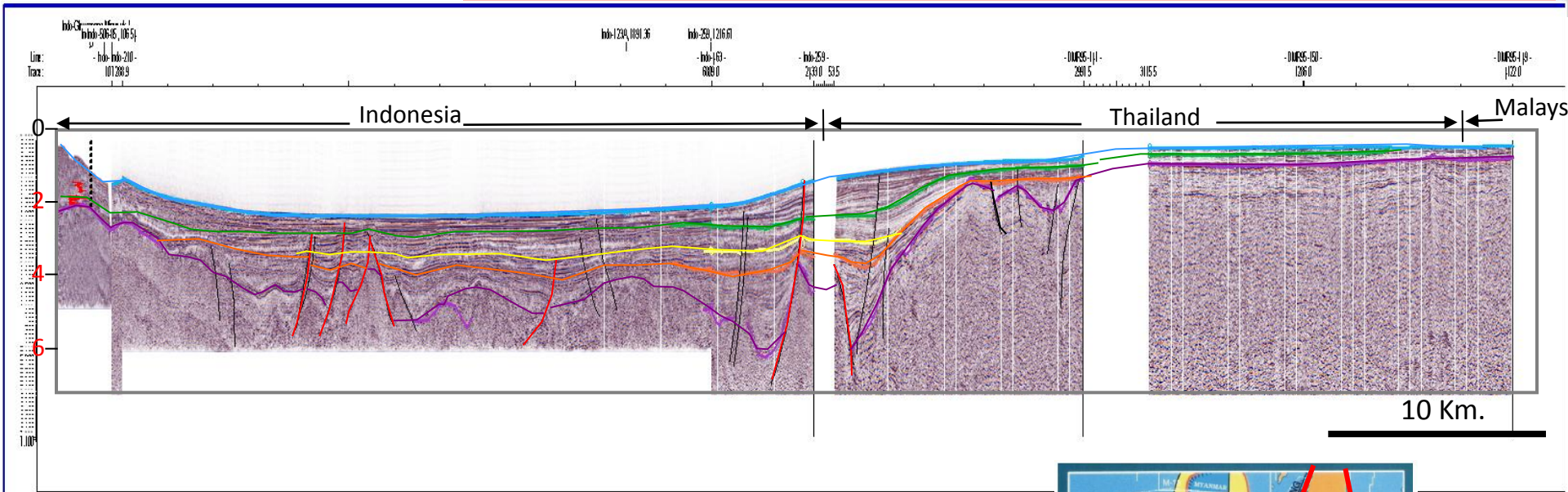
Composite line Agreement



Composite line Agreement



Composite line Agreement



Indonesia

- update the basin modeling

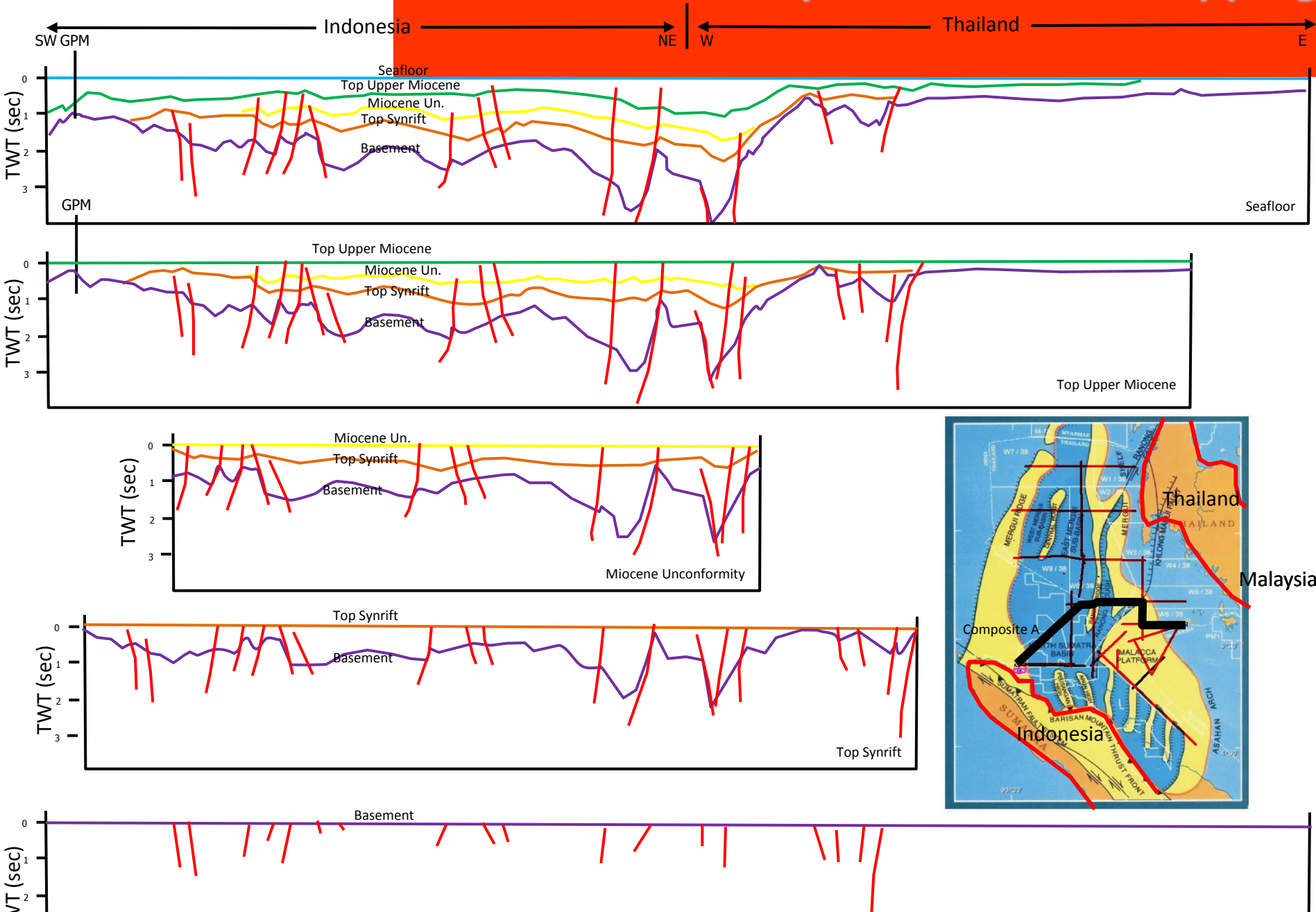
Malaysia

- well correlation
- carry out the seismic facies mapping
- construct the chronostratigraphic chart and Common Risk Segment (CRS) map

Thailand

- do schematic structural cross-section
- do back stripping each horizon

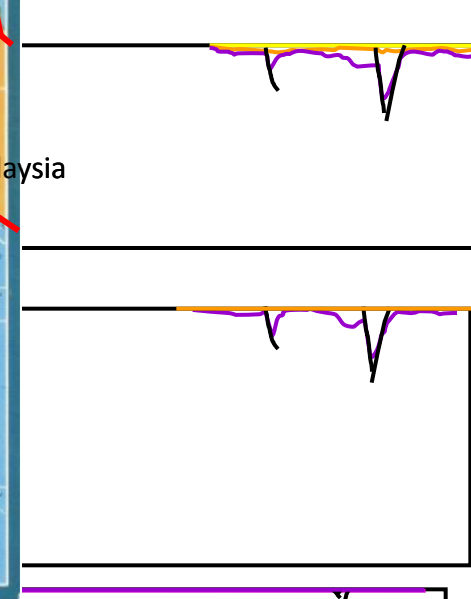
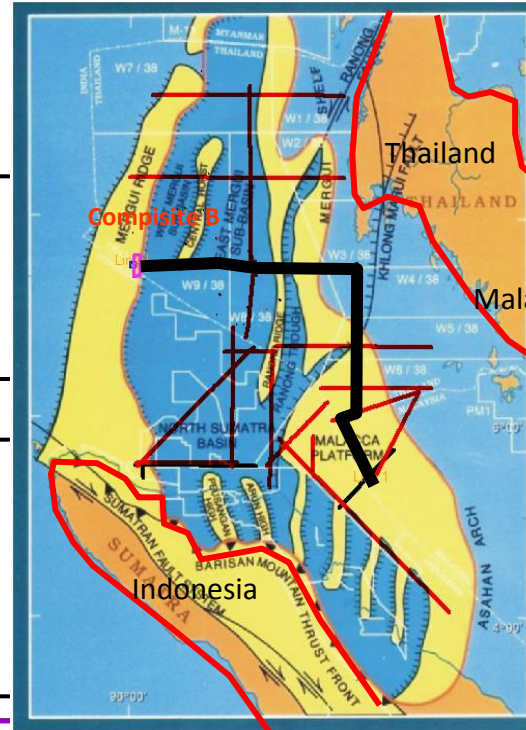
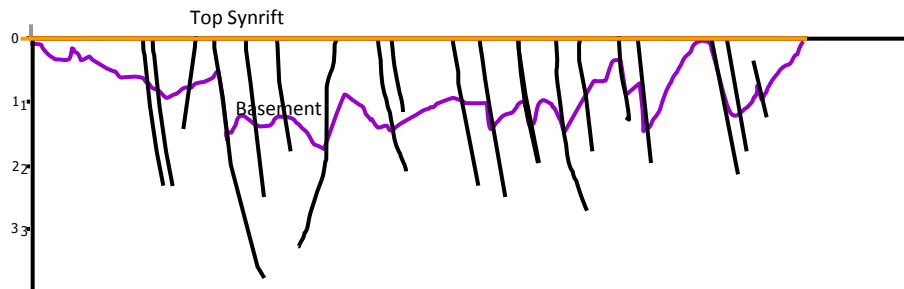
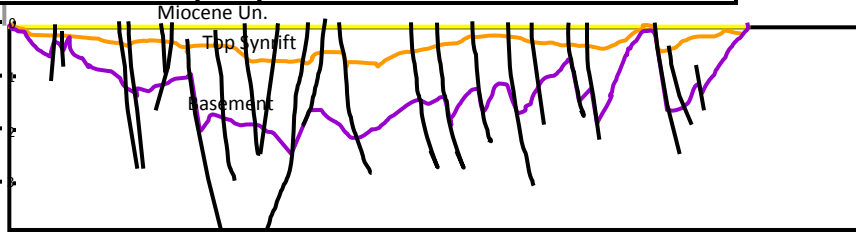
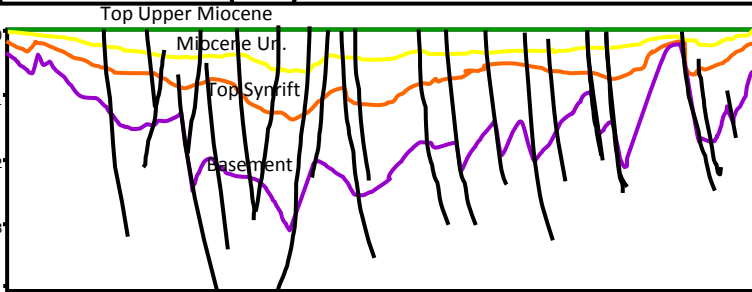
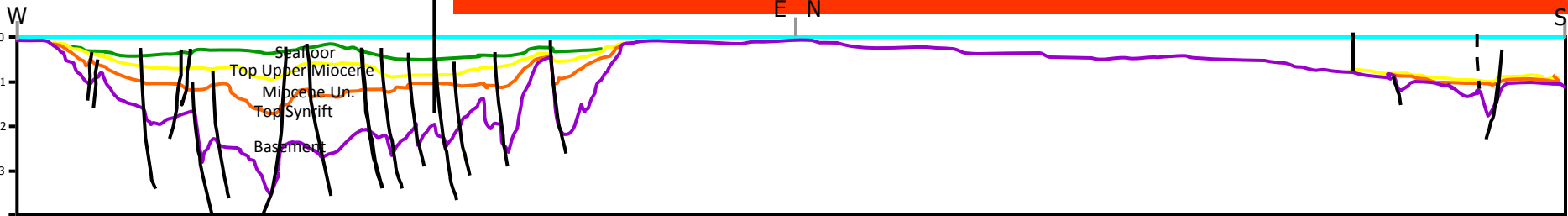
Composite A - Back stripping



Composite B - Back stripping

W9C-1 Ranot-1

Singa-Besar-1 Langgun Timor-1



Composite C - Back stripping

