



Autoridade Nacional do Petróleo

Timor-Leste

The Road to be the Leading Petroleum Authority in the Region

Project Area – JPDA (Conch- 1 and Hydra- 1)

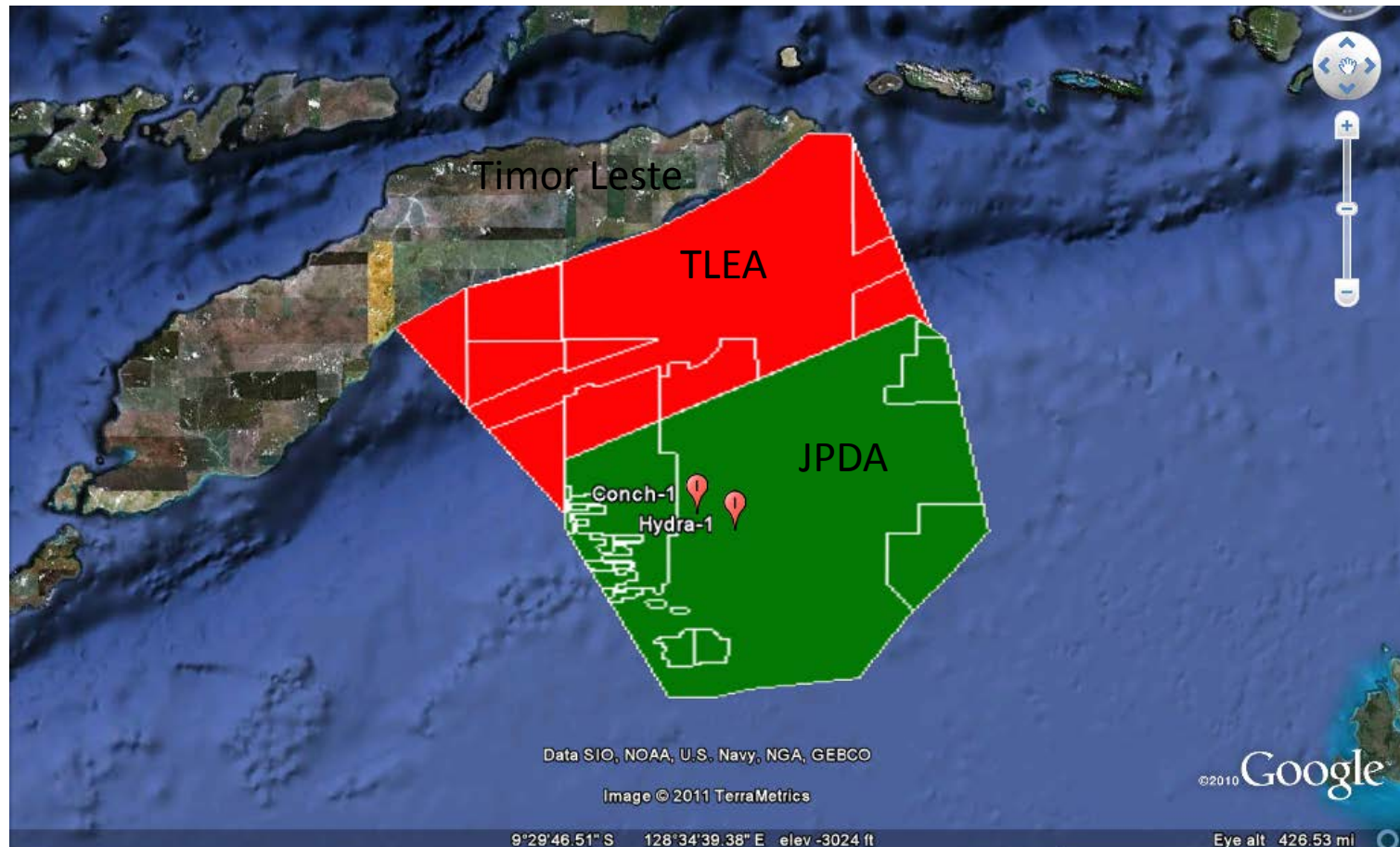
Emanuel Sebastião Silva Assis
Exploration and Data Management Officer
National Petroleum Authority - Timor Leste



Autoridade Nacional do Petróleo

Timor-Leste

The Road to be the Leading Petroleum Authority in the Region



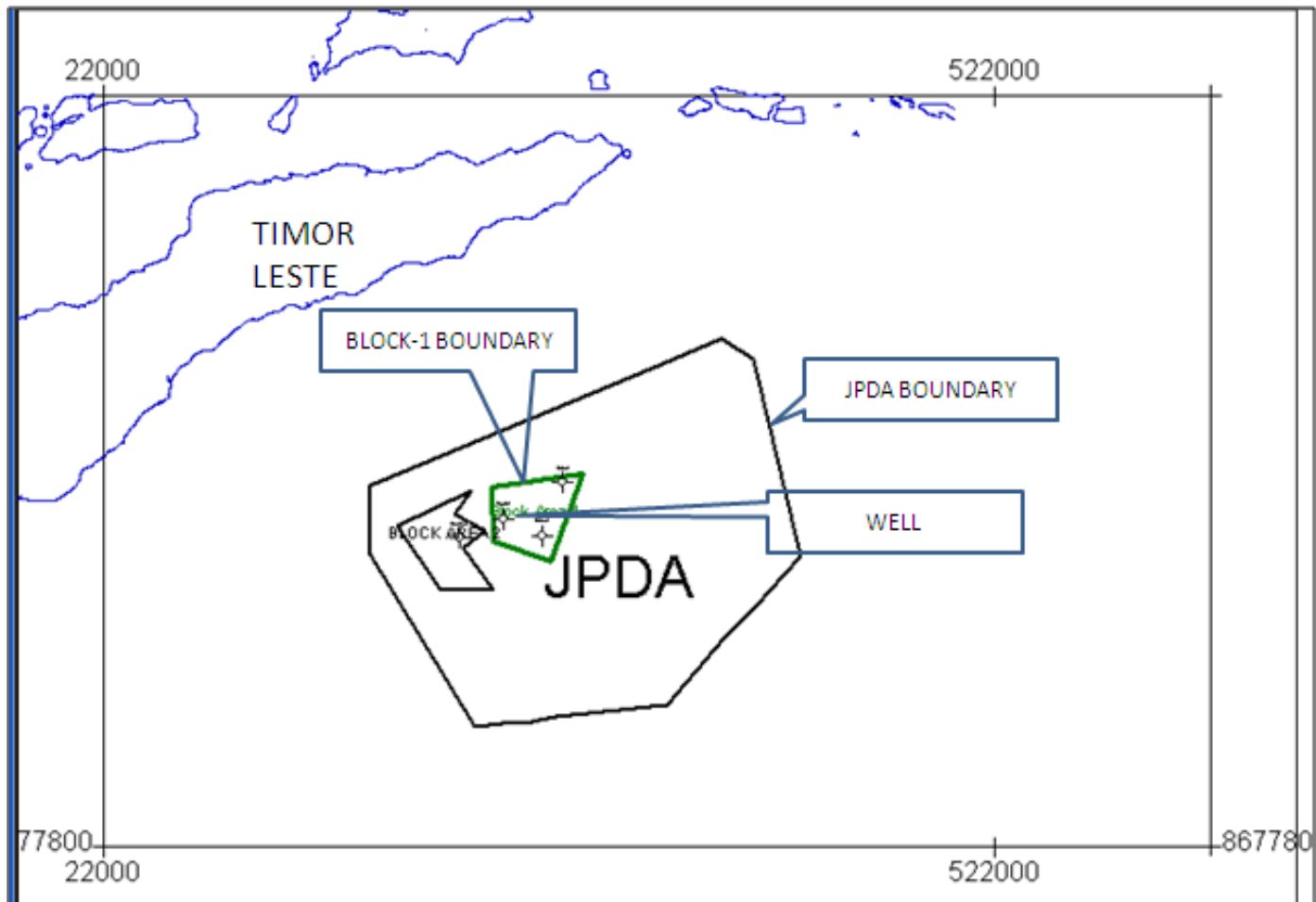


Autoridade Nacional do Petróleo

Timor-Leste

The Road to be the Leading Petroleum Authority in the Region

Data for this workshop





Autoridade Nacional do Petróleo

Timor-Leste

The Road to be the Leading Petroleum Authority in the Region

Project Coordinate System [X]

Standard US Projections | Other Coordinate System

NOTE: Data already loaded are unaffected by changing Units (feet/meters). Lat-Long will change if the coordinate system is changed, but XY's are unaffected. To change XY's, export to different coordinate system.

XY (Surface) Units: Feet Meters

Select Project Coordinate System from another project...

XY Coordinates Only (Undefined Coordinate System)

Defined Coordinate System

Coordinate System Group: Universal Transverse Mercator

Coordinate System: Zone 52S (126 E to 132 E)

Geodetic Datum: WGS 1984

Ellipsoid: WGS 1984

Define New Coordinate System under Group "Customized Coordinate System"

Base on Current Coordinate System

Start with Blank Settings

Test the Conversion between Latitude/Longitude and XY

Latitude/Longitude Format: Decimal Degrees Deg Min Sec

Latitude: => Northing (Y):

Longitude: <= Easting (X):

NOTE: For West Longitude and South Latitude use negative degrees



Autoridade Nacional do Petróleo

Timor-Leste

The Road to be the Leading Petroleum Authority in the Region

Data for this workshop - Continue

- MAIN PROJECT- Geographic Reference System
- POLYGON – X,Y, LAT, LONG (GEOGRAPHIC)
- CULTURE DATA- SHAPE FILES
- WELLS
 - X,Y,LAT, LONG
 - LAS, ASCII DATA (WELL LOGS)



Autoridade Nacional do Petróleo

Timor-Leste

The Road to be the Leading Petroleum Authority in the Region

WELL DATA

Edit Well Data

Well List: Conch-1, Hydra-1, Kelb-1

Well Name: Conch-1

Well Number: []

Elevation: 22.00000 meters

Elevation Reference: KB (Kelly Bushing)

Location Unit: Deg/Min/Sec

Geodetic Datum: WGS84

Surface Location: Latitude: -10 17 23.280, Longitude: 126 41 13.920

Surface Elevation: -105.00000 meters

Total Depth: 2763.00000 meters

Borehole Name: Conch-1

UWI: Conch-1

Symbol: Dry Hole

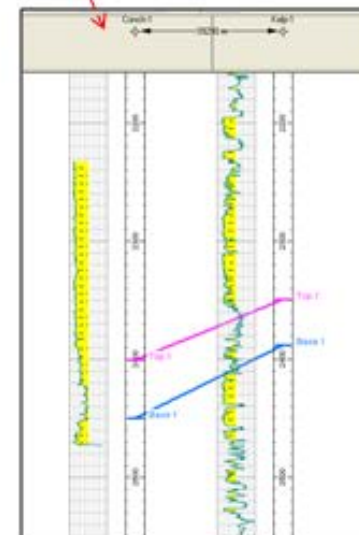
Operator Name: []

Lease Name: []

Bottom Hole Location: Start Depth: 0 meters, End Depth: 2763 meters

DATA WITHIN WELL

Log Curves	Sample Interval	Start Depth	End Depth
DAL	0.152	2295.09	2425.14
DT	0.152	2287.07	2480.31
DTL	0.152	2276.53	2469.19
DR	0.152	2232.81	2473.90
HO	0.152	2421.94	2432.50
HS	0.152	2421.94	2432.50
SEDP	0.152	2296.06	2442.52
SEMP	0.152	305.87	2442.62
SESP	0.152	2296.06	2442.52
SDVP	0.152	2296.06	2442.52
SGRC	0.152	308.92	2756.31
SP	0.152	2422.09	2464.92
SPDP	0.152	322.17	2763.01





Autoridade Nacional do Petróleo

Timor-Leste

The Road to be the Leading Petroleum Authority in the Region

Current Situation:

- **Lafaek:** Contain various information related to well in Timor Leste's Region (Improving)
– Recently Online;
- **www.anp-tl.org**



Autoridade Nacional do Petróleo

Timor-Leste

The Road to be the Leading Petroleum Authority in the Region

About Lafaek

LAFAEK - Interactive Map

Interactive Map

Monthly FACTS

Regions

PSCs

Fields

Wells

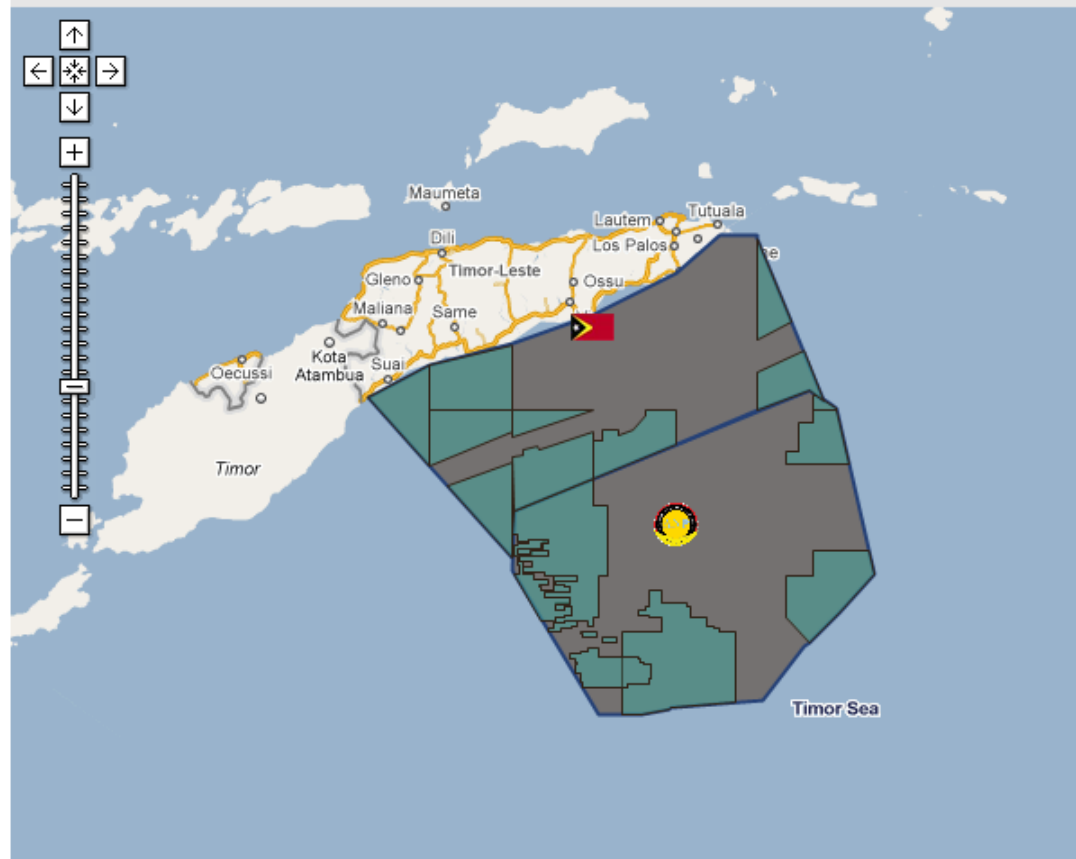
Financial Reports

Production Reports

LAFAEK - Area Map and Detail

Show Detail

Hide Detail





Autoridade Nacional do Petróleo

Timor-Leste


The Road to be the Leading Petroleum Authority in the Region

About Lafaek - Cont


LAFAEK, Well Descriptions

Aliambata-1

Baleia-1

 **Type:**
Dry Hole with Oil and Gas Shows
Status:
P&A

Banli-1 (W.Timor)

 **Type:**
Dry Hole with Oil and Gas Shows
Status:
P&A

Bard-1

 **Type:**
Dry Hole with Oil Show
Status:
P&A

 **Type:**
Dry Hole with Oil and Gas Shows
Status:
P&A
Field:
Greater Sunrise

Barnacle-1

Basilisk-1/1A

 **Type:**
Dry Hole
Status:
P&A

Bayu-1

 **Type:**
Dry Hole with Oil Show
Status:
P&A

 **Type:**
Gas - Abandoned
Status:
P&A
Field:
Bayu Undan

Bayu-2

 **Type:**
Gas - Abandoned
Status:
P&A
Field:
Bayu Undan

Bayu-3

 **Type:**
Gas - Abandoned
Status:
P&A
Field:
Bayu Undan

Bayu-4

 **Type:**
Gas - Abandoned
Status:
P&A
Field:
Bayu Undan



About Lafaek - Cont

LAFAEK, Well detail - Hydra-1

Interactive Map
Monthly FACTS
Regions
PSCs
Fields
Wells
Financial Reports
Production Reports

Well: Hydra-1

Region:[ZOC-A](#)
ANP PSC:
Field Name:
Well Use:[Exploration](#)
Well Type:[Oil and Gas](#)
Classification:[Dry Hole](#)
Well
Designation:
Main Target:
Rig Type:
Formation:
Total depth[2685](#)
(mRT):
RKB (MISLW):[22.25](#)
Seabed[121.1](#)
(mRT):
Start:[07-December-92](#)
Finish:[08-January-93](#)
Well Data[08/04/1995 12:00:00 AM](#)
(release):
Status:[P&A](#)
Well logs[No](#)
available:
LWD Logs
available:
(Logging while
Drilling)
Wireline Logs
available:





Autoridade Nacional do Petróleo

Timor-Leste

The Road to be the Leading Petroleum Authority in the Region

Current Situation:

- Exploration & Data Management Officer – New Position in ANP
- Preparing a practicable Data Management Procedures/Guideline;
- Increasing petroleum activities in Timor Leste – Increasing data to handle;



Autoridade Nacional do Petróleo

Timor-Leste

The Road to be the Leading Petroleum Authority in the Region

Objectives to be aimed in this workshop:

- To understand how CCOP – GIMS works;
- Sharing of information and experience from other Member of Countries;
- To increase knowledge in Metadata and Data Management;
- To build a link between Data Managers for future discussion (Solving Real situation/Problems, etc).



Autoridade Nacional do Petróleo

Timor-Leste

The Road to be the Leading Petroleum Authority in the Region

Terima Kasih