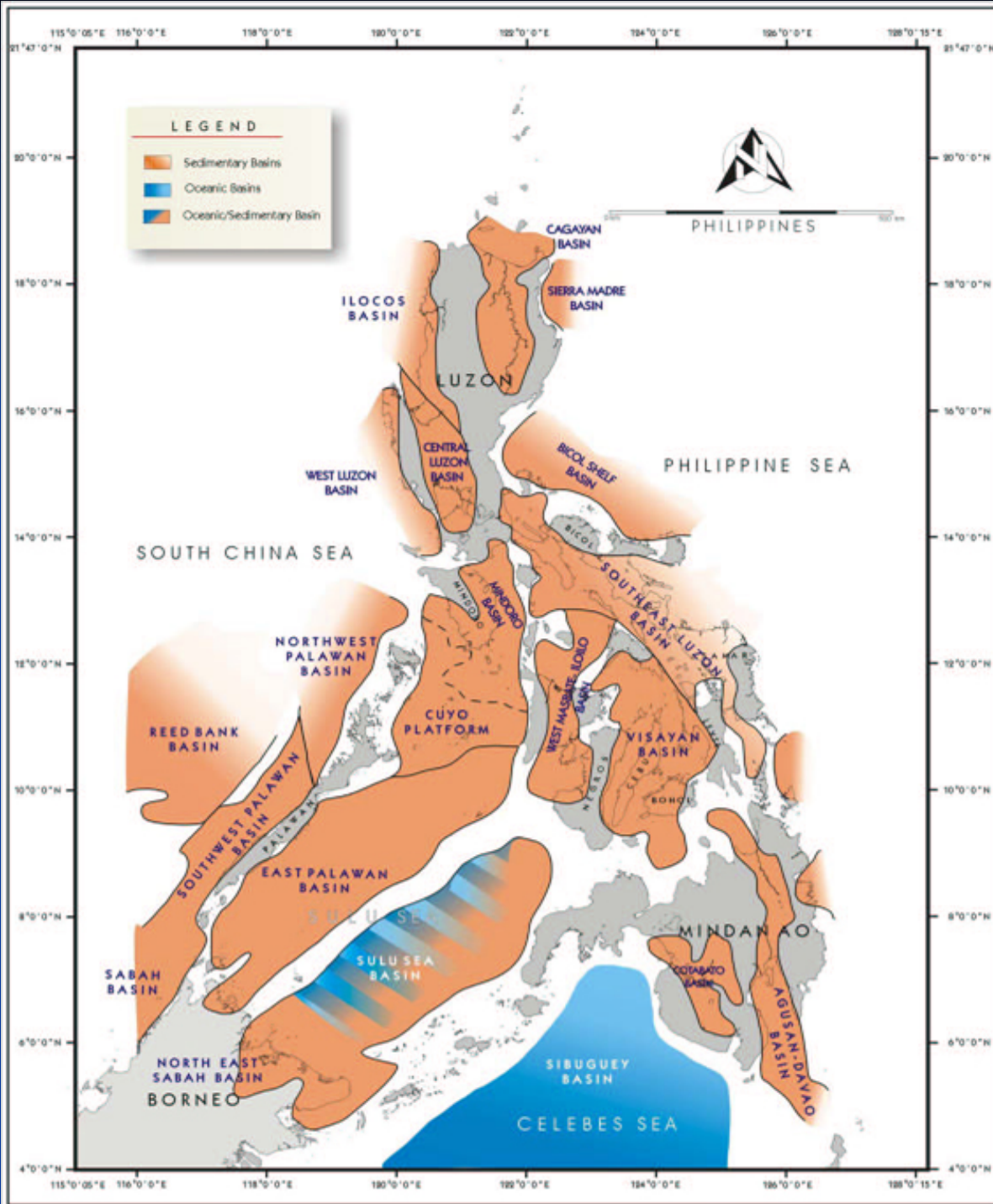


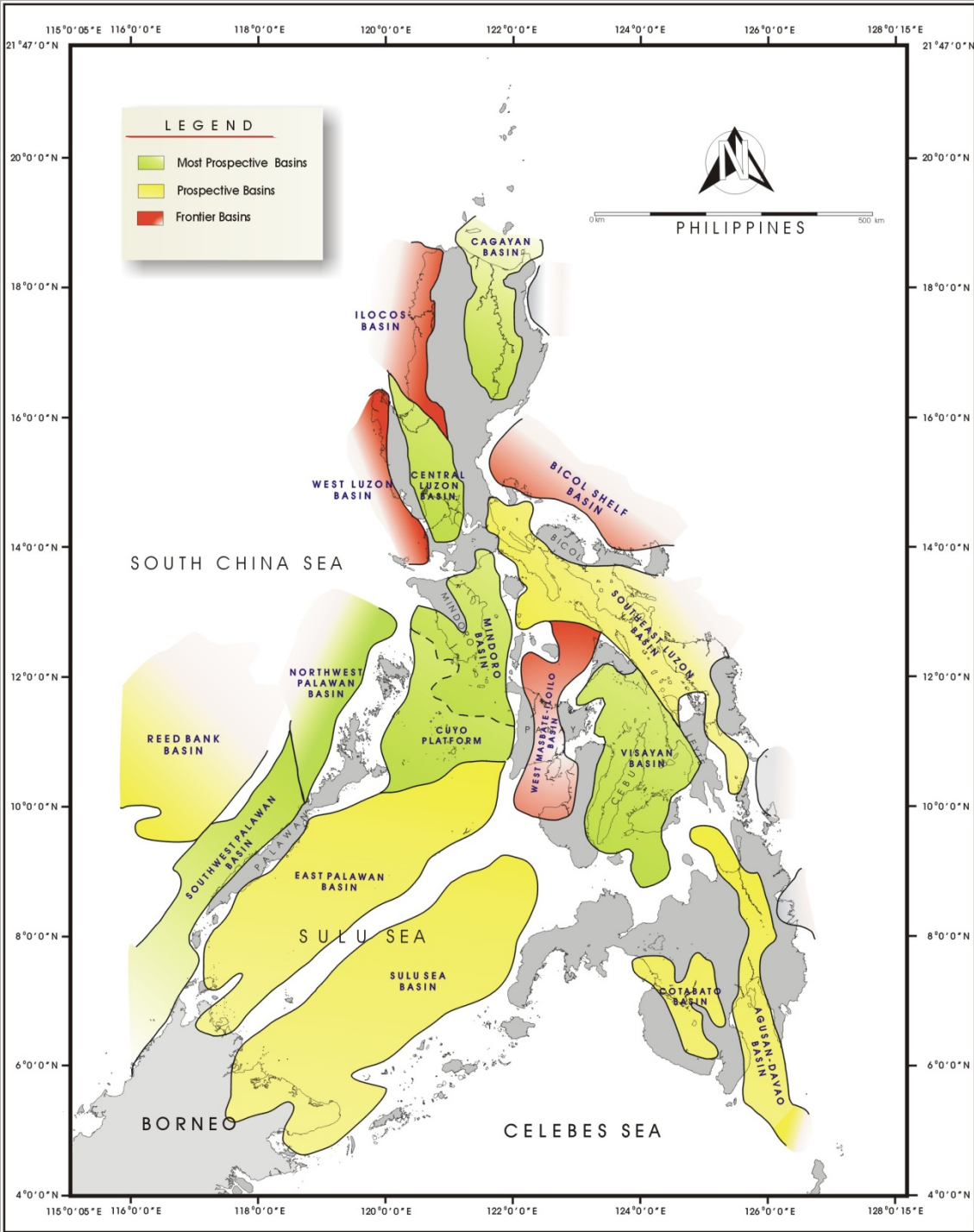


# Country Presentation for Philippines' Pilot Project



**16 sedimentary basins representing an area of over 700,000 sq km**





# SEDIMENTARY BASIN PROSPECT MAP

## Most Prospective Basins

1. NW Palawan Basin
2. SW Palawan Basin
3. Cagayan Basin
4. Visayan Basin
5. Central Luzon Basin
6. Mindoro-Cuyo Platform

## Prospective Basins

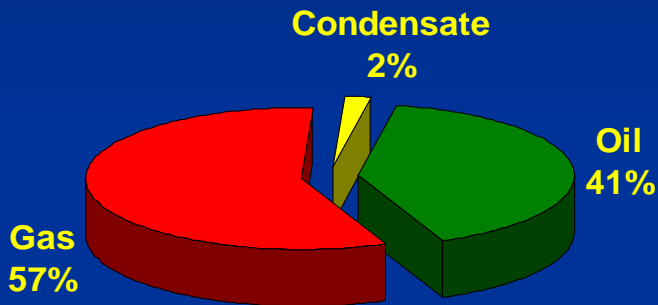
1. Sulu Sea Basin
2. **East Palawan Basin**
3. Reed Bank Basin
4. SE Luzon Basin
5. Agusan-Davao Basin
6. Cotabato Basin

## Frontier Basins

1. West Luzon Basin
2. West Masbate-Iloilo Basin
3. Ilocos Basin
4. Bicol Shelf Basin



# PhilPRA Results

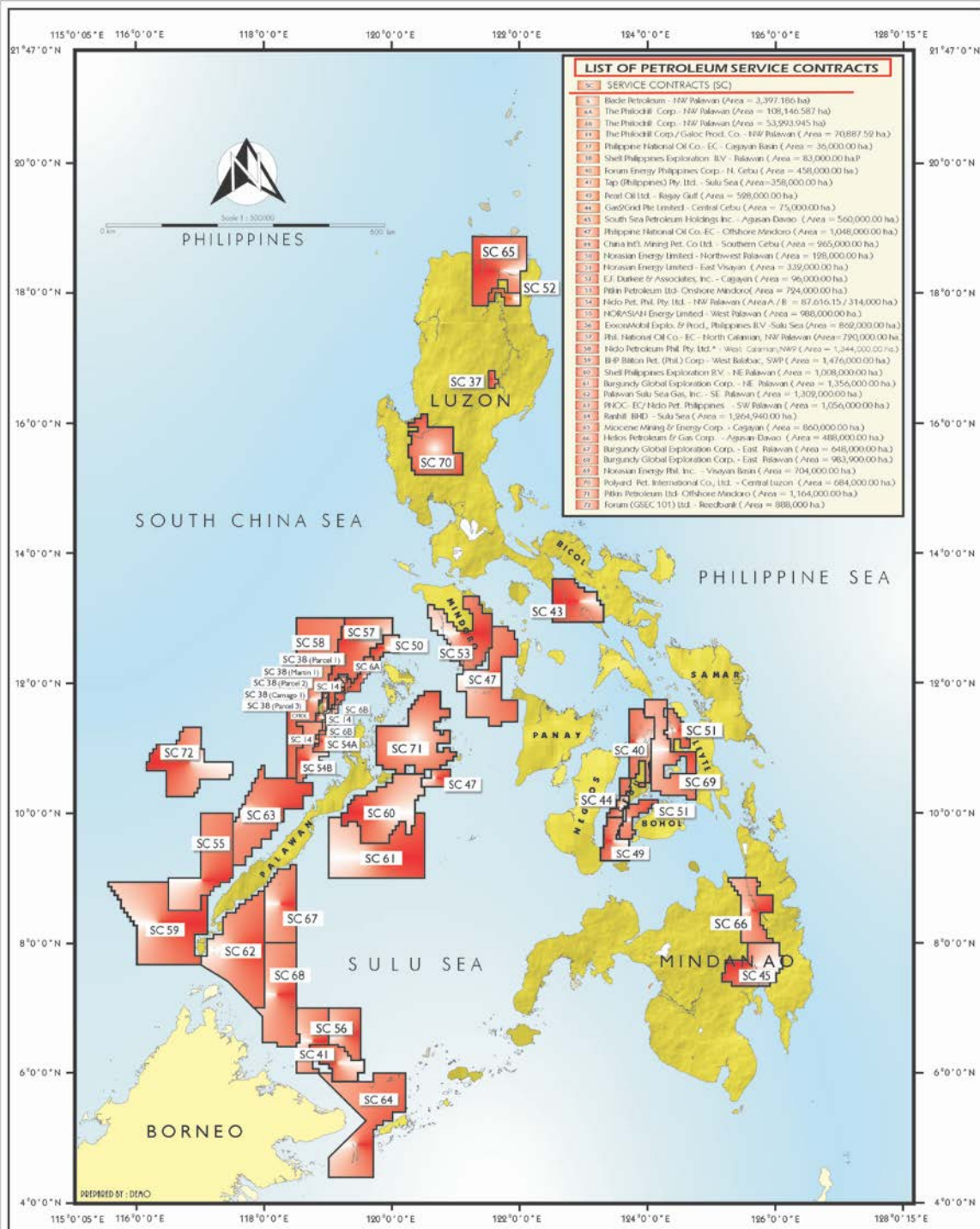


	Total	Oil	Gas	Condensate
	Million bbl o.e. (Mean)	Million bbl (Mean)	Billion cf (Mean)	Million bbl (Mean)
<b>Total Resources</b>	<b>8,895</b>	<b>3,629</b>	<b>28,531</b>	<b>165</b>
<b>Discovered Resources</b>	<b>973</b>	<b>168</b>	<b>3,841</b>	<b>109</b>
Reserves	836	43	3,772	109
Potential Recoverable Resources	137	125	68	0
<b>Undiscovered Resources</b>	<b>7,922</b>	<b>3,461</b>	<b>24,690</b>	<b>56</b>
Hypothetical (Mapped) Resources	2,848	1,341	8,112	55
Speculative (Unmapped) Resources	5,074	2,120	16,578	0



Basin	Total Resources in million barrels oil equivalent (mmboe)	Others
1. Ilocos Shelf	19	Gas constitutes 100% of the total resources.
2. Cagayan	396.4	Gas constitutes 99% of the total resources.
3. Central Luzon	902	Gas has 100% share of the total resources.
4. West Luzon	23	Gas constitutes 100% of the total resources.
5. Bicol Shelf	44	Gas constitutes 100% of the total resources.
6. Mindoro-Cuyo	831	Gas makes up 7% of the total resources.
7. Northwest Palawan	2,318	Gas and condensate make up 72% and 13% respectively, of the total resources.
8. Reed Bank	440	Gas makes up 92% of the total resources.
9. Southwest Palawan	1,355	Gas shares 60% of the total resources.
10. East Palawan	443	Gas constitutes 28% of the total resources.
11. Sulu Sea	203	Gas makes up 36% of the total resources.
12. Southeast Luzon	301	Gas constitutes 36% of the total resources.
13. West Masbate-Iloilo	5	Gas makes up 72% of the total resources.
14. Visayan	1,259.5	Gas has 28% of the total resources.
15. Agusan-Davao	196	Gas makes up 70% of the total resources.
16. Cotabato	157	Gas constitutes 45% of the total resources.



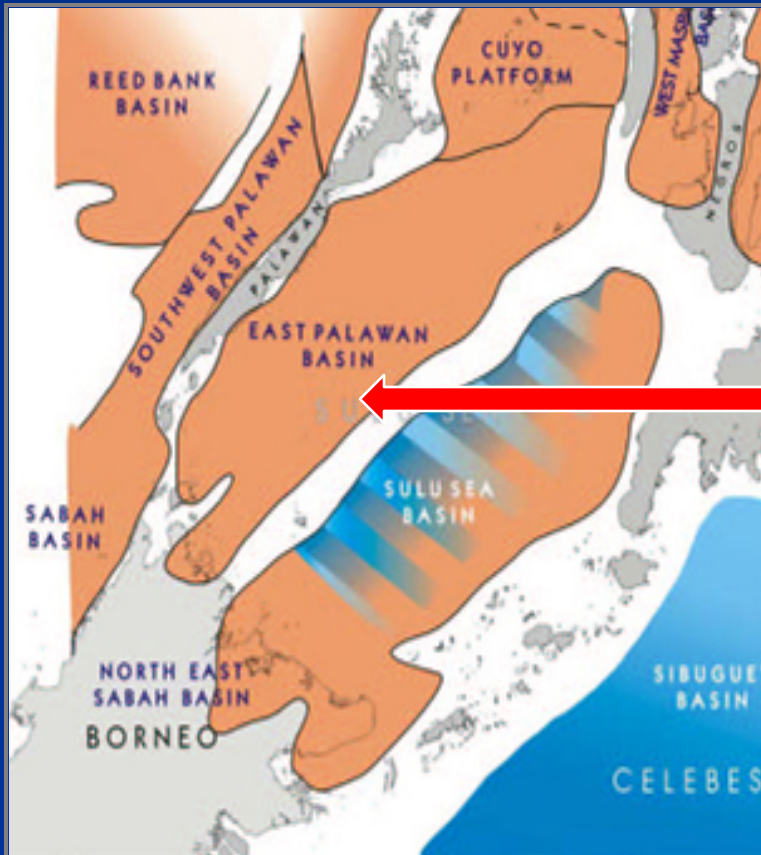


# EXISTING PETROLEUM SERVICE CONTRACTS

35 Active Service Contracts



# Sedimentary Basins in the Sulu Sea



- Sulu Sea Basin
- **East Palawan Basin**  
(situated South of Manila)



# Geology of the East Palawan Basin



- Has a total area of 9,200,000 hectares
- Has 3 to 5 km of sedimentary thickness
- Play types include Reef Build-up, Anticlinal, Stratigraphic





# Geology of the East Palawan Basin



- Potential Source Rock is Base Tertiary – Middle Miocene (Pre Nido Fm)
- Reservoir is either
  - a) Middle Miocene carbonates and sands (Nido Limestone) or
  - b) Oligocene to Miocene sands and Cretaceous sandstones



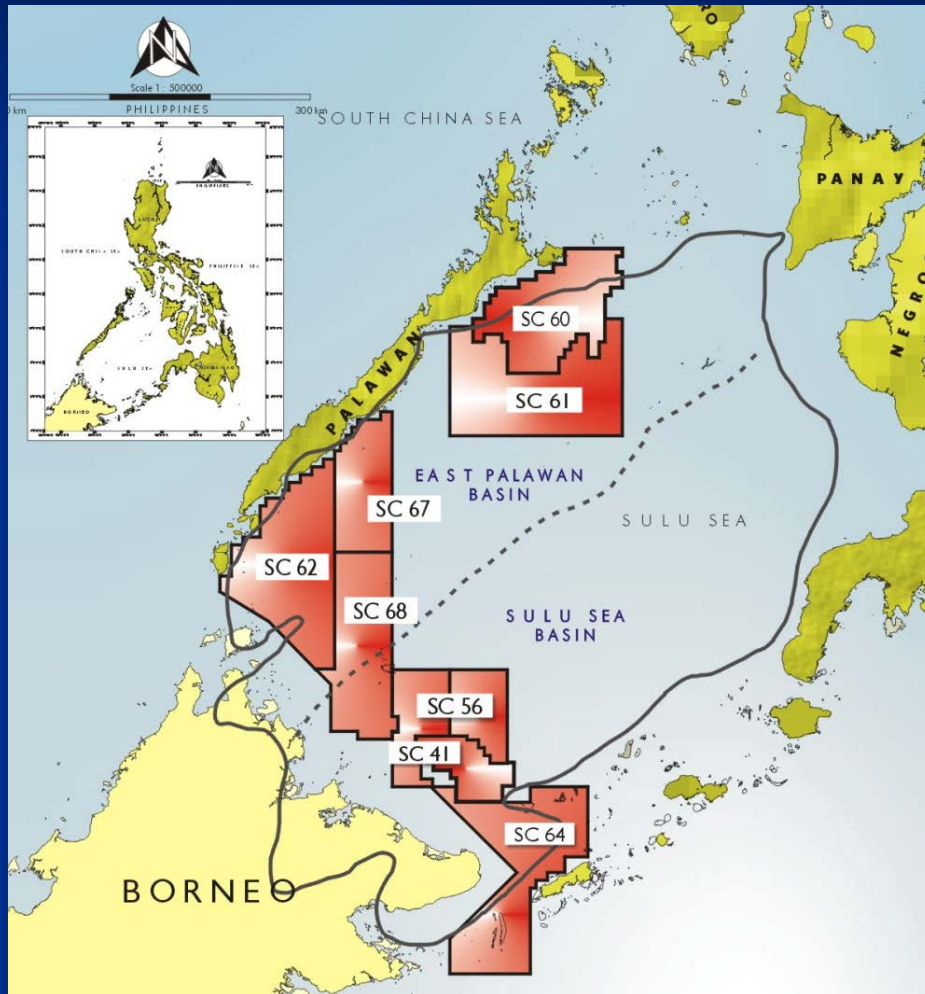
# Geology of the East Palawan Basin



- Seals are interbedded siltstone & claystone (Pagasa Fm & Matinloc Fm)
- Resource Estimates in the Basin = 166 MMBO and 279 BCFG



# Active Service Contracts



## ■ East Palawan Basin

- SC 60

- SC 61

- SC 62

- SC 67

- SC 68



# Active Service Contracts

## – East Palawan Basin



### Service Contract No. 60

- Operator - Shell Philippines Exploration B.V.
- Area Coverage – 1,088,000 hectares
- Effective Date – 10 February 2006
- Expiration Date – 10 February 2011

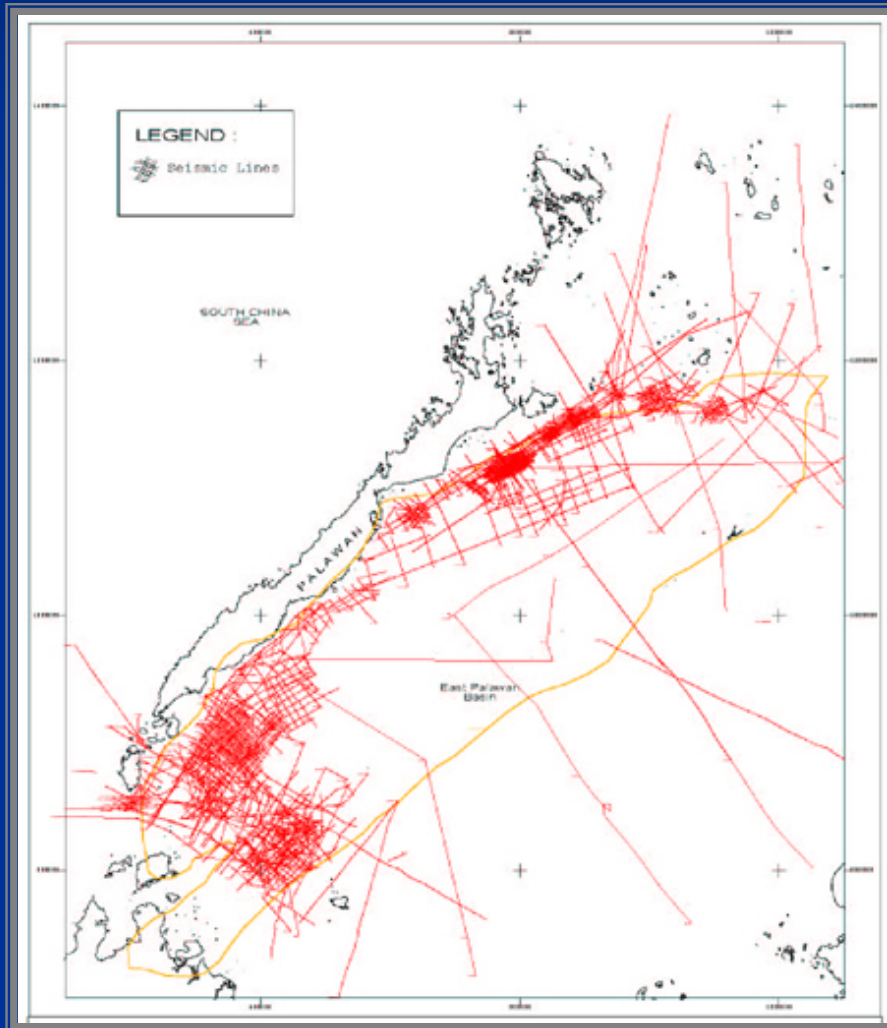
### Service Contract No. 61,67 & 68

- Operator – Burgundy Global Exploration Corp.
- Area Coverage – 1,356,000 , 648,000, & 983,900 hectares
- Effective Date – 7 July 2006 & 7 May 2008
- Expiration Date – 7 January 2011 & 7 November 2010 (1st Sub-Phase)

### Service Contract No. 62

- Operator – Palawan Sulu Sea Gas Inc.
- Area Coverage – 1,302,000 hectares
- Effective Date – 7 July 2006
- Expiration Date – 7 January 2012 (2nd Sub-Phase)

# Seismic Coverage Map – East Palawan Basin



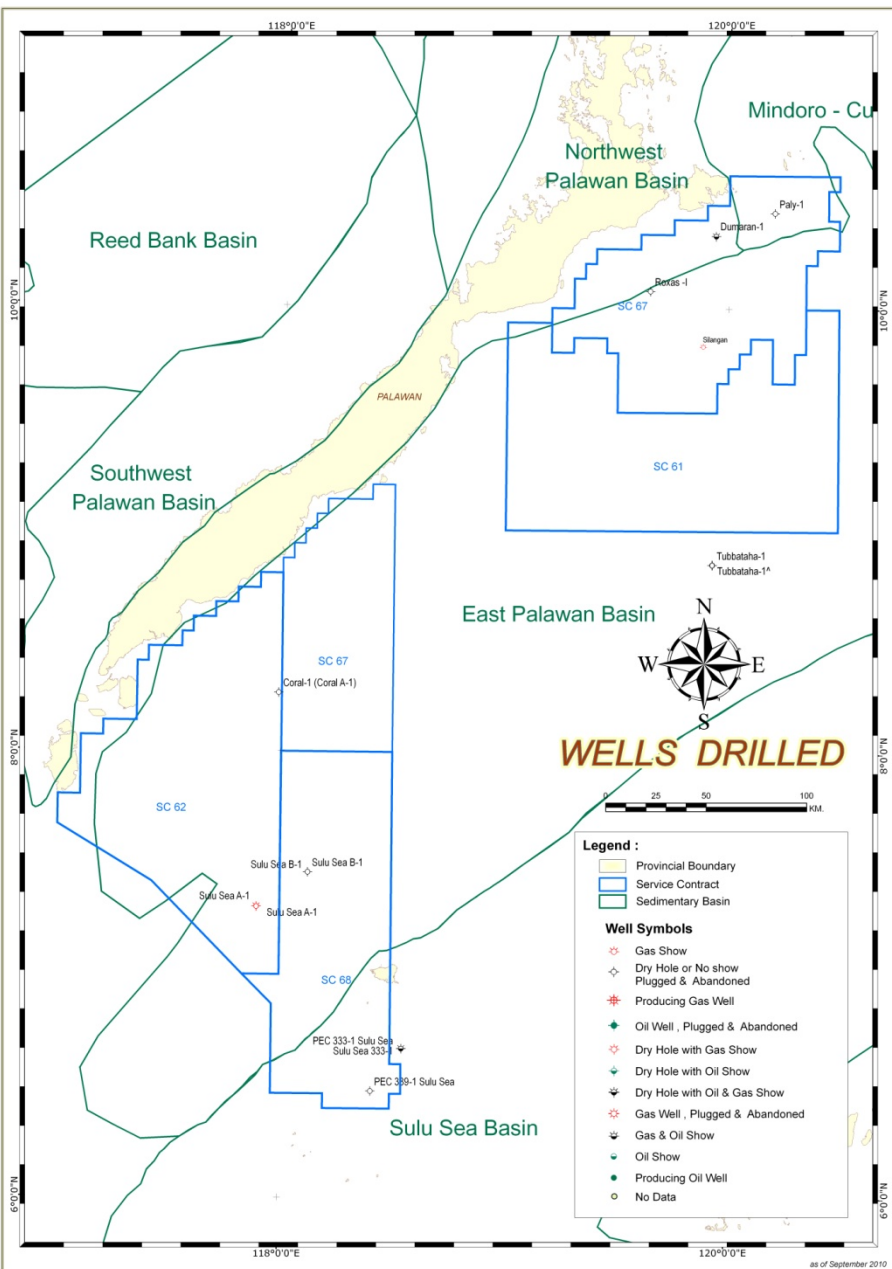
- 2D Seismic  
- 13,030.40 ln-km

- 3D Seismic  
- 499.24 sq-km

(Acquired last Aug. 2007 SC - 60)



# Wells Drilled – East Palawan Basin



Well Name	Year Drilled	Depth (feet)	Results
1 Tubbataha-1	1957	1,484	Dry
2 Sulu Sea A-1	1973	8,586	Gas shows
3 Sulu Sea B-1	1973	7,287	Dry
4 Coral-1	1975	10,047	Dry
5 Roxas-1	1979	6,633	Dry
6 Dumaran-1	1979	6,850	Oil & gas shows
7 Paly-1	1981	6,883	Dry
8 Silangan-1	July 2010	8,842	Dry





# HYDROCARBON POTENTIAL

## East Palawan Basin

- Total resources:
  - Oil – 116 million barrels
  - Gas - 279 billion cubic feet





**Maraming Salamat Po!!!  
( Thank you very much!!!)**

