



# Using meta-data system in Pilot Project

---

Chen FangLi

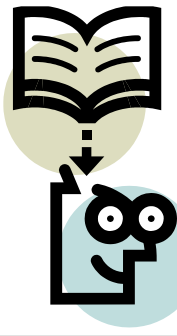
PEPRIS OF SINOPEC



# Agenda

---

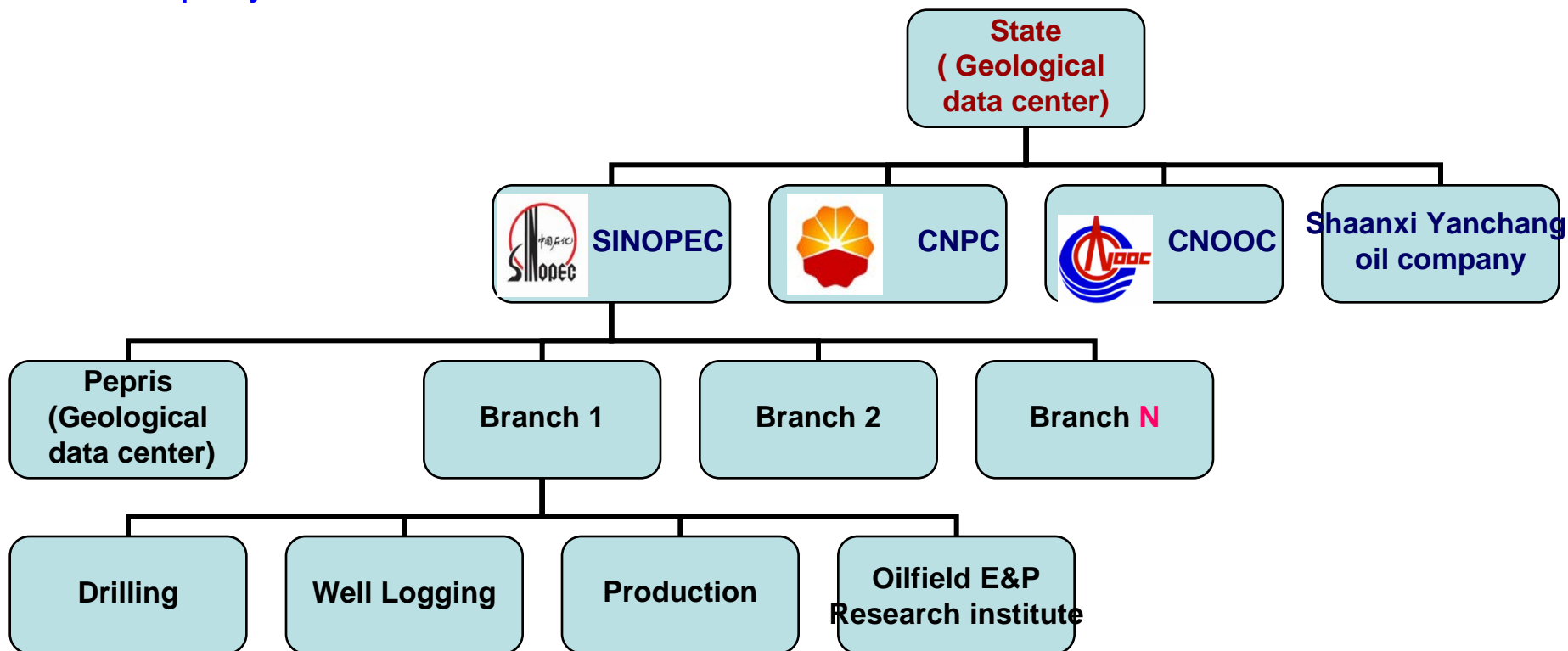
- Data management strategy
- Plan in pilot area
- how to use the meta-data system in pilot area





# Organization

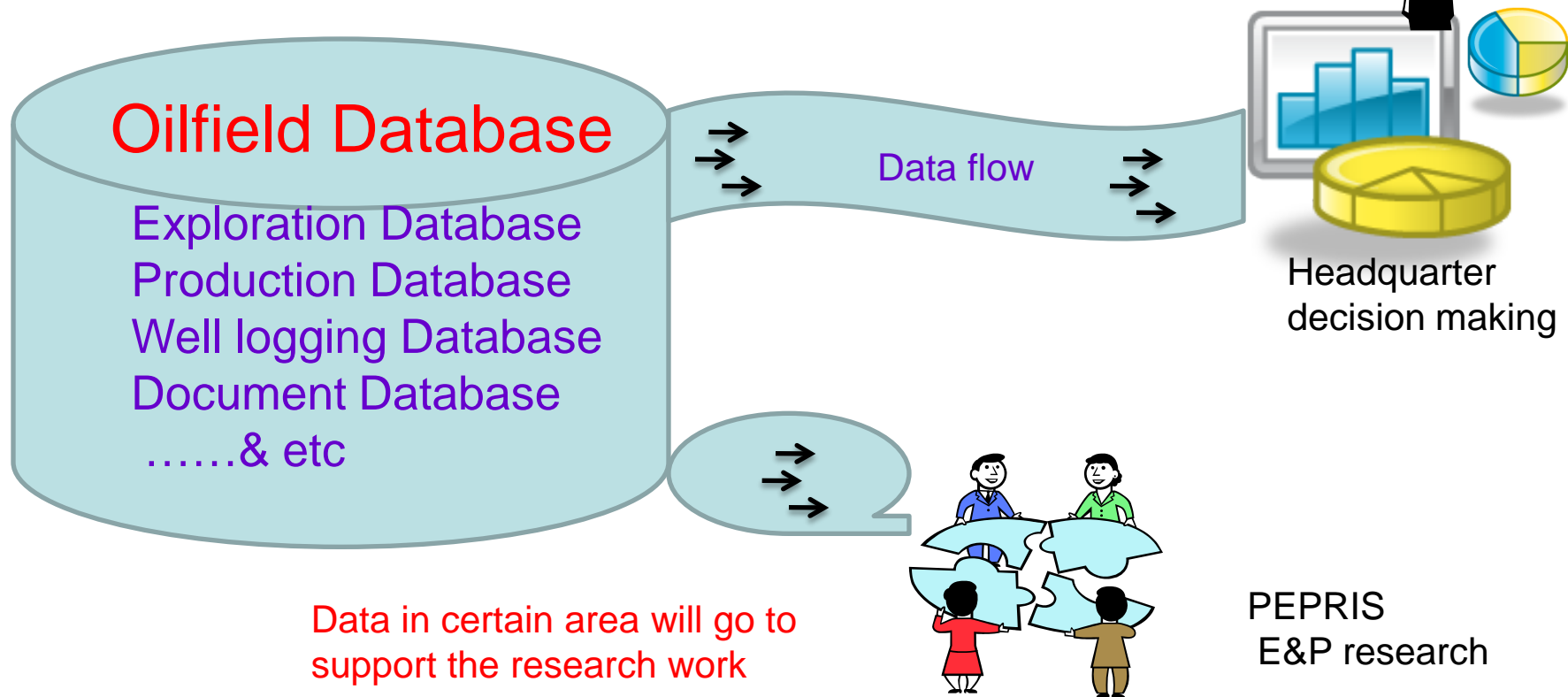
According to the laws and regulations, the main four oil and gas companies approved by the State Council to explore and mine oil and gas in China are CNPC (PetroChina), SINOPEC, CNOOC and Shaanxi Yanchang oil company.





# SINOPEC Data Resources

In the past 20 years, the headquarter invested and organized the development and maintenance of E&P database construction in every oilfield.





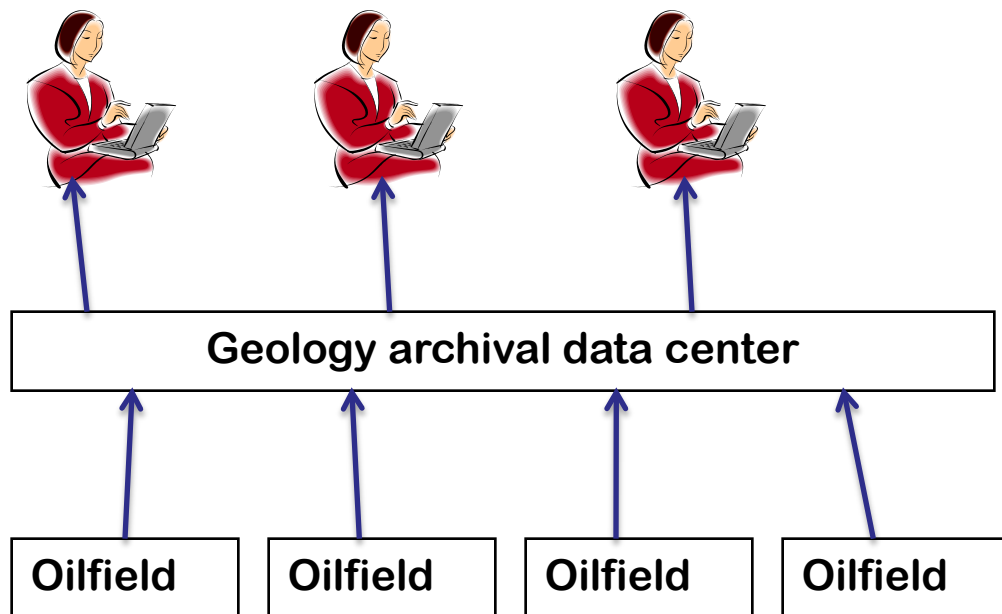
# Archival Data Management

Archival Data

GeoAsset  
Archival DB

Borrow & Retrieve

- (1) Register the catalog and meta-data into GeoAsset
- (2) scan paper to make digital file
- (3) Serve data for the whole company

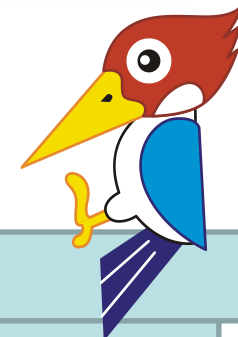




# Plan in pilot area

## (1) Test with Coal bed methane E&P meta-data

- ✓ Coal bed Gas Drilling Engineering Data
- ✓ Coal bed Gas Drilling geological Data
- ✓ Coal bed Gas well Logging data
- ✓ Coal bed Gas experiment analysis data
- ✓ Coal bed Gas testing Engineering Data
- ✓ Coal bed Gas resource evaluate Data
- ✓ Coal bed Gas Document Data



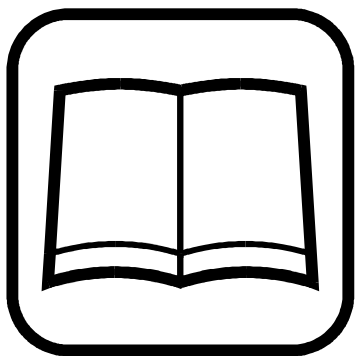
Why we choose Coal bed methane  
? Start to do some work in this area  
? Try to use meta-data system in non-normal  
energy resource management area.



# Plan pilot area

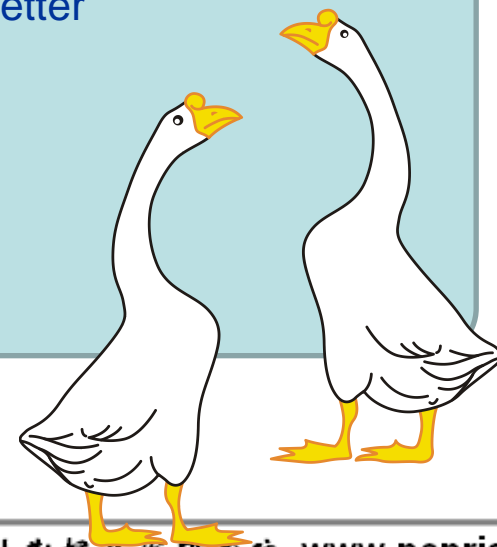
## (2) Update archival meta-data standard

SINOPEC meta-data standard  
for Archival catalog data.



How to use CCOP meta-data in Archival Data center?

- Compare the CCOP meta-data standard
- make SINOPEC standard better





# Plan pilot area

---

## (3) Load some public GIS meta-data

### Geographic map

- Layers: river, road, administration boundary, contour line
- Scale: one to two-hundred thousands
- 1:200000, 1:250000, 1:1000000, 1:2500000

### Geological

- Layers: geological structure, fault zone
- Scale: one to two-hundred thousands
- 1:200000, 1:250000, 1:1000000, 1:2500000





# how to use the meta-data system in pilot area

---

- Analyze the data fields, match every item to the CCOP meta data standard
- Arrange the meta-data to an excel file ,load them into the meta-data system.



# Experience of new meta data system

---

- Data loading
  - it is convenient to input meta-data into this system
  - Meta-data from one country in one area has repeat field value, like the contact information, we only need to input data in one record , other records will inherit the information. this save lot of time.

- Data loading: new area
  - Add some items to the list box
    - Data representation type (seismic acquisition, data package, drilling core)
  - Keep improving the solution

- This system helps us to share the meta-data ,and give us chance to know about each other. To learn from each other.
- With the support from member country, I hope the meta-data system will help us in bigger area.



Thank you