

Feedback for GIMS

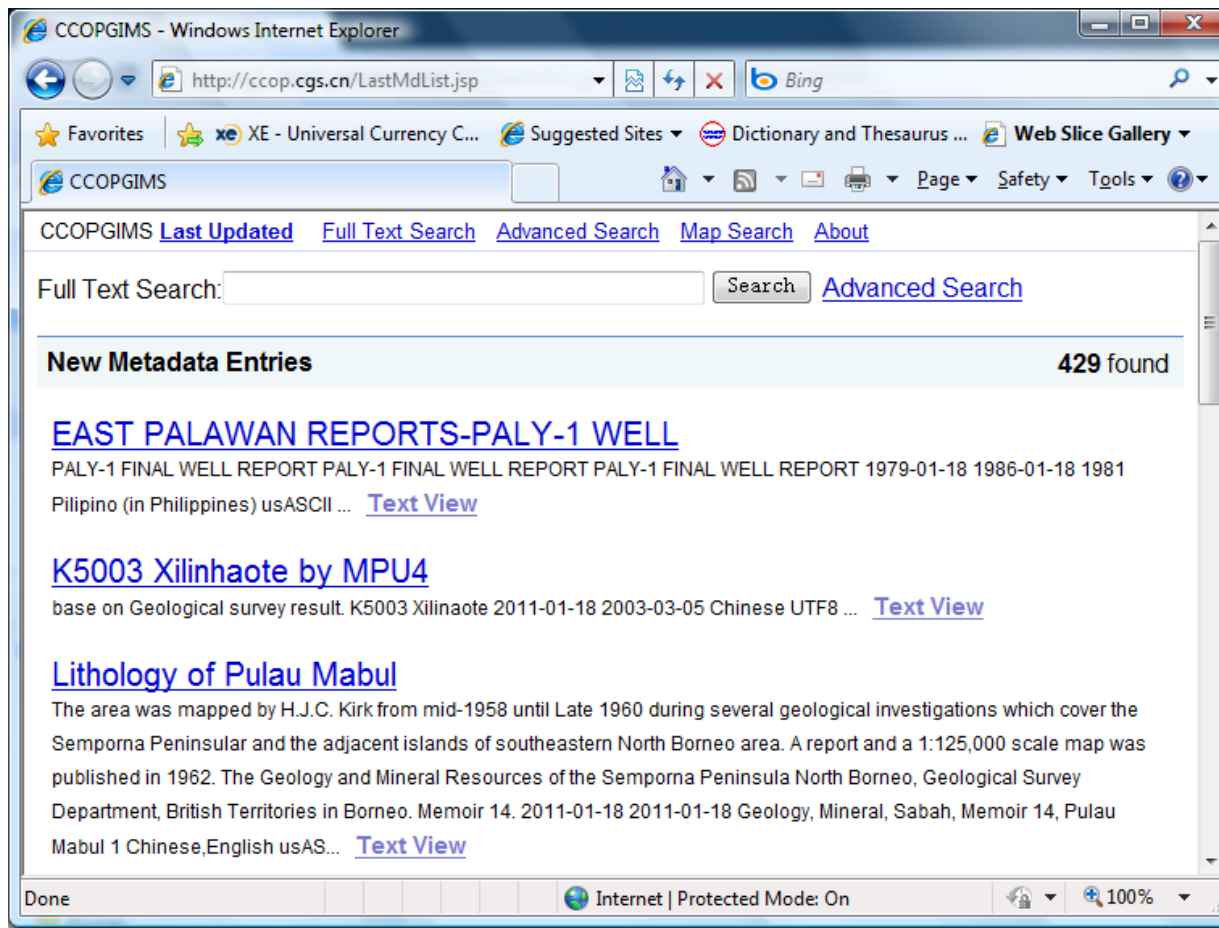
EPPM-P3 Workshop/Training

January 2011, Kuala Lumpur

Errors Encountered

1. Data Publish/Unpublish

- After data manager unpublished data already published, GIMS still remains to display in the list for general users (outside the admin program).



Errors Encountered

2. MD_Distribution

- At first add, DistributorContact does not appear.

http://ccop.cgs.cn/admin/index.jsp - Windows Internet Explorer

http://ccop.cgs.cn/admin/index.jsp

Marivic [Logout] [Modify Password] [Home Page]

Management platform

- Metadata
- Upload data
- Add metadata**
- Edit metadata
- Publish metadata
- Batch edit data
- Download metadata
- Submit Metadata
- Return Metadata
- Help
- Data Manager
- Add New Data manager
- View | Modify | Delete data

Metadata		Edit
metadataTitle:	test-MPU	Edit
dateStamp:	2011-01-19	Edit
MD_Identification:		Add
MD_Constraint:		Add
MD_Distribution		Add
ResponsibleParty		Add

AddMD_Distribution Element/Entities with * are mandatory

onlineResource:

mediaName: cdRom *

dataFormatName: *

Submit Reset Cancel

Internet | Protected Mode: On 100%

Errors Encountered

3. Spelling Correction

- Add 'n' to **dowload**, making it **download**.

Management platform

Search

ID: Metadata Title: Full Text Search: Show Number: 15

Search

Select	ID	Metadata Title	Create Time
<input type="checkbox"/>	8310	test-MPU	2011-01-19
<input type="checkbox"/>	8308	K5003 Xilinhaote by MPU4	2010-07-20
<input type="checkbox"/>	8305	K5003 Xilinhaote by MPU3	2010-07-20

Download metadata

Errors Encountered

4. MD_metadata.contact

- In GIMS admin program, change **ResponsibleParty** to **contact**, to be consistent with the standard.

The screenshot shows the GIMS admin program interface. The browser address bar displays <http://ccop.cgs.cn/admin/index.jsp>. The user is logged in as Marivic. The left sidebar contains a 'Management platform' menu with options: Metadata, Upload data, Add metadata, Edit metadata, Publish metadata, Batch edit data, Download metadata, Submit Metadata, Return Metadata, Help, Data Manager, Add New Data manager, View | Modify | Delete data Manager, Field, and Field List. The main content area is titled 'Metadata Edit' and contains the following fields:

metadataTitle:	xxx	Edit
dateStamp:	2011-01-19	Edit
MD_Identification:		Add
MD_Constraint:		Add
MD_Distribution:	delete	
	onlineResource:	Edit
	distributorContact:	Add
	mediaName:	cdRom Edit
	dataFormatName:	xx Edit
ResponsibleParty:		Add

The 'ResponsibleParty:' field is circled in red. At the bottom right of the main content area, there is an 'Edit' button. The browser's status bar at the bottom shows 'Internet | Protected Mode: On' and a zoom level of 100%.

Errors Encountered

5. Publishing Data

- During publishing data, no error message is displayed when there is a problem (ie mandatory items are not filled). Only with Chinese computers that error message is displayed (Dr Zhang's and Ms Chen's)

6. Country Selection List

- No 'Malaysia'. Already fixed in the CGS server, but not yet in CCOP server.

7. MD_Constraint

- AccessConstraint is optional in the standard, but in GIMS it's mandatory.

8. Upload Metadata

- Upload Metadata by Directory does not work with IE8 & Google Chrome. (To check whether GIMS work under Mozilla Firefox)

9. Class ResponsibleParty

- Update standard => **Country** condition to Mandatory, the same as in GIMS.

Suggestions

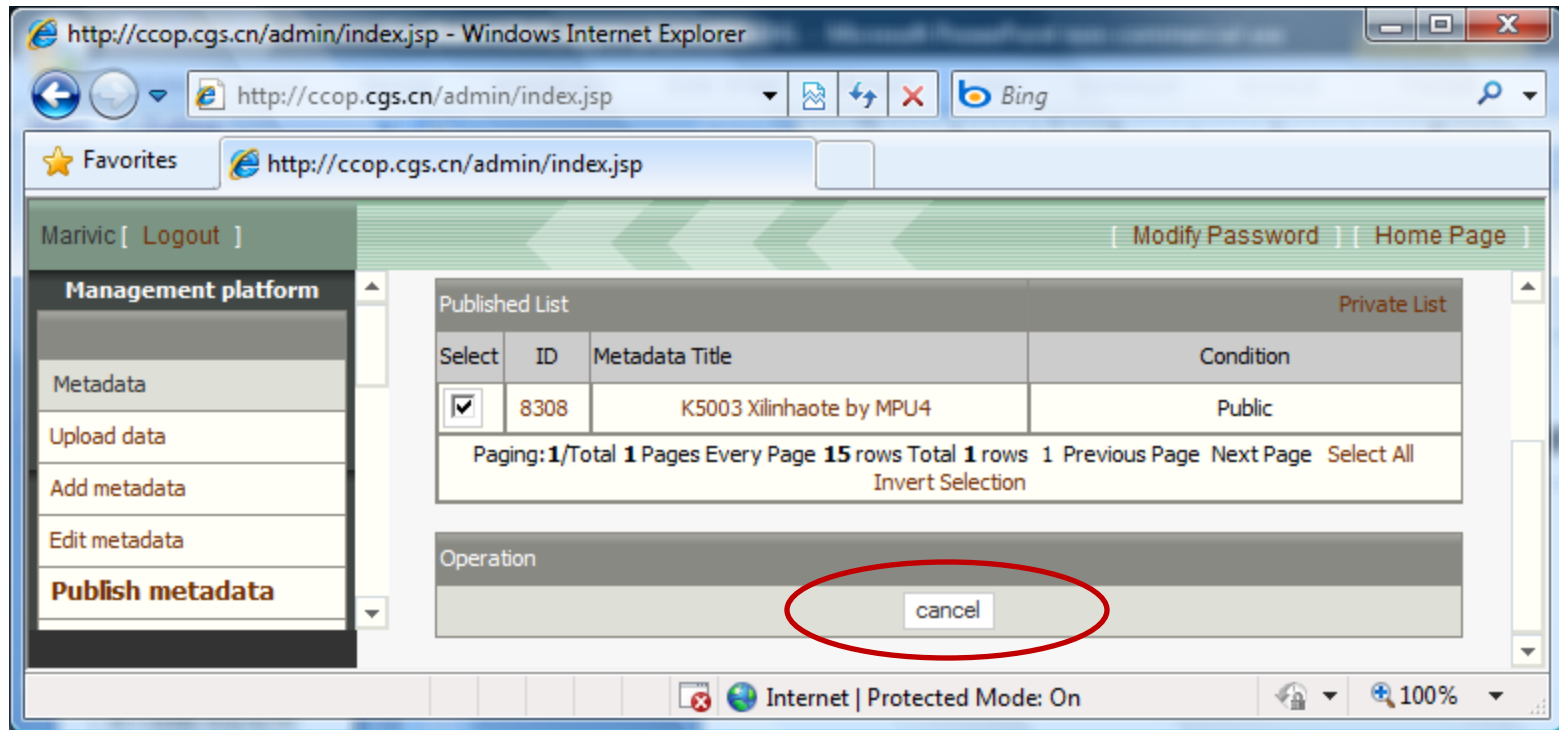
- Terms use
 - Use **publish** instead of **public** for publish operation.

The screenshot shows a web browser window displaying the administration interface of a metadata management system. The browser address bar shows the URL `http://ccop.cgs.cn/admin/index.jsp`. The page title is "Marivic [Logout]". The interface includes a sidebar menu with options like "Management platform", "Metadata", "Upload data", "Add metadata", "Edit metadata", "Publish metadata", "Batch edit data", and "Download metadata". The main content area displays a table of metadata records with columns for checkboxes, IDs, titles, and access types. The table contains five rows of data. Below the table, there is a pagination control showing "Paging: 1/Total 1 Pages Every Page 15 rows Total 7 rows" and buttons for "Previous Page", "Next Page", "Select All", and "Invert Selection". At the bottom of the table, there is an "Operation" section with a button labeled "public", which is circled in red. The browser's status bar at the bottom indicates "Internet | Protected Mode: On" and a zoom level of "100%".

<input type="checkbox"/>	ID	Title	Access Type
<input type="checkbox"/>	8304	K5003 Xilinhaote by MPU2	Private
<input type="checkbox"/>	8275	xx	Private
<input type="checkbox"/>	8258	K5003 Xilinhaote by MPU2	Private
<input type="checkbox"/>	3266	Geological Map in East and Southeast Asia	Private
<input type="checkbox"/>	3066	K5003 Xilinhaote by MPU	Private

Suggestions

- Terms use
 - Use **unpublish** instead of **cancel** for unpublish operation.



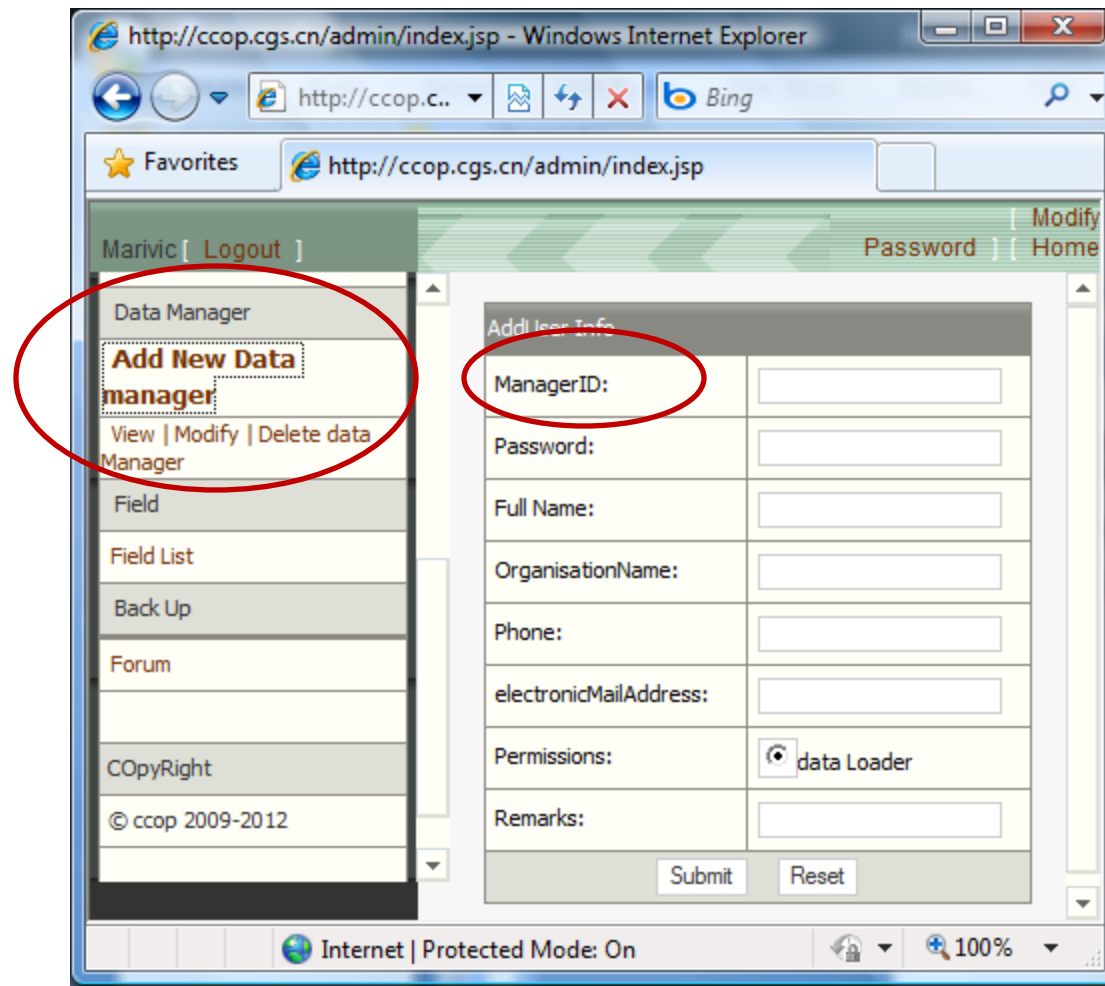
Suggestions

- Terms use
 - Column name for 'data loaders / data managers' change from **data manager** to **data loaders**.

Suggestions

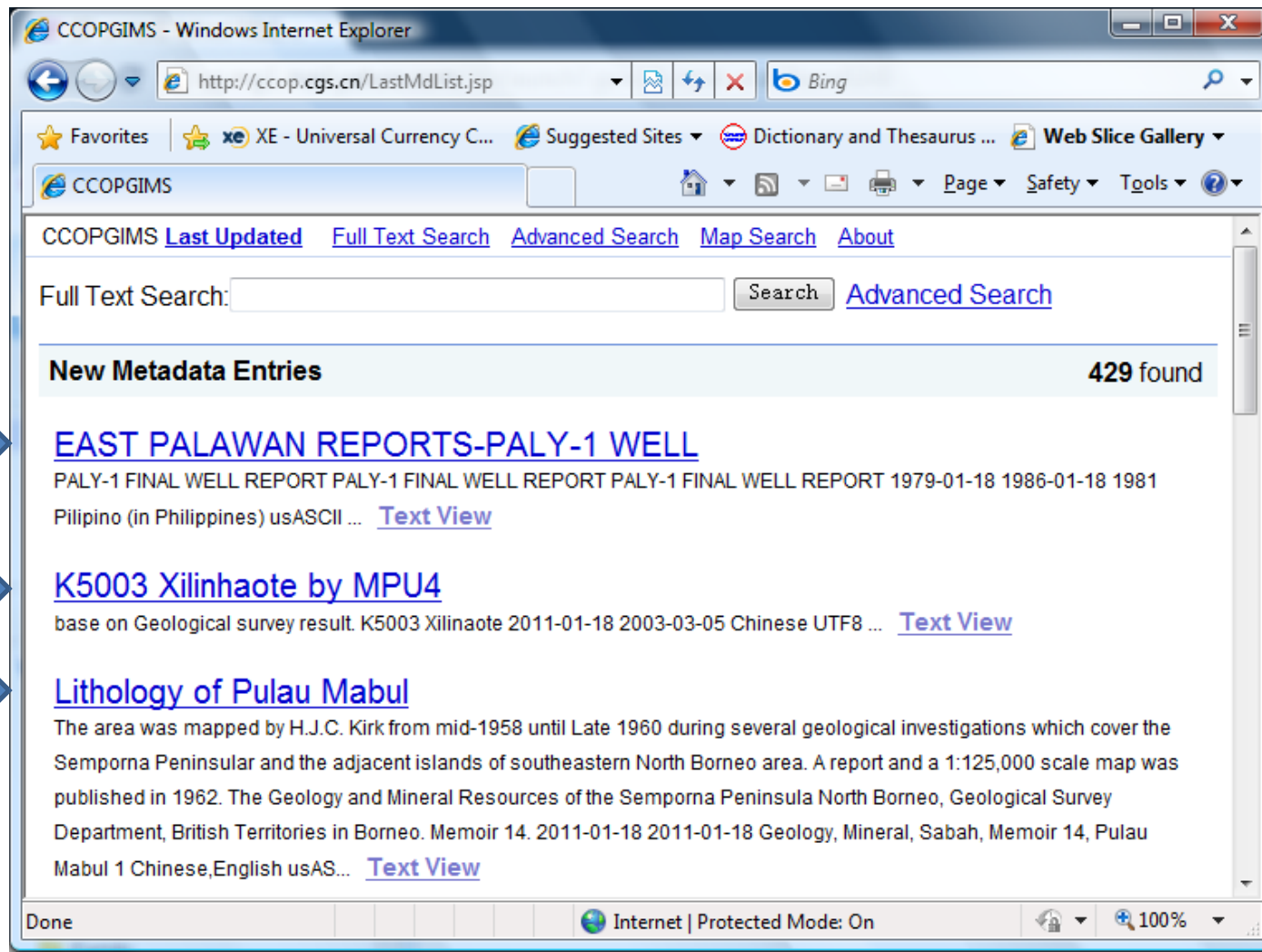
- Terms use
 - Under Management Platform menu, change term **Data Manager** to **User**
- Add field **Country** for User table.
- Users list can be sorted by Country.

Note: 3 kinds of users: admin, data manager & data loader



Suggestions

- Display of metadata list to the general public.
 - By MD_Identification.**title** instead of **metadataTitle**



CCOPGIMS - Windows Internet Explorer

http://ccop.cgs.cn/LastMdList.jsp

CCOPGIMS

CCOPGIMS [Last Updated](#) [Full Text Search](#) [Advanced Search](#) [Map Search](#) [About](#)

Full Text Search: [Advanced Search](#)

New Metadata Entries 429 found

[EAST PALAWAN REPORTS-PALY-1 WELL](#)
PALY-1 FINAL WELL REPORT PALY-1 FINAL WELL REPORT PALY-1 FINAL WELL REPORT 1979-01-18 1986-01-18 1981
Pilipino (in Philippines) usASCII ... [Text View](#)

[K5003 Xilinhaote by MPU4](#)
base on Geological survey result. K5003 Xilinaote 2011-01-18 2003-03-05 Chinese UTF8 ... [Text View](#)

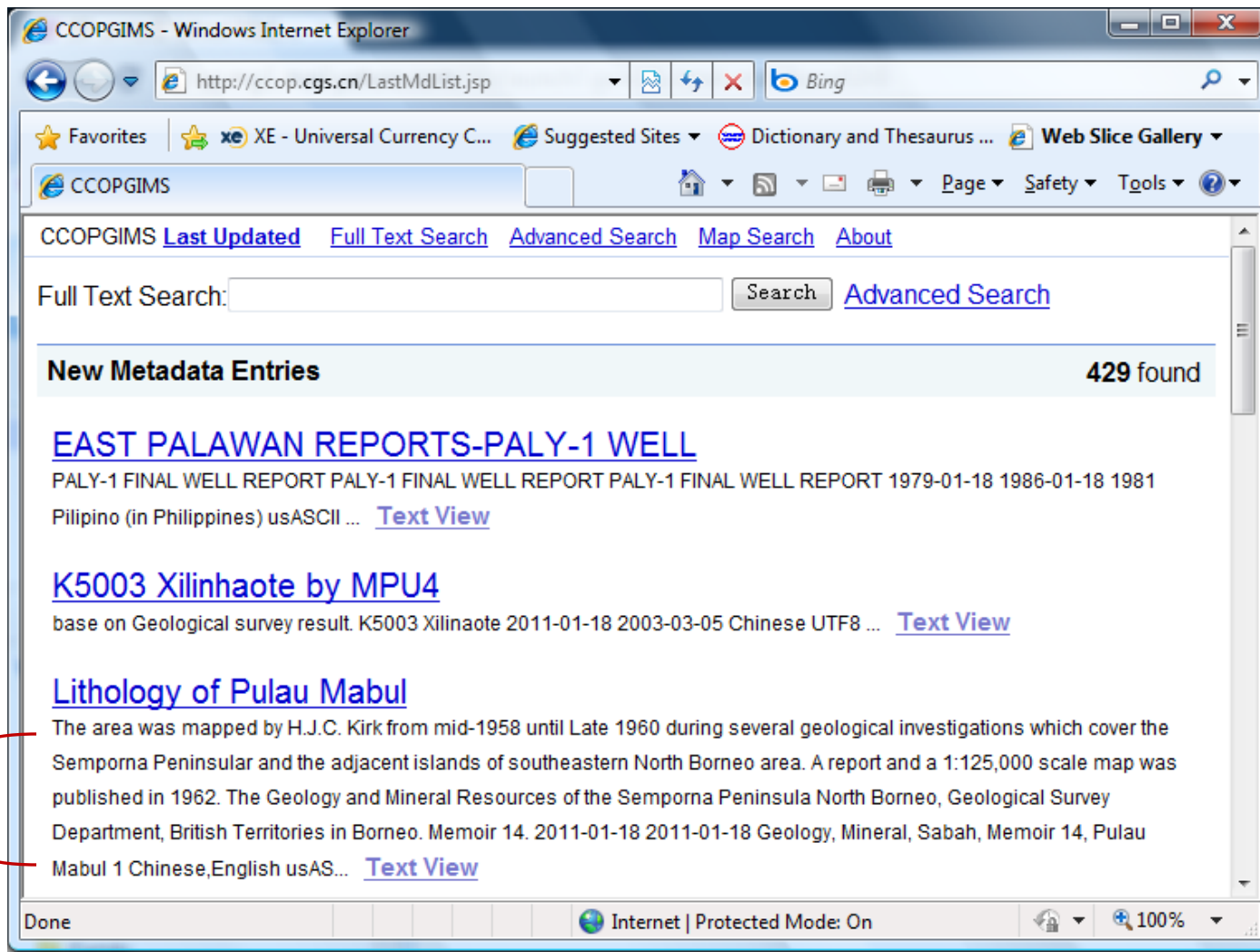
[Lithology of Pulau Mabul](#)
The area was mapped by H.J.C. Kirk from mid-1958 until Late 1960 during several geological investigations which cover the Semporna Peninsular and the adjacent islands of southeastern North Borneo area. A report and a 1:125,000 scale map was published in 1962. The Geology and Mineral Resources of the Semporna Peninsula North Borneo, Geological Survey Department, British Territories in Borneo. Memoir 14. 2011-01-18 2011-01-18 Geology, Mineral, Sabah, Memoir 14, Pulau Mabul 1 Chinese,English usAS... [Text View](#)

Done Internet | Protected Mode: On 100%

- Metadata title (1 metadata title for 1 data)
 - follow a standard – optional
 - Countrycode
 - Basin
 - Type of data
 - number

Suggestions

- Display of metadata list to the general public.
 - Display only MD_Identification.**abstract** instead of all items under MD_Identification



CCOPGIMS - Windows Internet Explorer

http://ccop.cgs.cn/LastMdList.jsp

CCOPGIMS

CCOPGIMS [Last Updated](#) [Full Text Search](#) [Advanced Search](#) [Map Search](#) [About](#)

Full Text Search: [Advanced Search](#)

New Metadata Entries 429 found

[EAST PALAWAN REPORTS-PALY-1 WELL](#)
PALY-1 FINAL WELL REPORT PALY-1 FINAL WELL REPORT PALY-1 FINAL WELL REPORT 1979-01-18 1986-01-18 1981
Pilipino (in Philippines) usASCII ... [Text View](#)

[K5003 Xilinhaote by MPU4](#)
base on Geological survey result. K5003 Xilinaote 2011-01-18 2003-03-05 Chinese UTF8 ... [Text View](#)

[Lithology of Pulau Mabul](#)
The area was mapped by H.J.C. Kirk from mid-1958 until Late 1960 during several geological investigations which cover the Semporna Peninsular and the adjacent islands of southeastern North Borneo area. A report and a 1:125,000 scale map was published in 1962. The Geology and Mineral Resources of the Semporna Peninsula North Borneo, Geological Survey Department, British Territories in Borneo. Memoir 14. 2011-01-18 2011-01-18 Geology, Mineral, Sabah, Memoir 14, Pulau Mabul 1 Chinese,English usAS... [Text View](#)

Done Internet | Protected Mode: On 100%

Suggestions

- Error-checking of metadata information
 - Right now, it's done before publishing in GIMS. Will have to find ways to do the error checking using the offline editor.
- Add Metadata Entry/Editor tool developed by PETROVIETNAM to GIMS admin program for download.
- Conditional elements indicate with **(C)**.
- Backup in GIMS – to do backup of all data in one time.