



EPPM Program Update

as of March 2010

Simplicio P. Caluyong

CCOP Technical Secretariat

P3W3- Pattaya, Thailand

24 March 2010



Coordinating Committee for Geoscience
Programmes in East and Southeast Asia (CCOP)

Contents

- ◆ EPPM Program- profile
- ◆ Technical Projects
- ◆ Project 3 (P3)
- ◆ Way forward



EPPM Program

◆ CCOP-Norway Cooperation Program for Enhancing Public Petroleum Management of the CCOP Member Countries (EPPM)

- The goal is to create the highest possible value for society from petroleum resources in order to improve the quality of life of the people in the CCOP Member Countries.



EPPM Program

- ◆ Agreement between Norway & CCOP signed on 10 July 2008
- ◆ 4-year, July 2008- June 2012
- ◆ Budget: NOK15 Million
- ◆ Implementing agency: CCOP TS
- ◆ Cooperating agency: NPD & PETRAD
- ◆ Beneficiaries: CCOP Member Countries



EPPM Program

◆ 3 Projects

- **(P1) Petroleum Resource Management with focus on Natural Gas**
- **(P2) Natural Gas Field Development and Environmental Issues**
- **(P3) Metadata on Natural Gas Resources in the CCOP Region**



EPPM Program

◆ Outputs

- Trained and more knowledgeable professional staff in the MC
- Working Group and Expert Group formed
- Project Report
- Improved Natural gas database that is easily accessible
- Project website for information, reporting, knowledge sharing and preservation
- Networking and cooperation among MC is further strengthened



EPPM Strategic Focus

- ◆ **Natural Gas development & Environmental issues**
- ◆ **Practice of Knowledge Management**



P1- Petroleum Resource Management with focus on Natural Gas

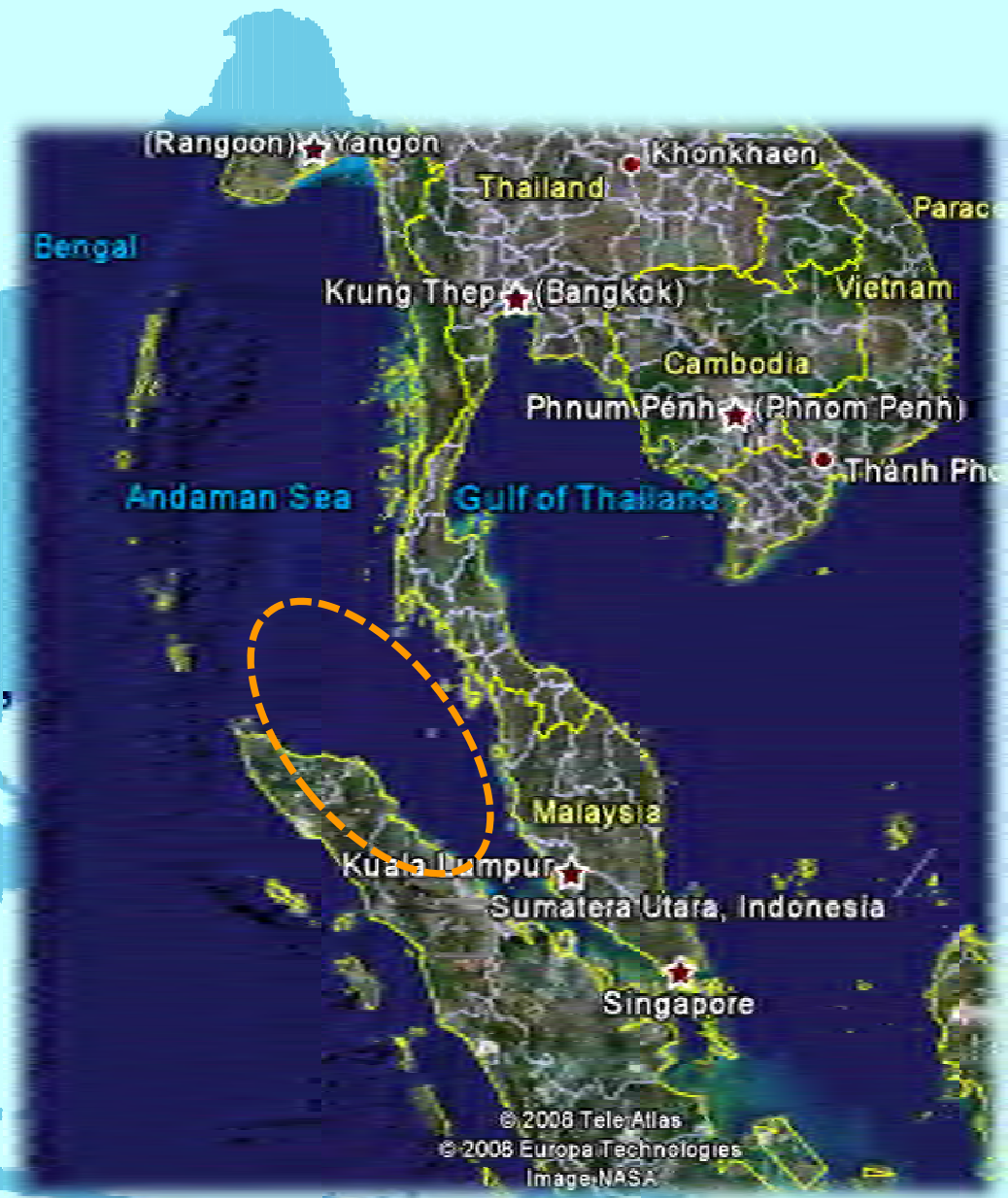
- ◆ **Objectives:** To enhance the capability and capacity of MC in assessment of the undiscovered petroleum resources with focus on natural gas
- ◆ **Implementation thru cross-border case study**
 - Supported by 6 workshops, field works & trainings



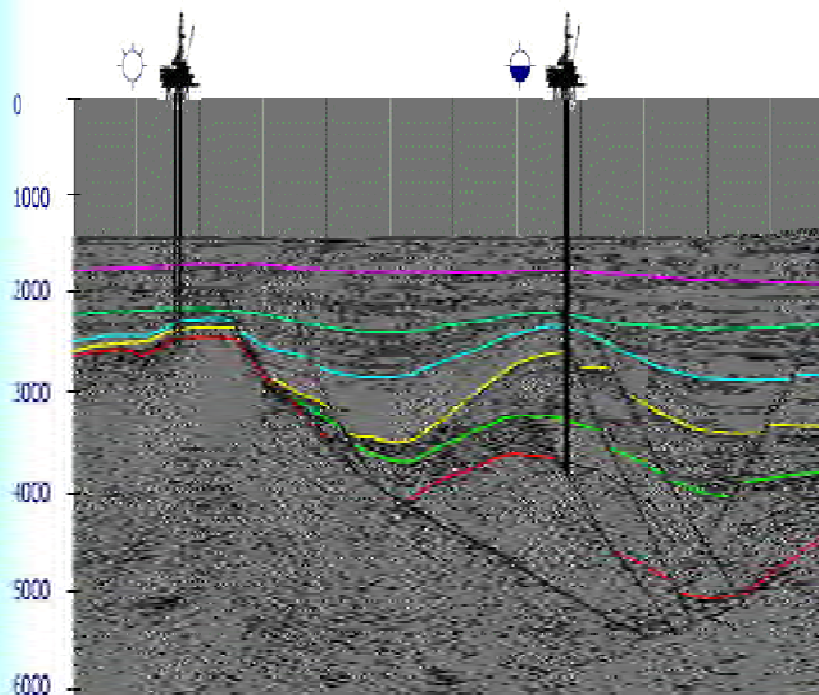
P1

◆ Cross-border Case study area: **North Sumatra – Mergui basin**

- Shared by Thailand,
Malaysia &
Indonesia



Seismic Cross-Section of the Mergui Basin



Stratigraphy of the Mergui Basin

AGE	Relative Changes of sea level (EXXON 1979) + present sea level -	NORTH SUMATRA BASIN	MERGUI BASIN
Holocene			
Pleistocene		JULU RAYEU SEURULA	TAKUA PA
Pliocene	M L		
	E		
Miocene	L	KEUTAPANG	THALANG
	Σ	BAONG	TRANG
		PEUTU	SURIN
	E	ARUN BELUMAT	KANTANG
		BAMPD	YALA RANONG
Oligocene	M L	PAKADAT	
	E		

~~~~~ major unconformity  
 - - - - - minor unconformity



# **P2 -Natural Gas Field Development and Environmental Issues**

- ◆ **Objectives:** To enhance the capacity and capability of MC in natural gas development and clean development mechanism & environmental issues
- ◆ **Implementation:** series of 6 workshops
  - China (SINOPEC) has offered their Puguang gas field for case study on challenges to gas production/development (CO<sub>2</sub> / H<sub>2</sub>S & HP /HT)



# **P2 -Natural Gas Field Development and Environmental Issues**

## **◆ Others topics**

- **CO2- alternative use, IOR & EOR technologies**
- **Gas hydrates**
- **Gas flaring & Clean development mechanism**
- **Carbon capture & storage (CCS)**
  - **Potential in CCOP**
  - **CCS geological risks, appropriate technologies for assessment & monitoring**



# **P3 - Metadata on Natural Gas Resources in the CCOP Region**

- ◆ **Objectives:** To set up an easily accessible metadata on natural gas resources of the CCOP Countries for knowledge sharing & preservation on natural gas resource exploration, exploitation and environmental impact mitigation



# **P3 - Metadata on Natural Gas Resources in the CCOP Region**

## **◆ Implementation**

### **- Series of workshops on**

- ☞ Requirements Analysis, metadata contents & definitions referring to international standard(s)**
- ☞ Database structure design & software development**
- ☞ Developing capacities for software usage**
- ☞ Population & validation of data base**

## **◆ Will collaborate with existing metadata work group in CCOP**





# Building on Lessons Learned

- ◆ **Workshops** supporting the case studies
- ◆ **Cross-border** studies
- ◆ **workgroups** & expert groups
- ◆ **Website** for knowledge storage, information dissemination, networking, publication & promotion





# EPPM Program – coordination setup



# Coordination set up

## ◆ WorkGroups – established in the MC

- multi-disciplinary, including local experts
- would follow the progress of the Project activities
- Would secure the data required for the technical activities
- **A facility for the practice of knowledge management – focus on knowledge sharing & use**
- **Led by a Group Leader**



# Coordination set up

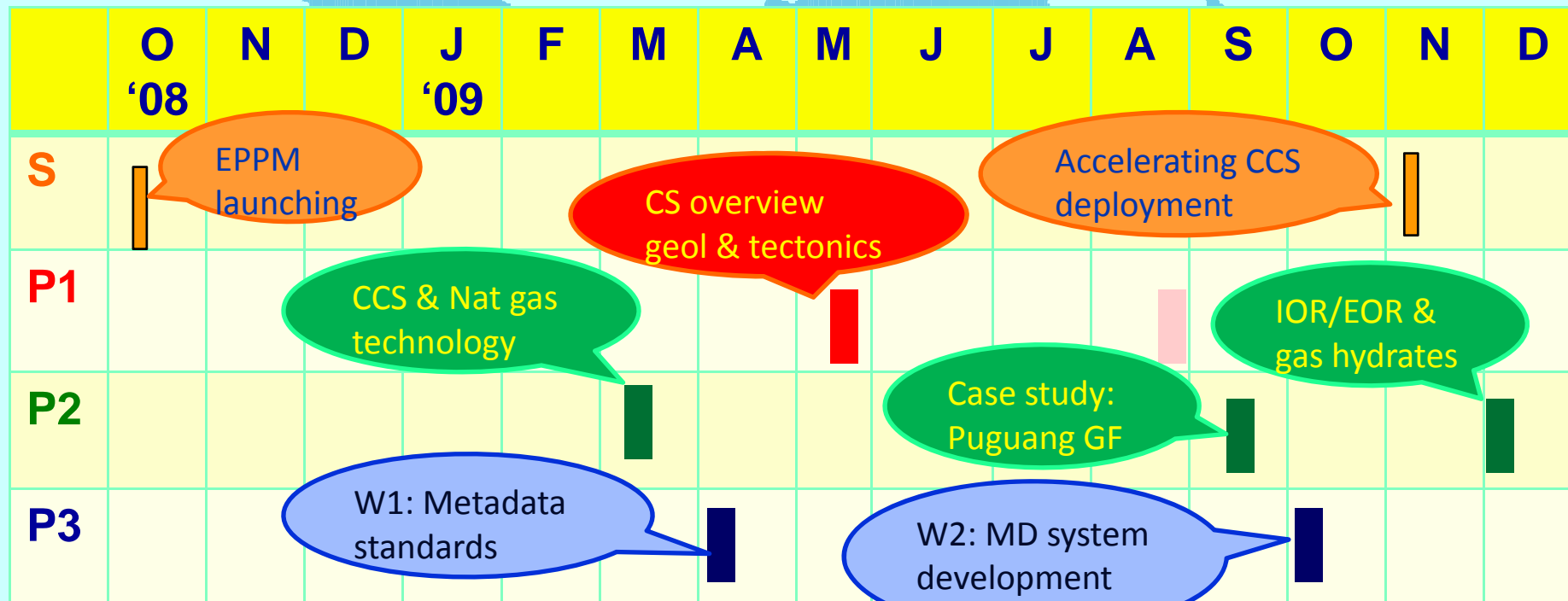
## ◆ National Coordinators

- **Main contact person** in the MC- to work closely with the Proj Coordinator in the TS
- Can be one of the Workgroup Leader
- Responsible for the management of the WorkGroups & the facilitation of knowledge transfer/sharing

## ◆ ASCOPE & other NOC's and academic institutions are invited to participate in the Program



# Accomplishment for 2009



S- Seminars

- postponed to 2Q 2010



| EPPM Activity 2009 | Participants  |             |              |
|--------------------|---------------|-------------|--------------|
|                    | <i>Female</i> | <i>Male</i> | <i>Total</i> |
| P2W1- Bali         | 15            | 43          | 58           |
| P1W1 - Krabi       | 4             | 19          | 23           |
| P3W1- Shanghai     | 13            | 22          | 35           |
| P2W2 - Chengdu     | 16            | 31          | 47           |
| P3W2 - Davao       | 18            | 25          | 43           |
| S2 - Bangkok       | 12            | 34          | 46           |
| P2W3 - Danang      | 13            | 34          | 47           |
| <b>total</b>       | <b>91</b>     | <b>208</b>  | <b>299</b>   |
| <b>%</b>           | <b>0.30</b>   | <b>0.70</b> | <b>1.00</b>  |



# P3W1: Workshop on metadata standards & requirement analysis for the CCOP Natural Gas Database Metadata, 1-3 Apr 09, Shanghai, China

- ◆ metadata standards that can be used for the CCOP natural gas metadata-*harmonizing the existing metadata database*
- ◆ 35 participants (*from 10 MC*)
  - Resource persons from Norway & MC





# P3W1

## ◆ Conclusions:

- To develop a simple practical metadata proto-type – to become a template for MC to use
- Metadata system– to be compatible to each country's standards (as possible)
- For the future- TS will be the portal hosting the metadata server- to be easily accessible by the general public





# **EPPM P3W2: Workshop on Metadata System Development, Davao City, Philippines, 7-9 October 2009**



- ◆ To develop the metadata system for CCOP on natural gas resources
- ◆ 43 participants (9 Member Countries)



Coordinating Committee for Geoscience  
Programmes in East and Southeast Asia (CCOP)

## ◆ Conclusions

- agreed to use the CCOP Geoscience metadata system that is developed by CGS for the EPPM metadata system- with adjustments to accommodate specific items for oil and gas
- The target user (initial stage) would be focus on investors in the upstream & downstream (oil and gas companies) and Government (regulators & research agencies)





- The sub-category for Oil and Sector in the metadata system and definitions are already proposed and would cover items such as: acreage, fiscal system, geology, geophysics, exploration, reservoir, production, and environment
- The next workshop would involve training for the users of the CCOP geoscience metadata system with work flow analysis and evaluation of the system



# **P3W3: Metadata system users training & workshop**

- ◆ **To train the users from the CCOP Member Countries on the new CCOP metadata system that is developed by the China Geological Survey (CGS)**
  - **Review of the CCOP Metadata system – its purpose & contents**
  - **Training on the usage of the system**
  - **Testing and evaluation of the system**
  - **Group discussion/presentations**



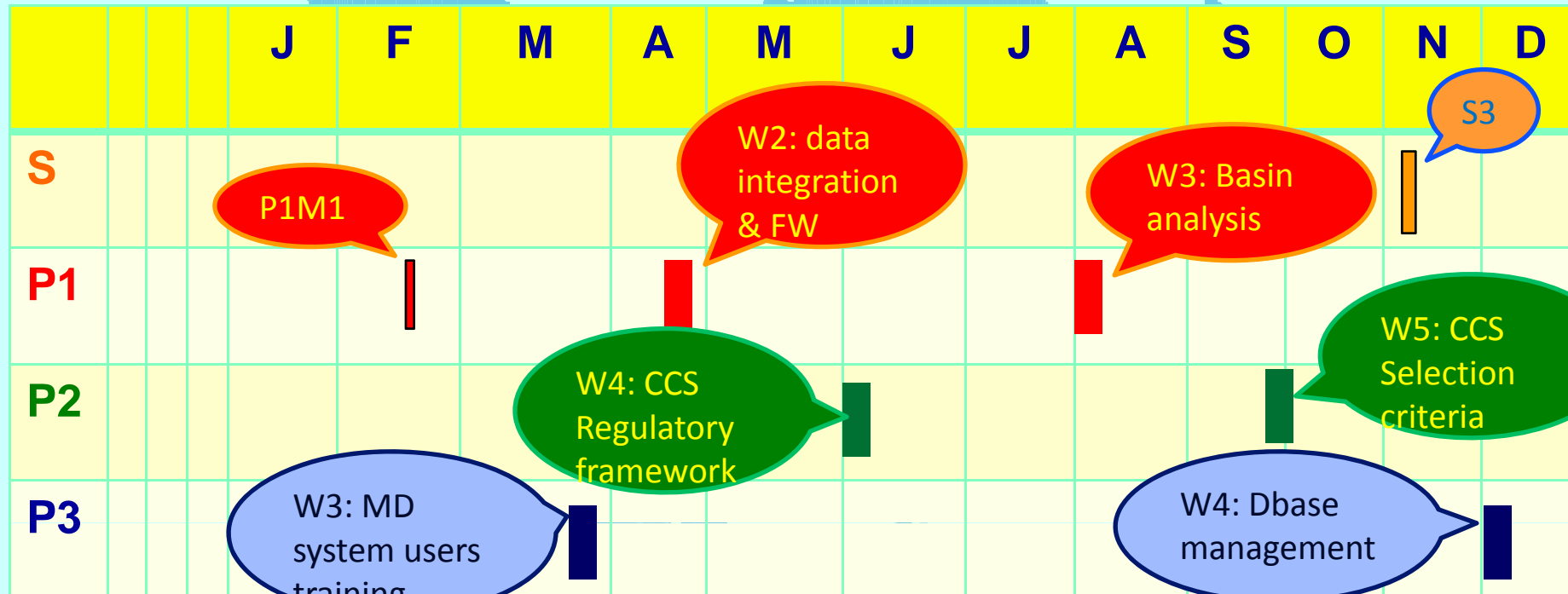
A light blue map of East and Southeast Asia is centered on the page. The map shows the outlines of China, Korea, Japan, and the Southeast Asian archipelago. The text 'Way Forward' is overlaid on the map in a large, bold, dark blue font.

# Way Forward



**Coordinating Committee for Geoscience  
Programmes in East and Southeast Asia (CCOP)**

# Work plan for 2010



## S- EPPM Seminar 3



# 2010 Workshop contents

## ◆ P1

**W2:** data integration & fieldwork

**W3:** Basin analysis

## ◆ P2

**W4:** Regulatory framework for CCS (incl HSE), CDM & gas flaring

**W5:** Mapping of CCS potential reservoir and selection criteria

## ◆ P3

**W3:** metadata proto-type deployment & usage training

**W4:** database buildup & management





# P1M1- LEMIGAS, Jakarta



**Coordinating Committee for Geoscience  
Programmes in East and Southeast Asia (CCOP)**

A light blue map of East and Southeast Asia is centered on the slide. The text is overlaid on this map.

**THANK YOU!**

**Simplicio P. Caluyong**  
**EPPM Coordinator**  
**[sim@ccop.or.th](mailto:sim@ccop.or.th)**



**Coordinating Committee for Geoscience  
Programmes in East and Southeast Asia (CCOP)**