



EPPM P3W2 Workshop on Metadata System Development 7-9 October 2009, Philippines.

1

Oil & Gas Activity in Cambodia

Presented by :
Ung Phany , Director of Administration
Divison
Phan Vuthy , Geologist
Cambodian National Petroleum Authority





Outline

2

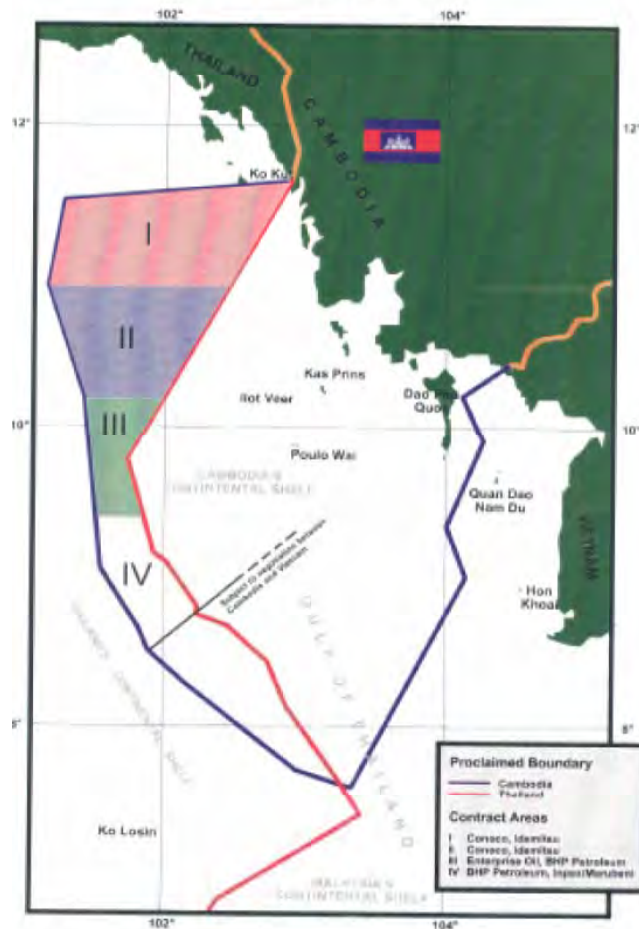
- Background
- Objective
- Projective
- Conclusion



Overlapping Claim Areas With Thailand (OCA)

3

Map of Continental Shelf Claims and Contract Areas I to IV



- Cambodia's Claim 1972
- Thailand's Claim 1973
- Cambodia's PSC Contractors
- Conditional Petroleum Agreement

Overlapping Claims Area (OCA) with Thailand

Cambodia	Thailand
Area I	Blocks 5&6
ConocoPhillips, 66.7%	Chevron, 50%
Idemitsu, 33.3%	Idemitsu, 50%
Area II	Blocks 7,8 &9,
ConocoPhillips, 66.7%	BG, 50%
Idemitsu, 33.3 %	Chevron, 50%

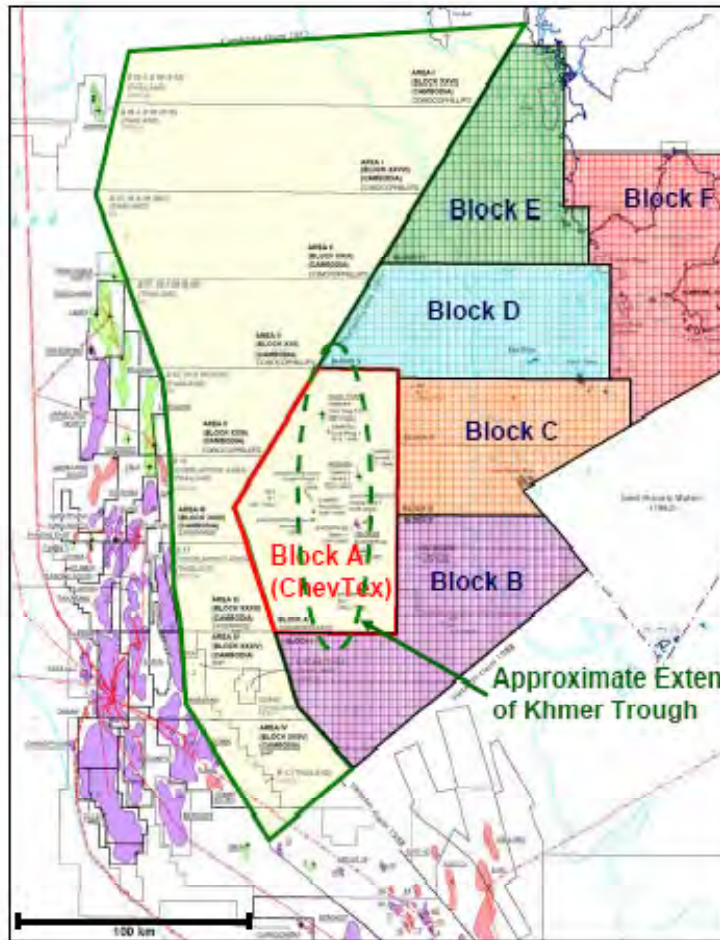
Rebidding & Awarded

- Area III – Awarded to Total
- Area IV – Open Bidding
October 07, 2009



Petroleum Areas and Awarded Blocks

4



Exploration Activities in Offshore :

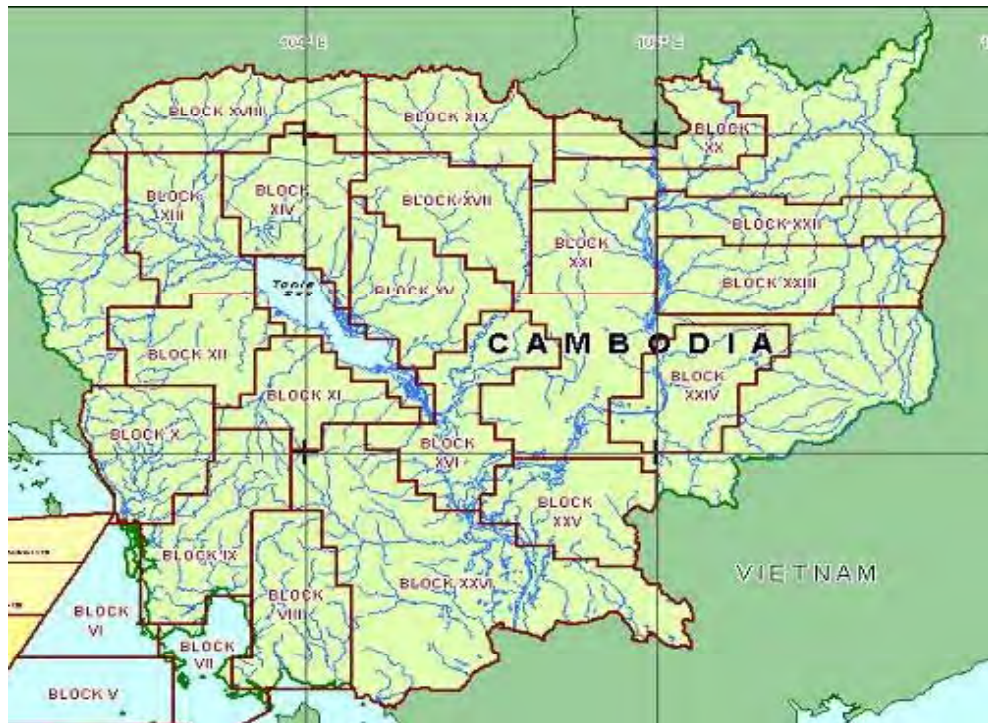
- **Block- A : 15 wells (For 7 years -2002 – 2009)**
 - *Operator by Chevron*
 - *Extension 1 Year*
- **Block- B : 1 well in 2008 (Work Plan Drill 3 wells : 2 + 1 in 2010)**
 - *Operator by PTTEP*
- **Block - C : Polytec 100% Not well ?**
- **Block – D : China Petrotech 100% (Work Plan Drill 5 wells : 3+2 in 2010)**
- **Block – E : Not well ?**
 - *Operator by MEDCO*
- **Block – F : CNOOC - Not well**



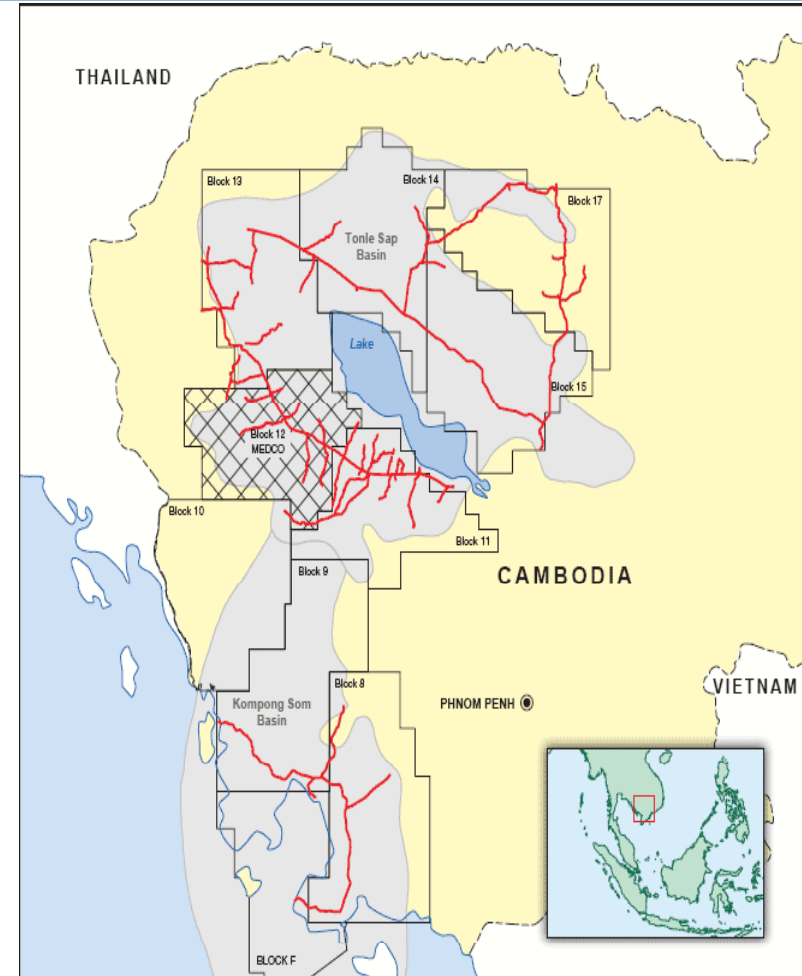
Petroleum Areas and Awarded Blocks

5

Cambodia Onshore Seismic Survey



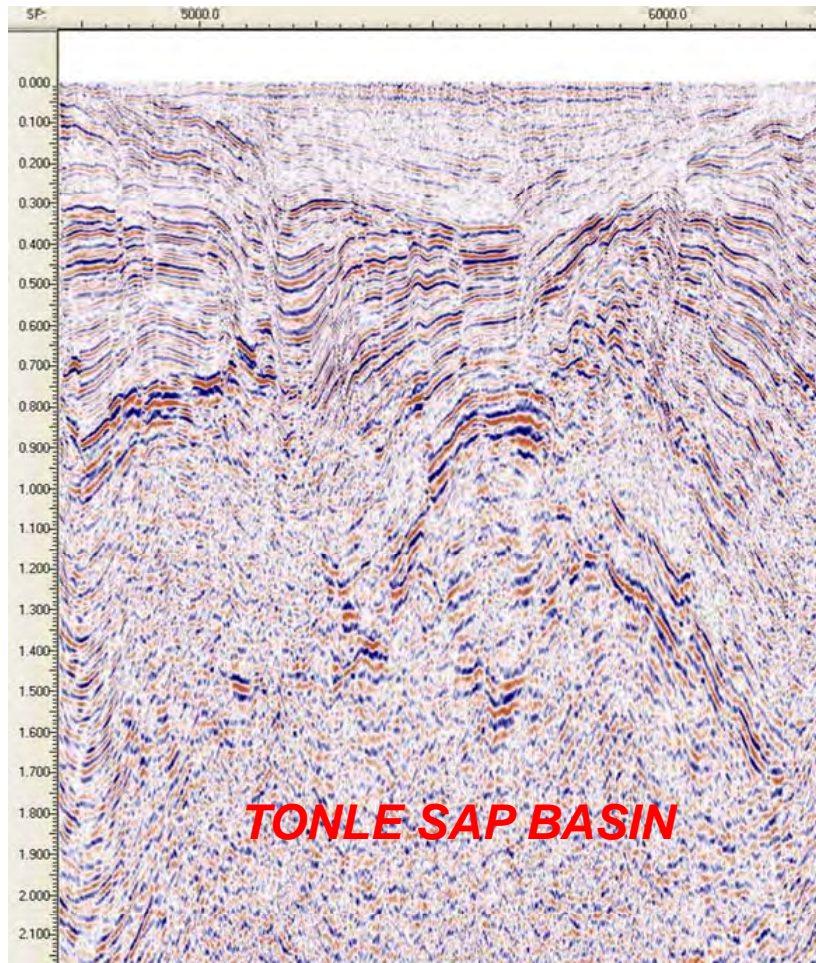
- **2007 MEDCO** was awarded block-XII
- **2009 PVEP** under negotiation block-XV





Petroleum Geology of Cambodia

6



TONLE SAP BASIN DESCRIPTION

Source Rocks

Potential source rocks:

- Oil: Late Triassic – Jurassic ages (oil) transgressive marine strata.
- Gas: Upper Carboniferous – Middle Triassic organic rich lacustrine shales.

Maturation

The oil window has been modeled to occur between 2000 and 2500 m. This interval includes transgressive marine strata of Late Triassic – Jurassic ages, which may possibly be a source of liquid hydrocarbons.

Reservoir Rocks

Potential reservoirs:

- Mesozoic Formations
- Carbonate unit of Late Carboniferous to Permian age

Traps and Seals

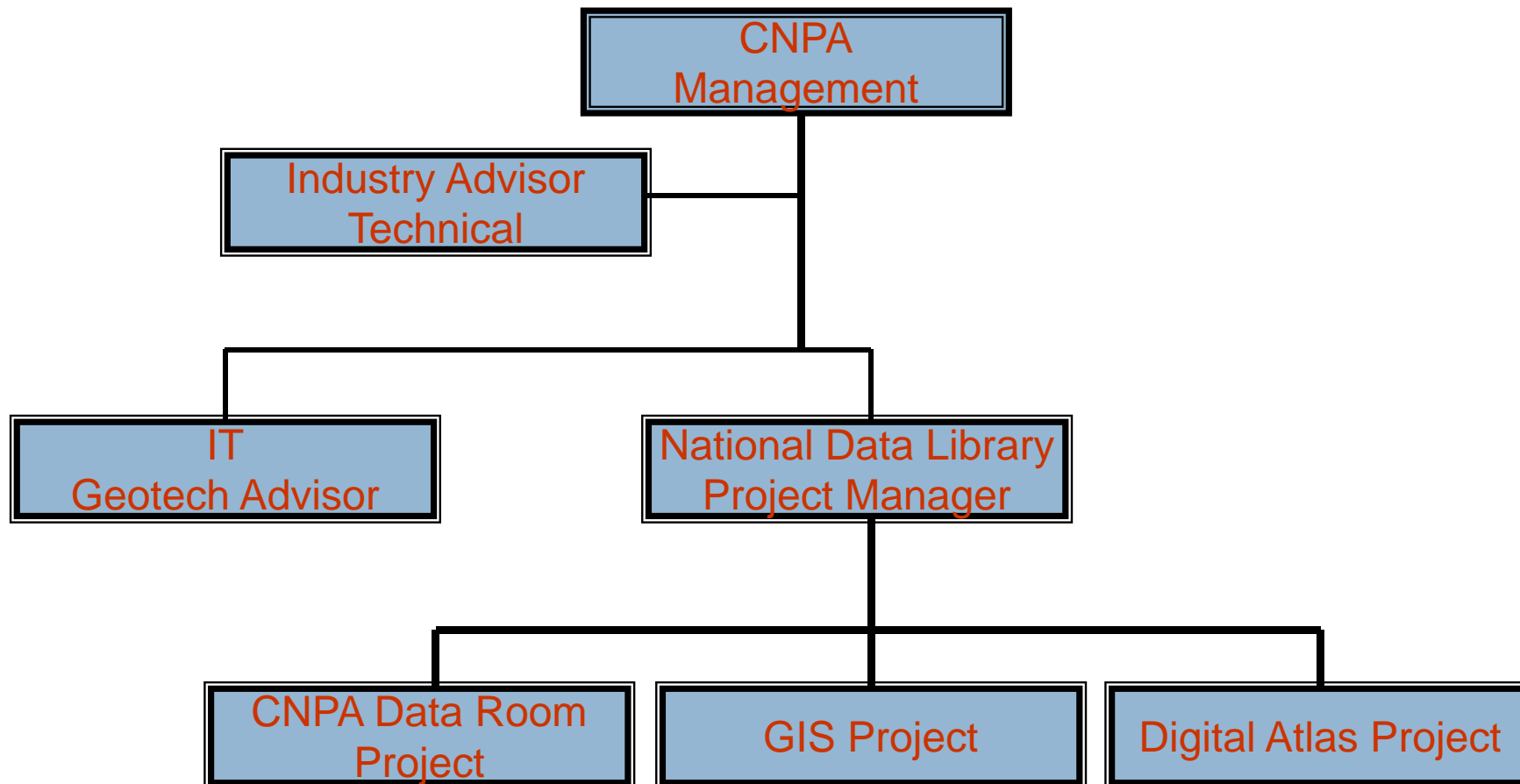
Potential seals:

- Mesozoic salt formations
- Claystones of Palaeozoic and Mesozoic age



Geotechnical Data Standards Guidelines

7





National Petroleum Data Library (NPDL)

8

Phase I

The Project will focus on the consolidation of :

- Documents & Technical Reports
- Well Data-Header, Logs & Reports
- Seismic SEG Y processed/reprocessed data
- Older seismic data with no digital data
- Navigation Data
- Potential field data – Gravity & Magnetic



National Petroleum Data Library (NPDL)

9

Phase I (Cont...)

- Interpretation (SMT Kingdom Project & XYZ data)
- Maps
- GIS Data (Ark View)

Phase II

This phase of the project will include :

- Seismic Field Data
- Well Cores
- Other Data



Coordinate Reference System (CRS)

10

- CNPA has created a integrated database for the whole of Cambodia that uses the accepted WGS84 UTM48N projection.
- These are the “ Standard “ projection parameters in use by order agencies and government department within Cambodia.
- With immediate effect, CNPA requires that all Cambodia Operations report the work they are undertaking, or planning to undertake using WGS84 UTM 48N.



Conclusion

11

We think that the key points from the CCOP and Norwegian natural gas metadata design and structure may assist the CNPA in development of oil and gas metadata. CNPA hope that this workshop will provide best opportunities for CNPA's staff to learn and benefit from the experiences of CCOP Member Countries & representatives from ASCOPE with the respect to the Metadata standard for enhancing the CNPA oil and gas Database Metadata. CNPA would like to extend its sincere thanks to the CCOP and NPD in organizing this workshop and also thanks to the Department of Energy.



THANK YOU FOR YOUR KIND ATTENTION

12

