



**MINISTRY OF ENERGY AND MINERAL RESOURCES
THE REPUBLIC OF INDONESIA**

STATUS OIL & GAS EXPLORATION AND PRODUCTION IN INDONESIA

by :

YUNAN MUZAFFAR

**HEAD OF NEW ACREAGE PREPARATION
DIRECTORATE OF UPSTREAM BUSINESS DEVELOPMENT**

Presented at:

**CCOP – NORWAY PROGRAM FOR ENHANCING PUBLIC PETROLEUM
MANAGEMENT OF THE CCOP MEMBER COUNTRIES**

PARAPAT, NORTH SUMATERA, April 27th, 2010

OUTLINE

- **ROLE OF OIL AND GAS INDUSTRIES**
- **OIL AND GAS POLICY**
- **UPSTREAM CONDITION IN INDONESIA**
- **OPPORTUNITIES AND CHALLENGING IN FRONTIER AREA**



ROLE OF OIL AND GAS INDUSTRIES

ROLE OF OIL AND GAS INDUSTRIES

NATIONAL SUSTAINABLE DEVELOPMENT

SOURCE OF
STATE
REVENUE

DOMESTIC
FUEL

INDUSTRY
FEEDSTOCK

MULTIPLIER
EFFECTS

OIL AND GAS INDUSTRY

HIGH
TECH.

HIGH
CAPITAL

HIGH
RISK

OIL AND GAS POLICY

POLICY AND TARGETS OF INDONESIA OIL & GAS MANAGEMENT

PETROLEUM POLICY

- ❖ Oil and Gas Supply Security
- ❖ Oil And Gas Utilization
- ❖ Oil and Gas Pricing Policy
- ❖ Unconventional Oil and Gas Business
- ❖ Conservation Of Oil and Gas Production
- ❖ Increasing National Capacity In Oil And Gas Industry

FUEL POLICY

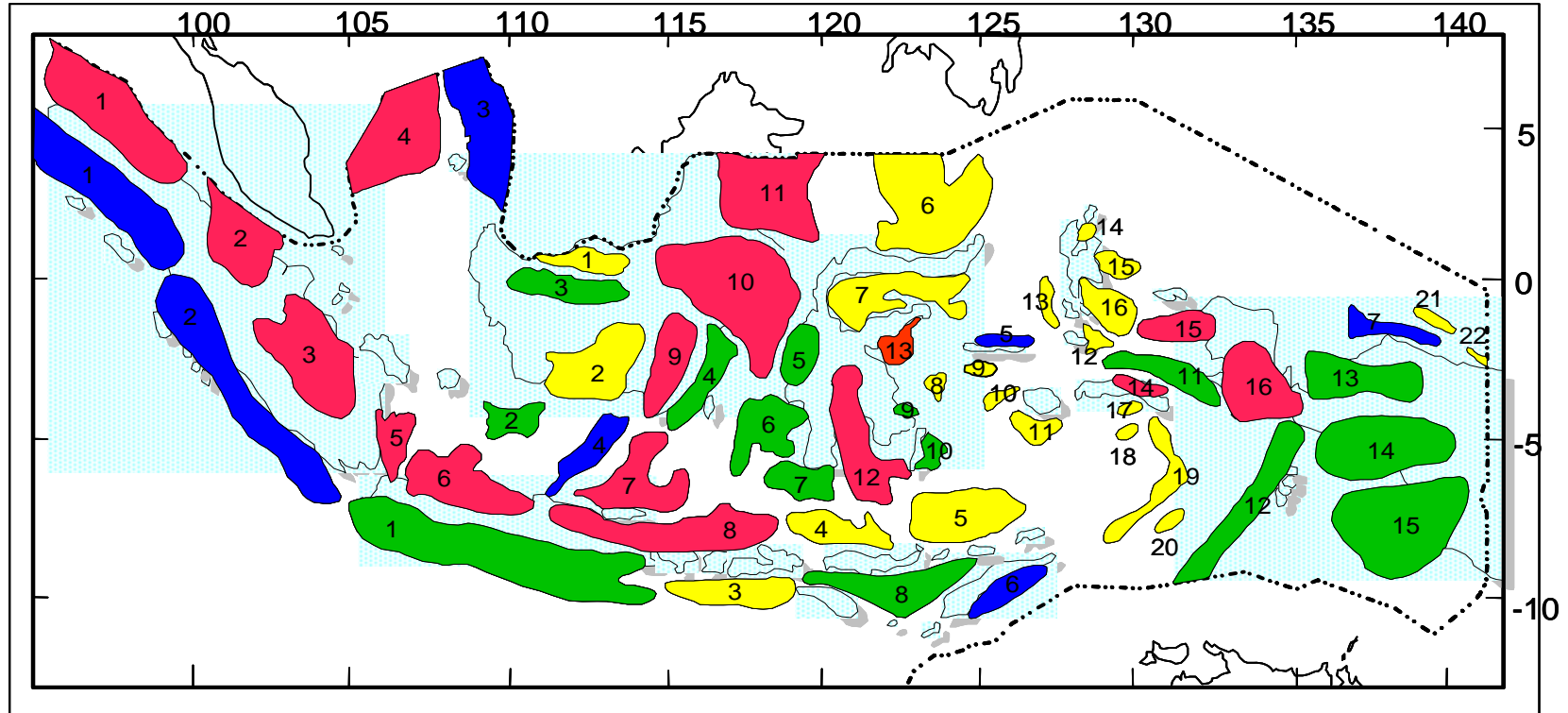
- ❖ Fuel Supply Security
- ❖ Fuel Categorization
- ❖ Pricing Policy
- ❖ Fuel Diversification
- ❖ Fuel Standard and Quality
- ❖ Fuel Efficiency

TARGETS FOR 2025

- Maintain oil production level of 1 Million BOPD
- 50% national operatorship
- 91% local content (goods and services)
- 99% skilled national workforce
- Security of domestic Fuel Supply and Industrial Feedstock
- Increasing added value for sustainable development

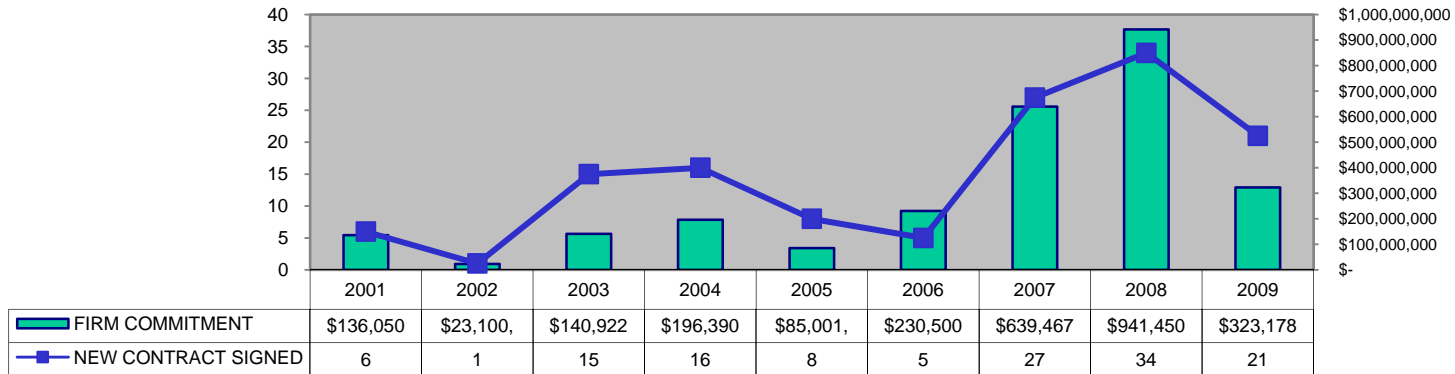
UPSTREAM CONDITION IN INDONESIA

60 TERTIARY SEDIMENTARY BASINS in INDONESIA



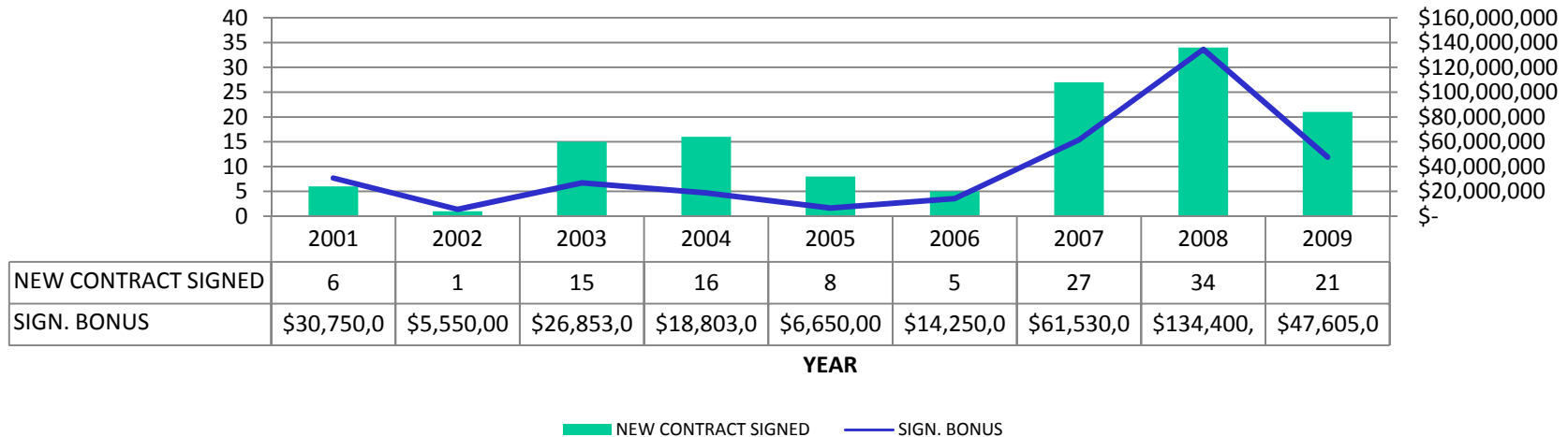
	Producing Basin (16)		Drilled Basin, No Discovery yet (15)		Drilled and Proven Discovery, but not Production yet (7)		Frontier Basin (22)																																																				
1. North Sumatera	2. Central Sumatera	3. South Sumatera	4. West Natuna	5. Sunda	6. NW. Java	7. NE. Java Sea	8. NE. Java	9. Barito	10. Kutai	11. Tarakan	12. Bone	13. Banggai	14. Seram	15. Salawati	16. Bintuni	1. South Java	2. Biliton	3. Melawi	4. Asem-Asem	5. Lariang	6. South Makasar	7. Spermonde	8. Sawu	9. Manui	10. Buton	11. Misool	12. Palung Aru	13. Waipoga	14. Akimeugah	15. Sahul	1. Sibolga	2. Bengkulu	3. East Natuna	4. Pati	5. Sula	6. Timor	7. Biak	1. Ketungau	2. Pembuang	3. Lombok Bali	4. Flores	5. Tukang Besi	6. Minahasa	7. Gorontalo	8. Sala Bangka	9. South Sula	10. West Buru	11. Buru	12. South Obi	13. North Obi	14. North Halmahera	15. East Halmahera	16. South Halmahera	17. South Seram	18. West Weber	19. Weber	20. Tanimbar	21. Waropen	22. Jayapura

NEW CONTRACT & FIRM COMMITMENT



Total Firm Commitment 2001 - 2009 = US\$ 2,7billion

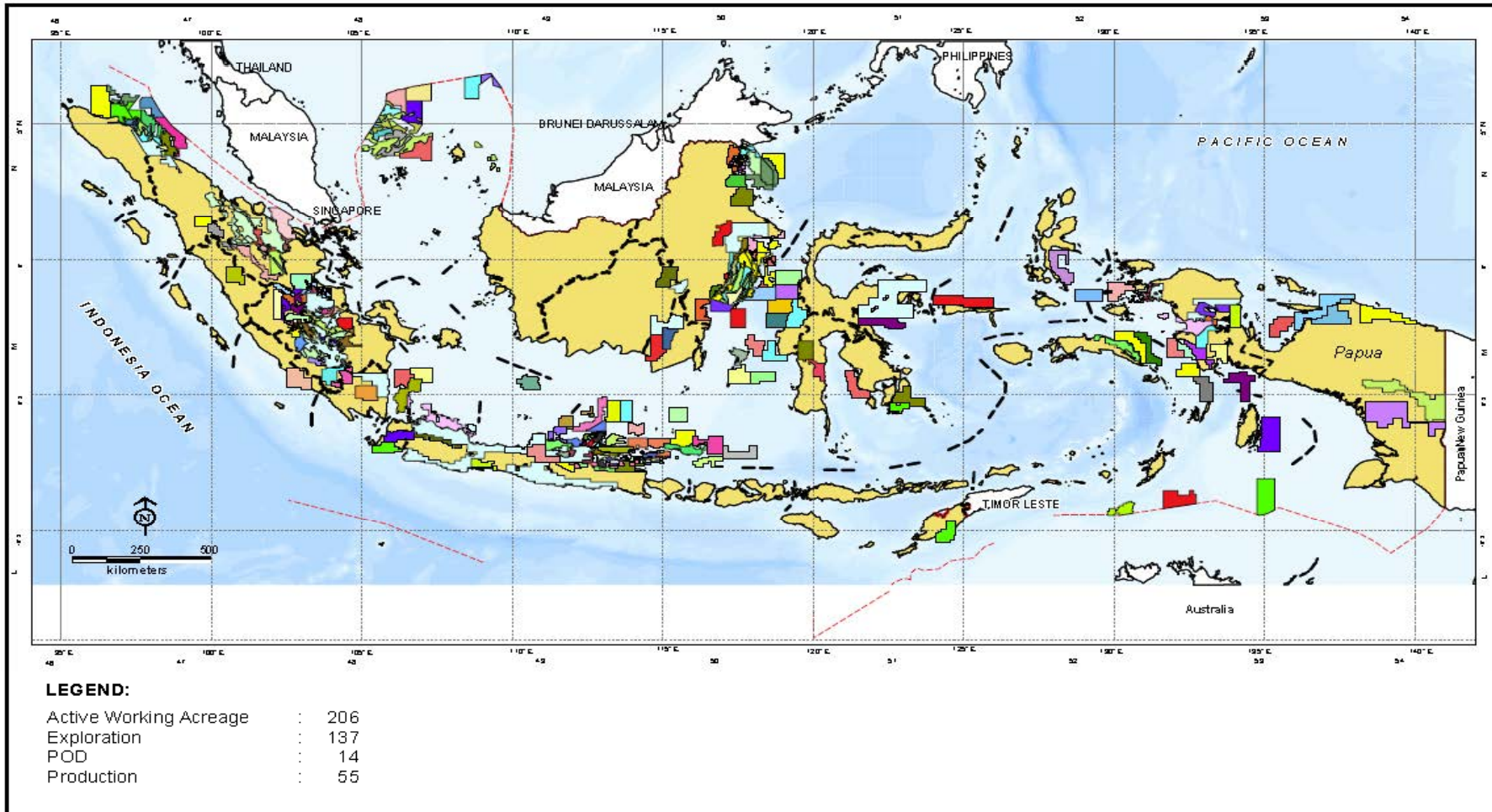
NEW KKS & SIGNATURE BONUS





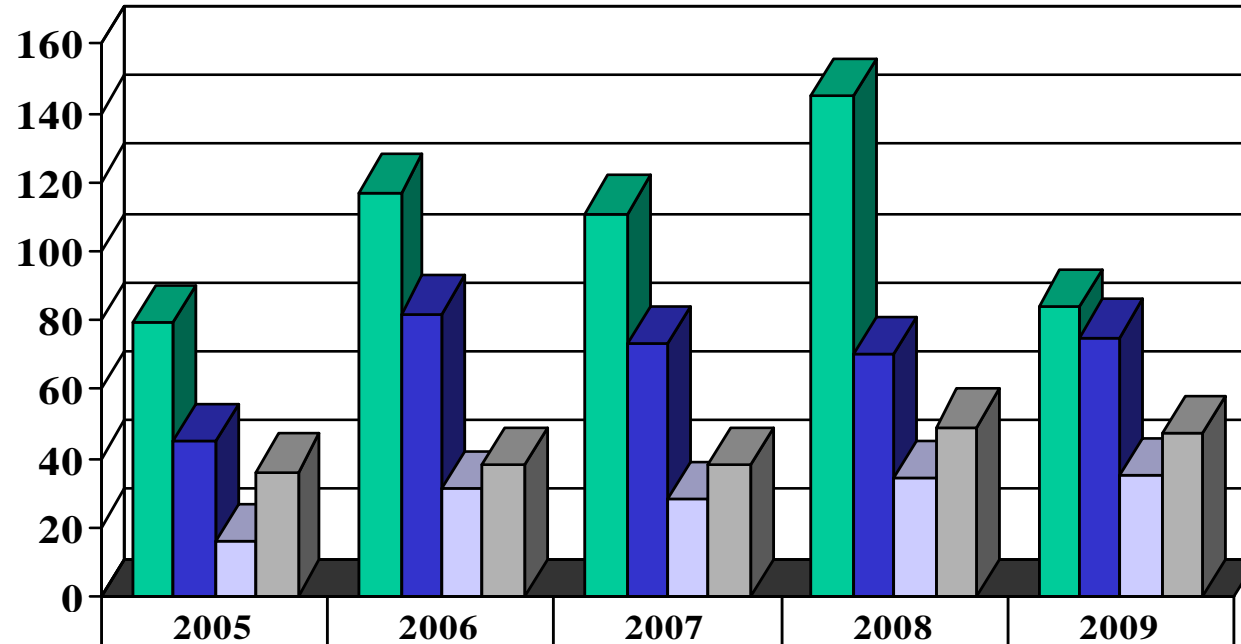
INDONESIA PETROLEUM WORKING AREA MAP

Status : April 2010



EXPLORATION DRILLING

2005 - 2009

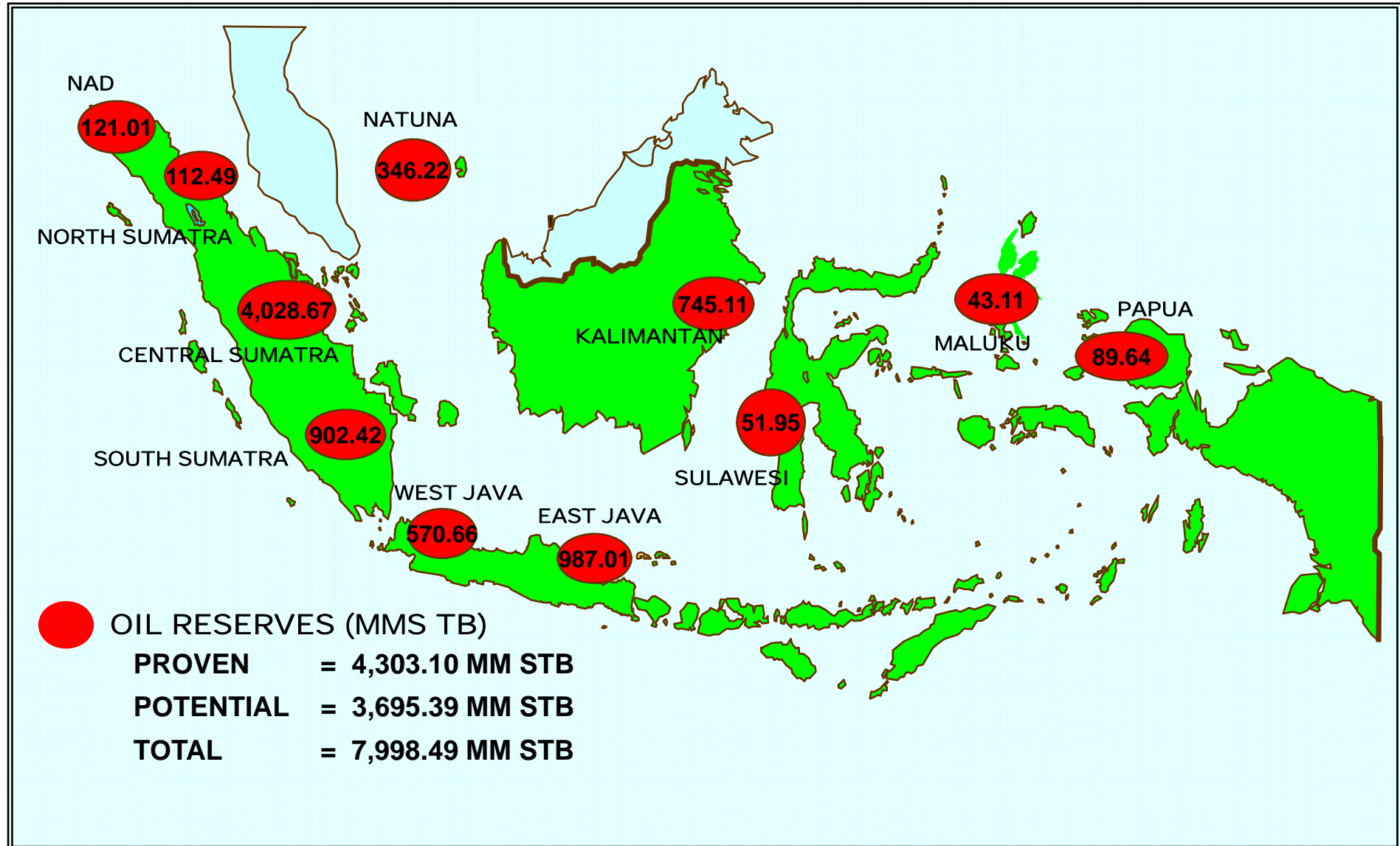


	2005	2006	2007	2008	2009
Plan	79	117	111	145	84
Realization	45	82	73	70	75
Discovery	16	31	28	34	35
Success Ratio (%)	36	38	38	49	47

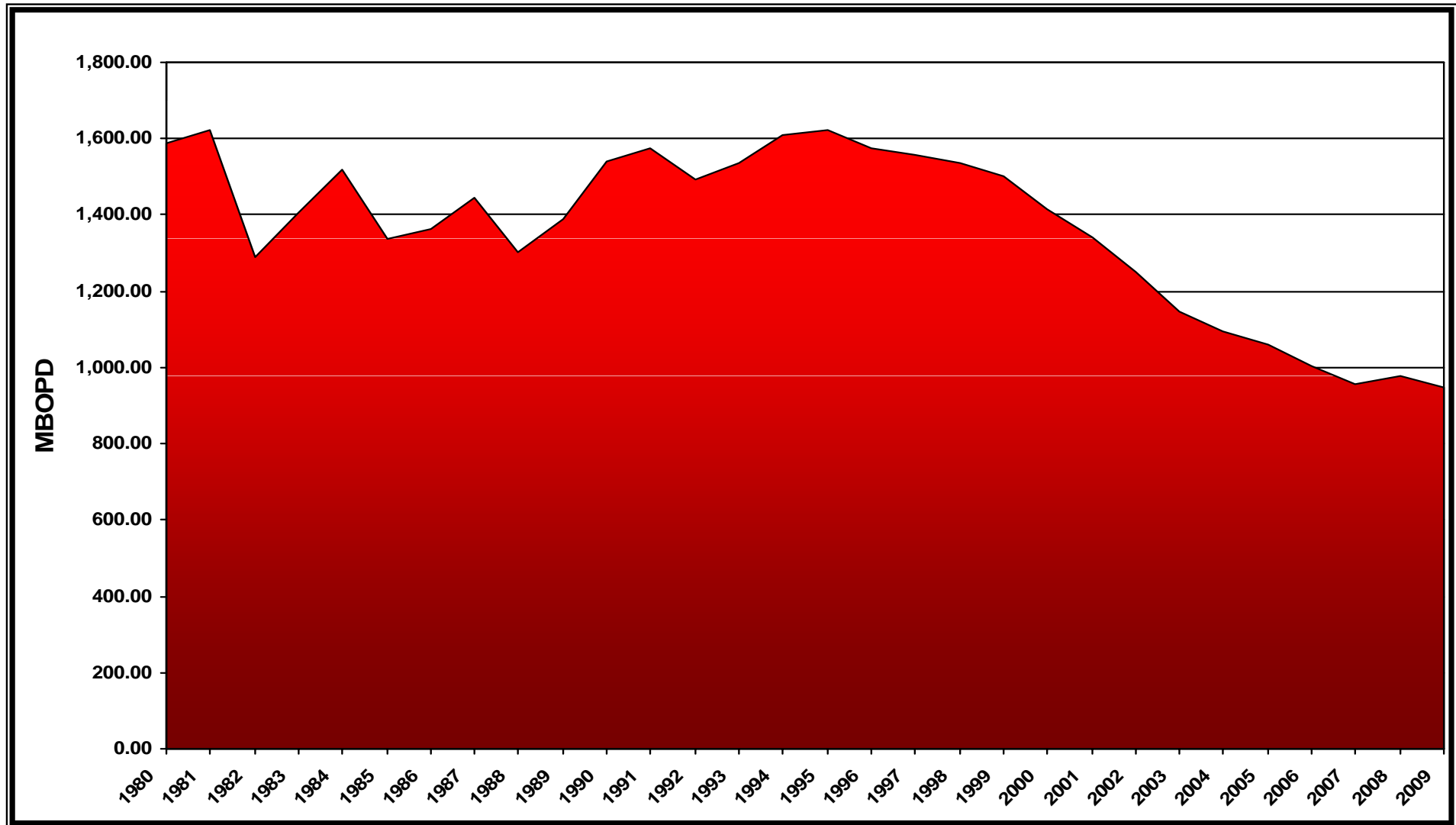
■ Plan
 ■ Realization
 ■ Discovery
 ■ Success Ratio (%)



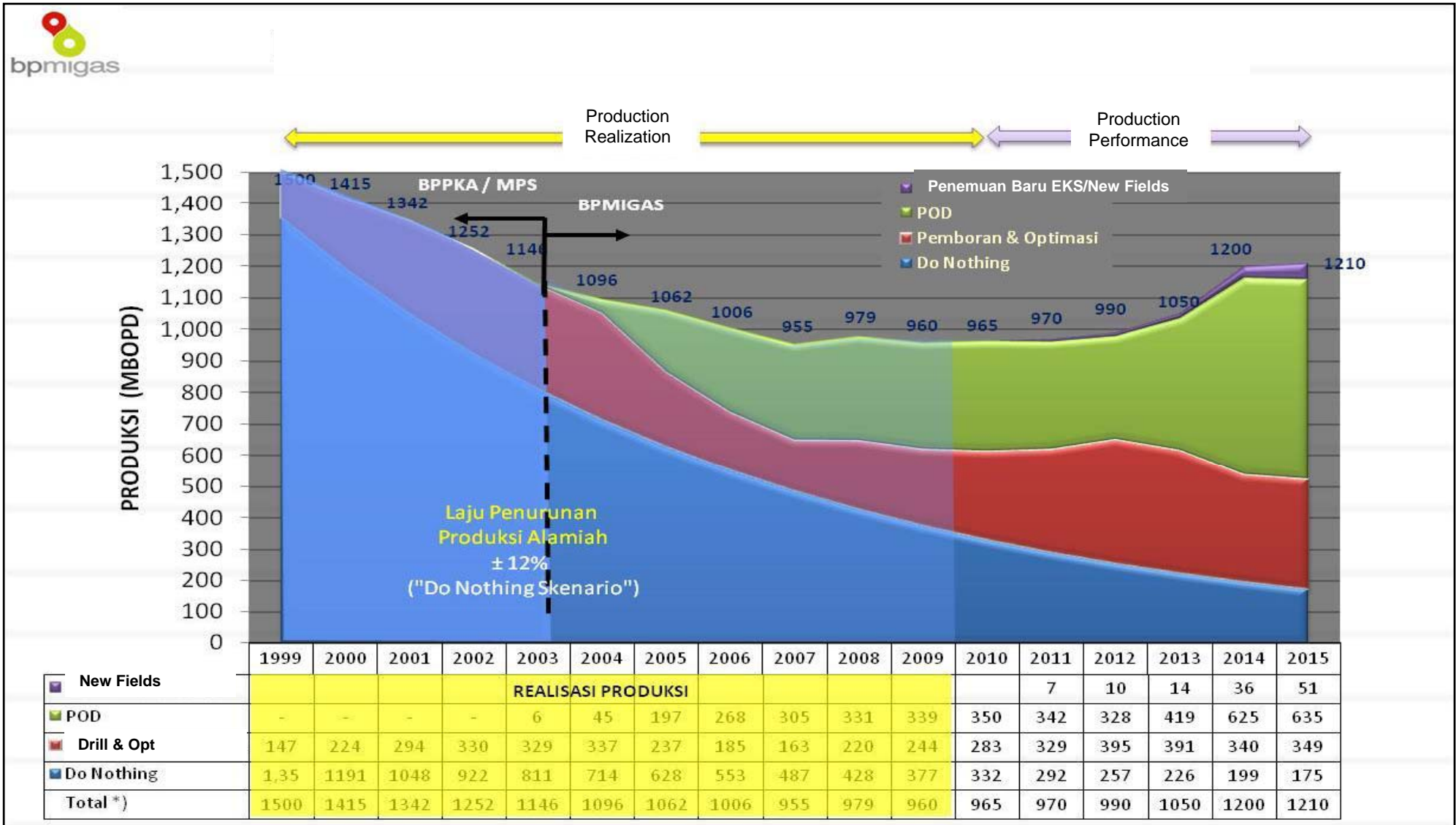
OIL RESERVES (AS OF JANUARY 1st 2009)



INDONESIA OIL PRODUCTION 1980 - 2009

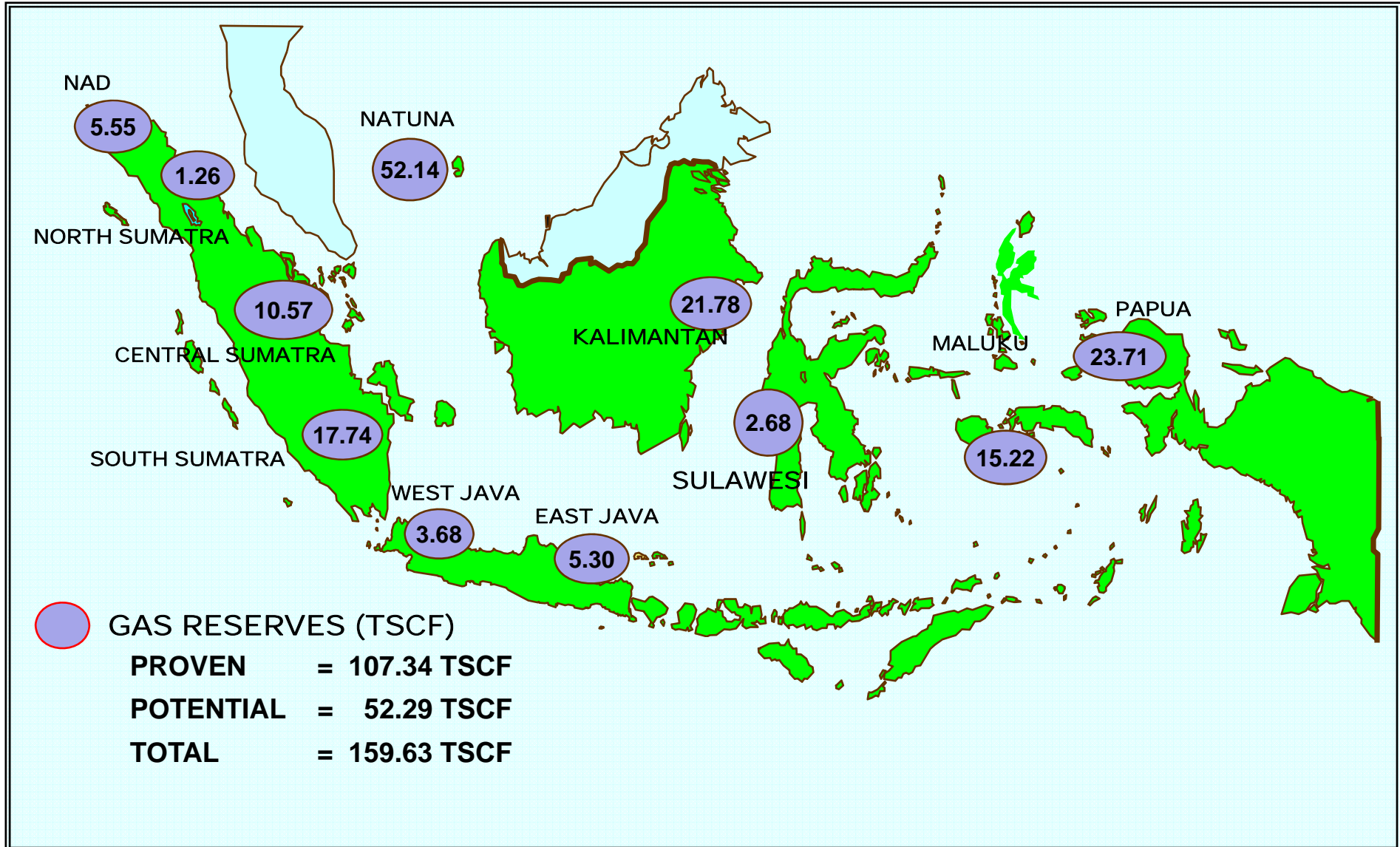


EFFORTS IN INCREASING PRODUCTION: 1999 - 2015

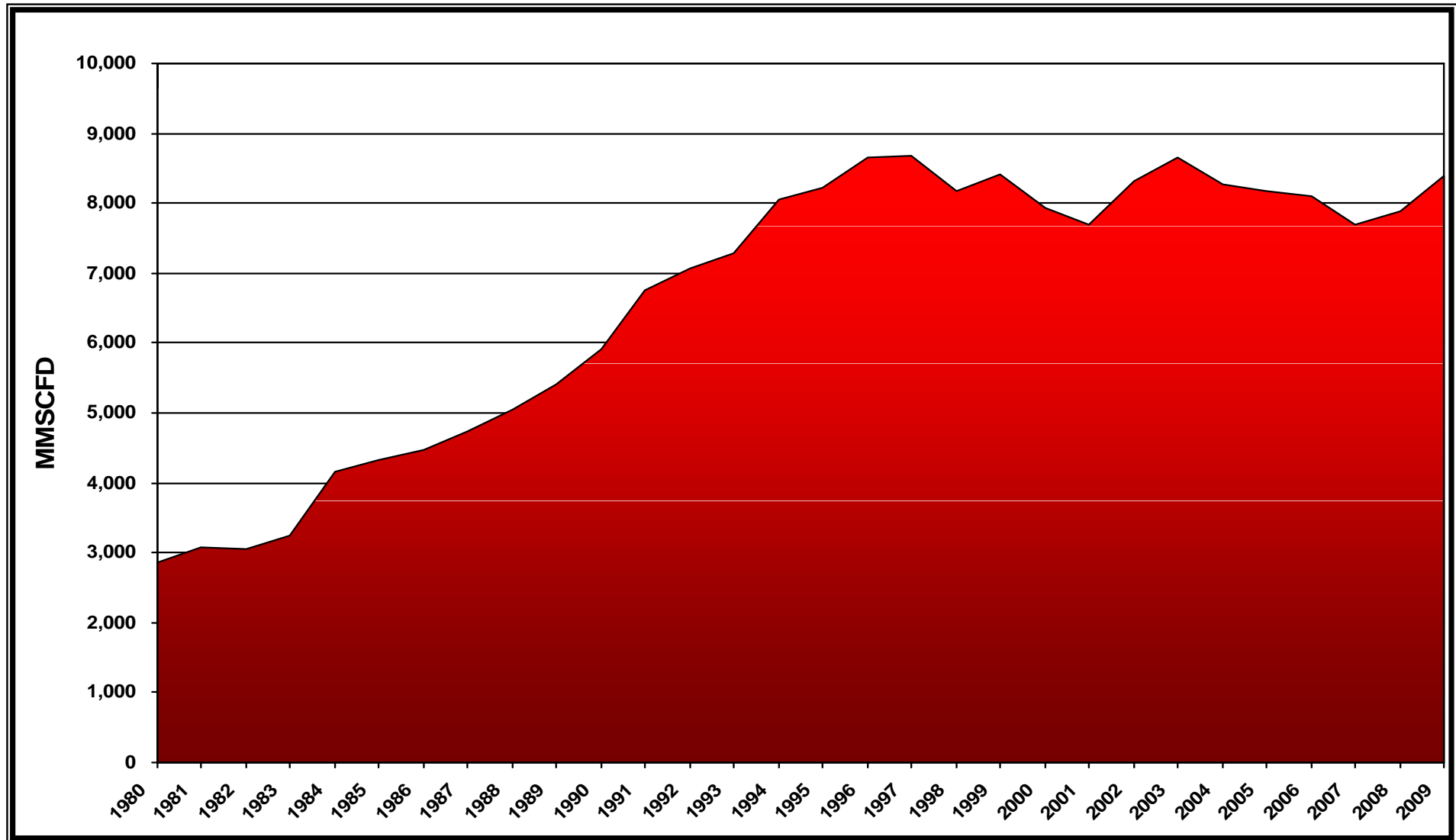


GAS RESERVES

(AS OF JANUARY 1st 2009)

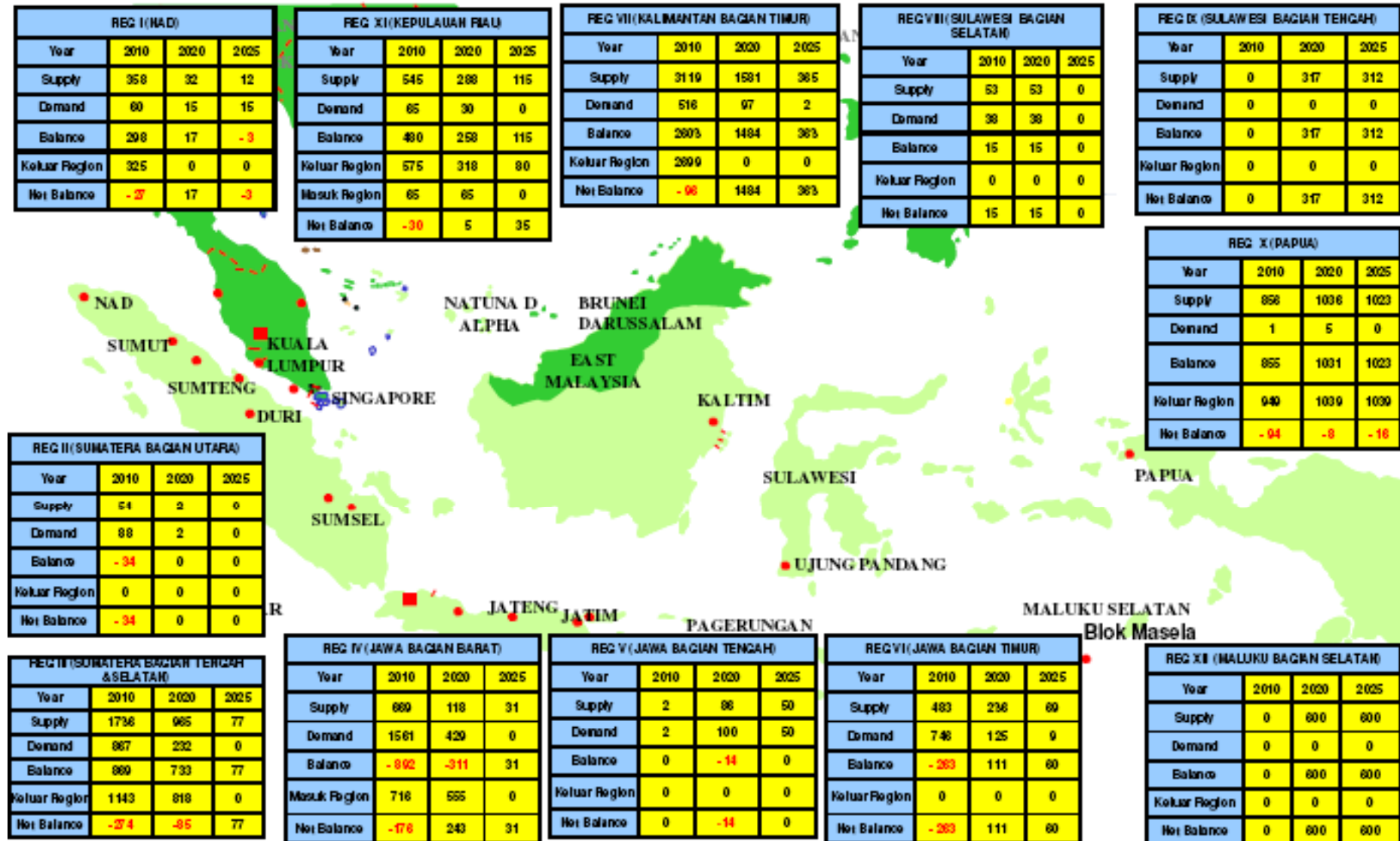


INDONESIA GAS PRODUCTION 1980 - 2009



GAS BALANCE OF INDONESIA 2010-2025

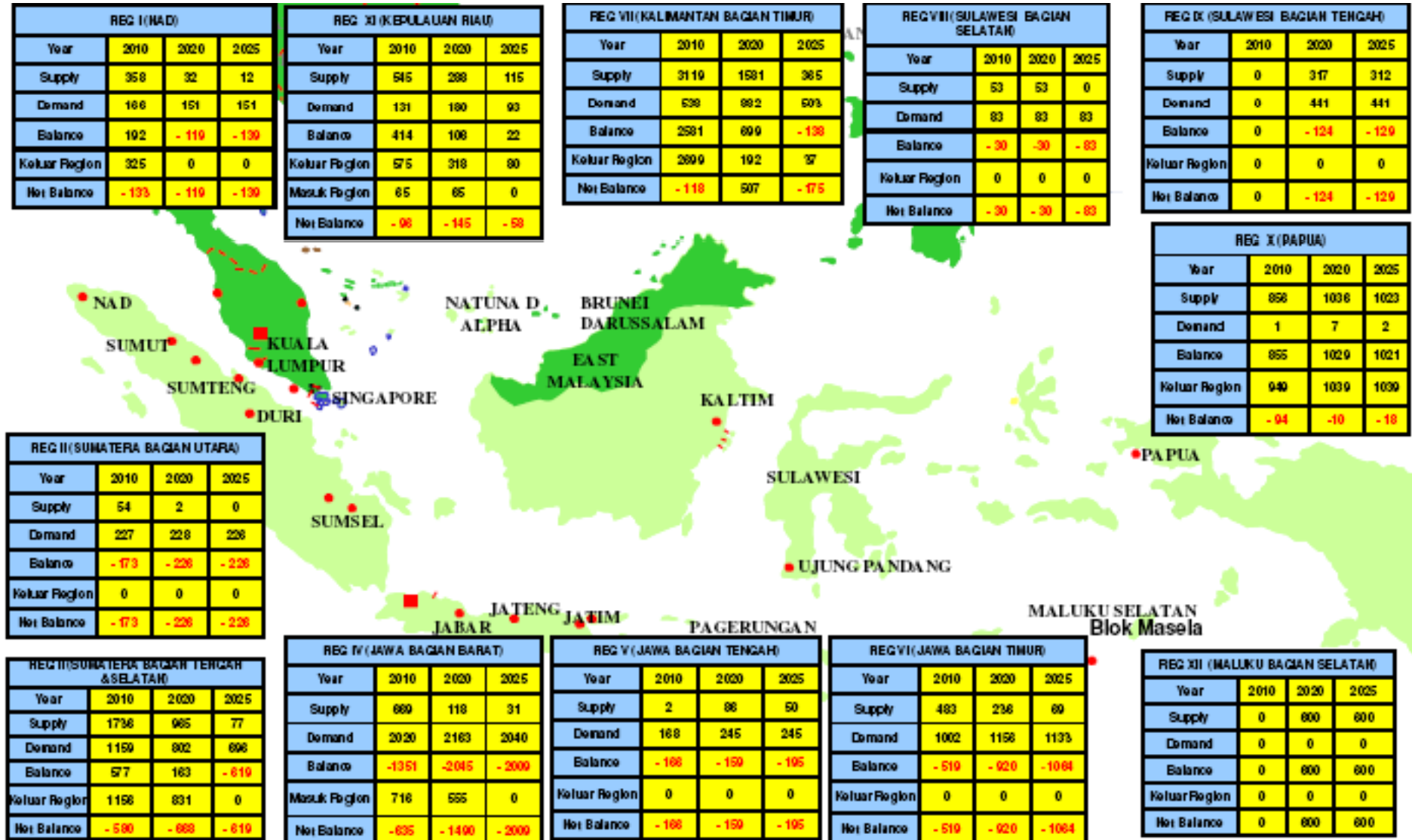
(EXISTING SUPPLY + PROJECT SUPPLY VS CONTRACTED DEMAND)





GAS BALANCE OF INDONESIA 2010-2025

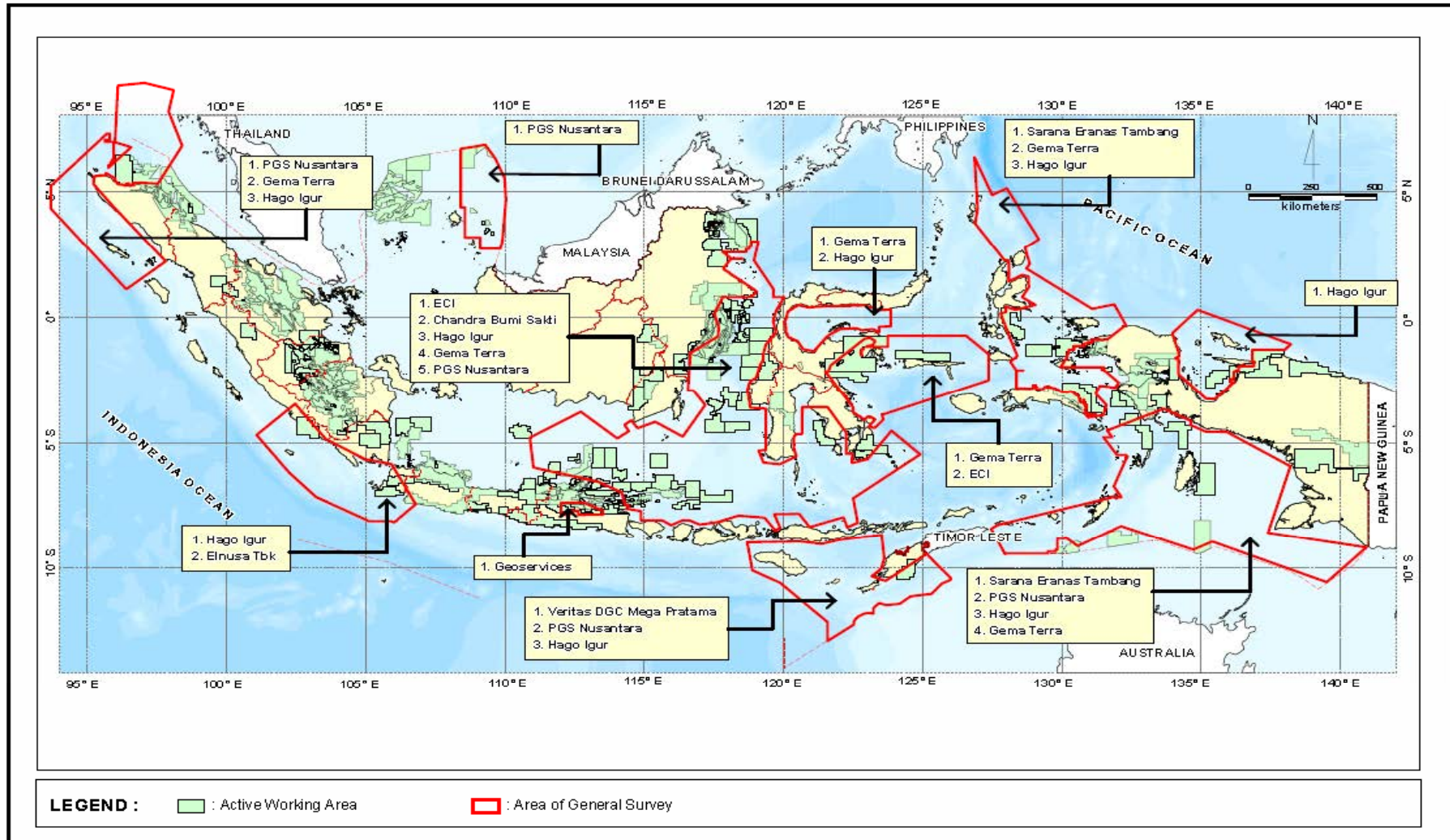
(EXISTING SUPPLY + PROJECT SUPPLY VS CONTRACTED DEMAND + COMMITTED DEMAND))



OPPORTUNITIES AND CHALLENGE IN FRONTIER AREA

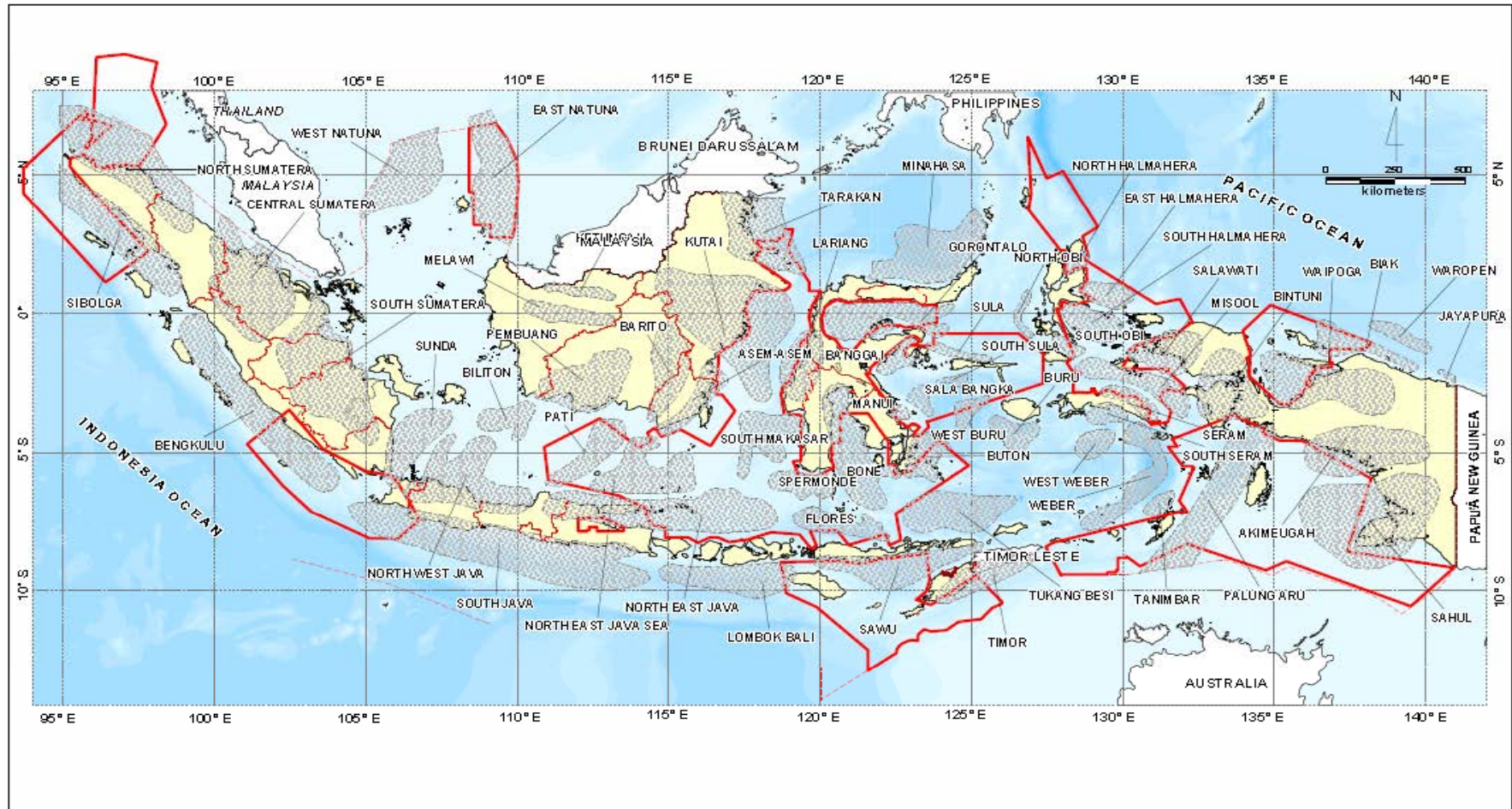


General Survey Area Map (1999 - 2009)





General Survey Area Map (1999 - 2009)



LEGEND :  : Basin  : Area of General Survey



Exploration History of Sibolga Forearc Basin

1968-1978 : Union Oil Company

- Acquired 10,941 km 2D Seismic Data
- Drilled 19 exploration wells (six non-conomic biogenic gas wells: C1: 98.92-100%)

1969-1973 : Marathon-Jenny Oil Group

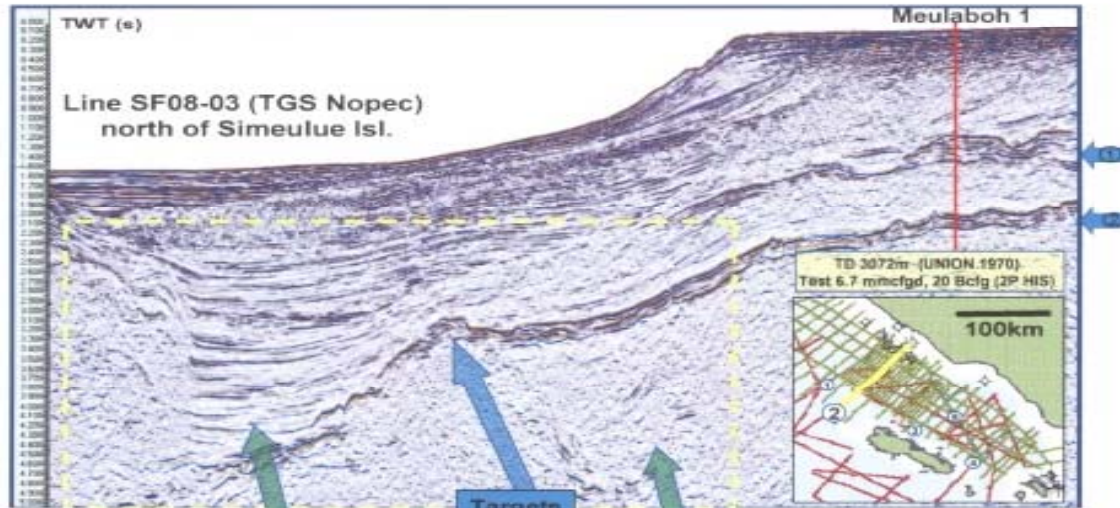
- 2D seismic survey surrounding Simeuleu

1996-1999 : Caltex (Nias PSC)

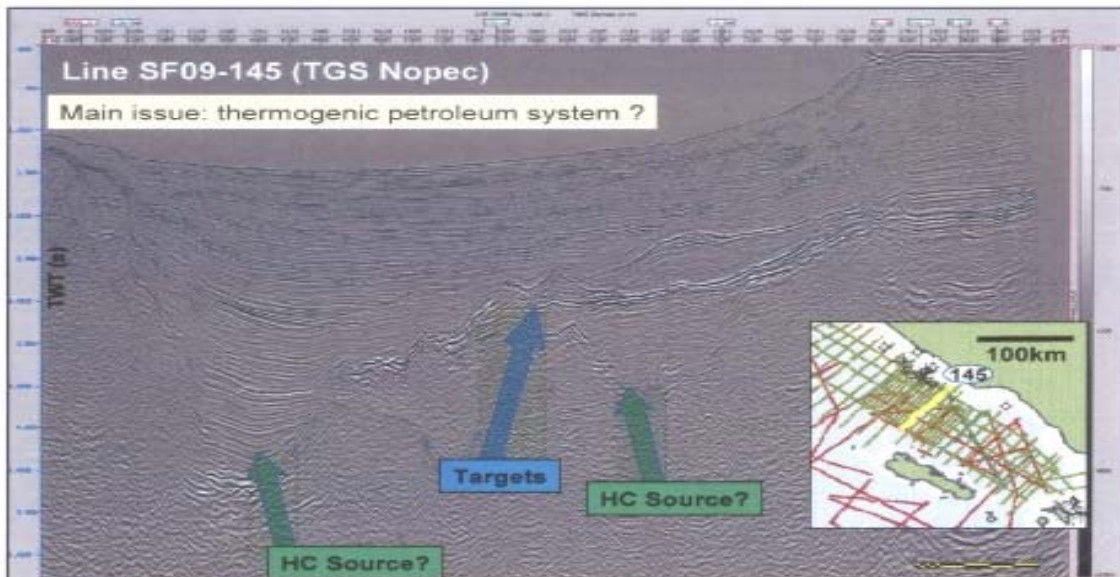
- 10,000 sq km
- Acquired 1959 km 2-D seismic and gravity data
- Drilled 1 exploration well

Meulaboh -1 : Objective Carbonate in Miocene Late

Forearc basin has the lowest HFU (Heat Flow Value) : 1.21 (S. Sumatera 2.56).



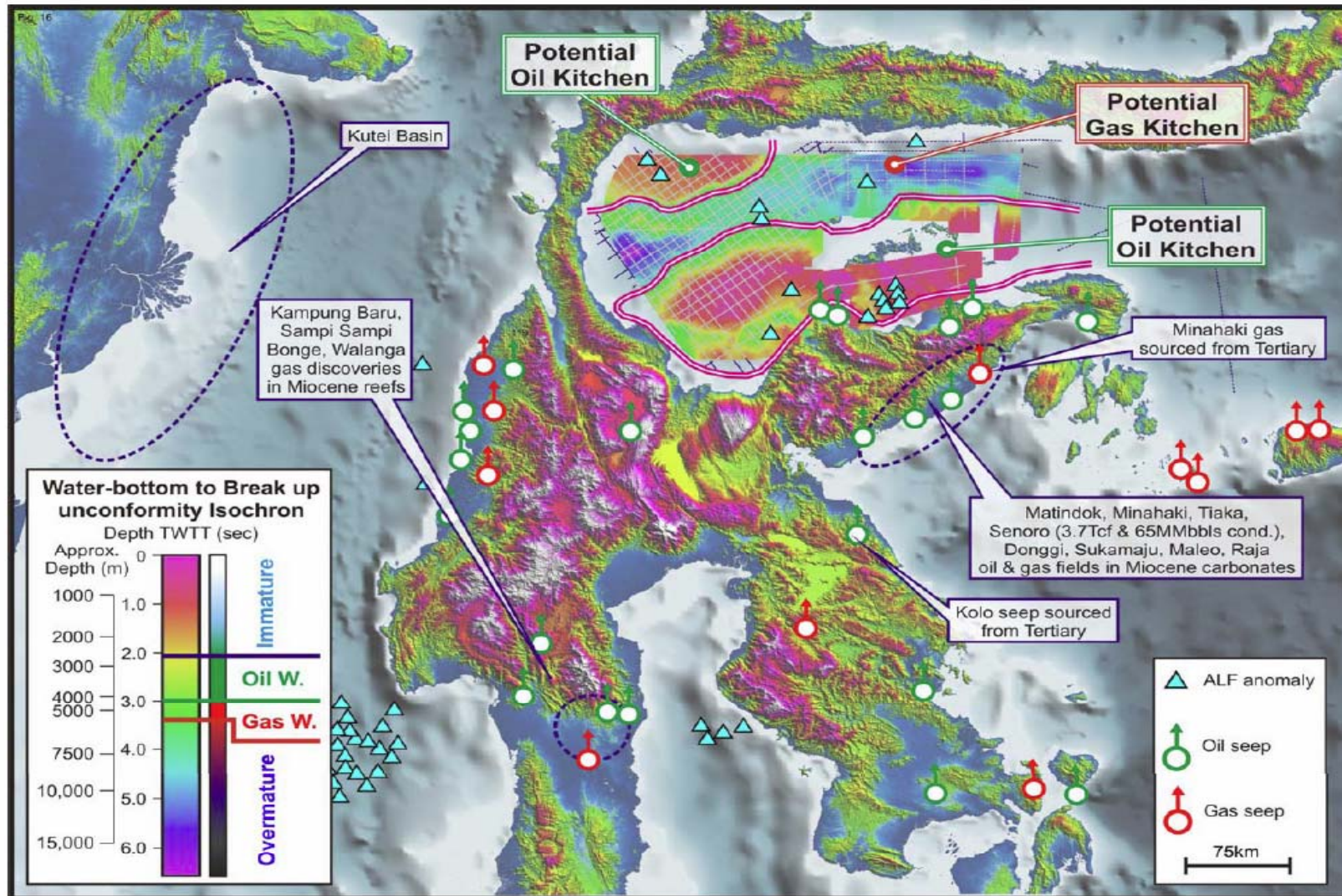
HC Source? Targets HC Source?
Petroleum System: HC source and targets



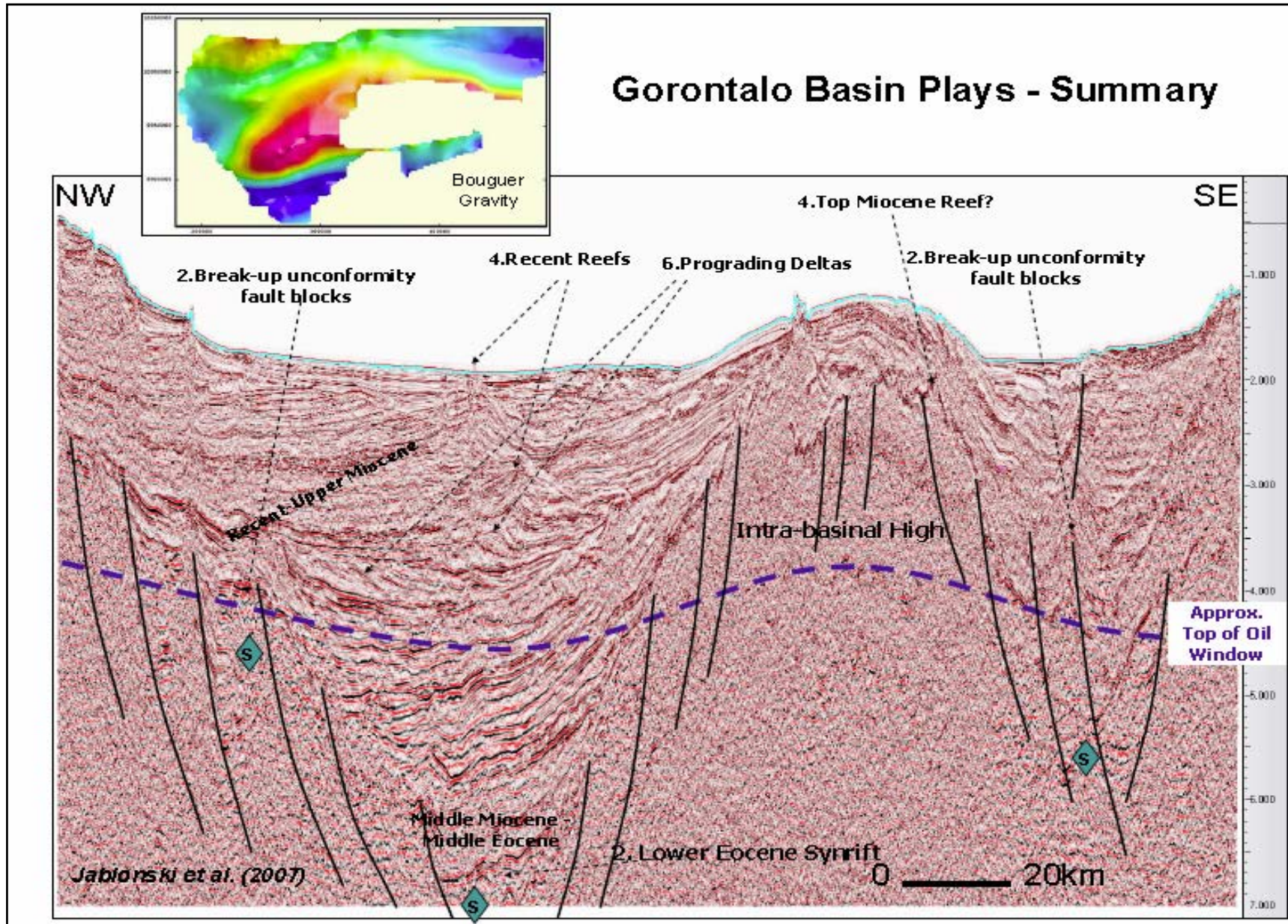
Seismic line SF09-145



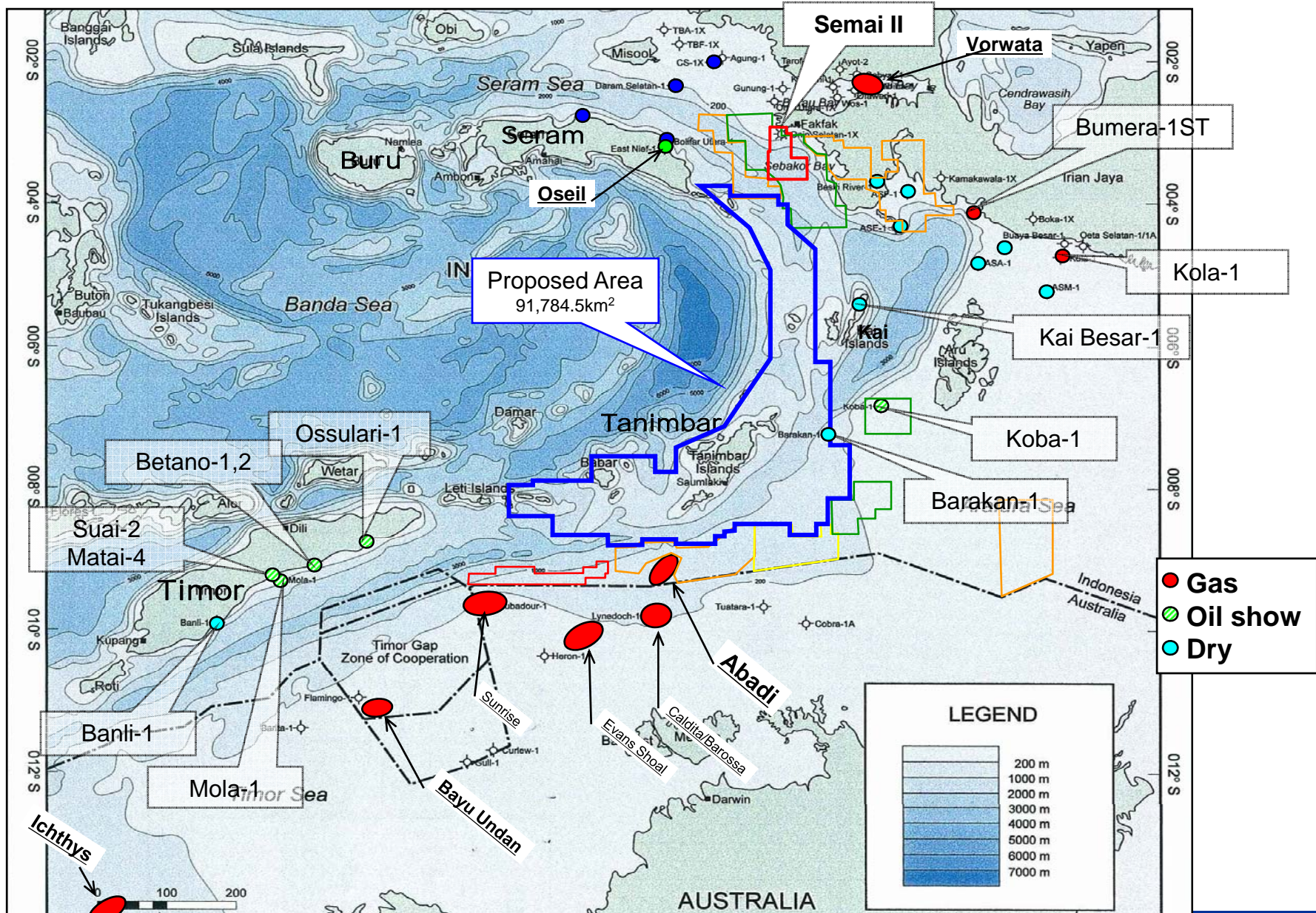
Hydrocarbon Charge, seeps, offshore satellite anomalies & and potential gas/oil kitchens in Gorontalo & surrounding areas



Jablonski et al. (2007)



Banda outer Arc



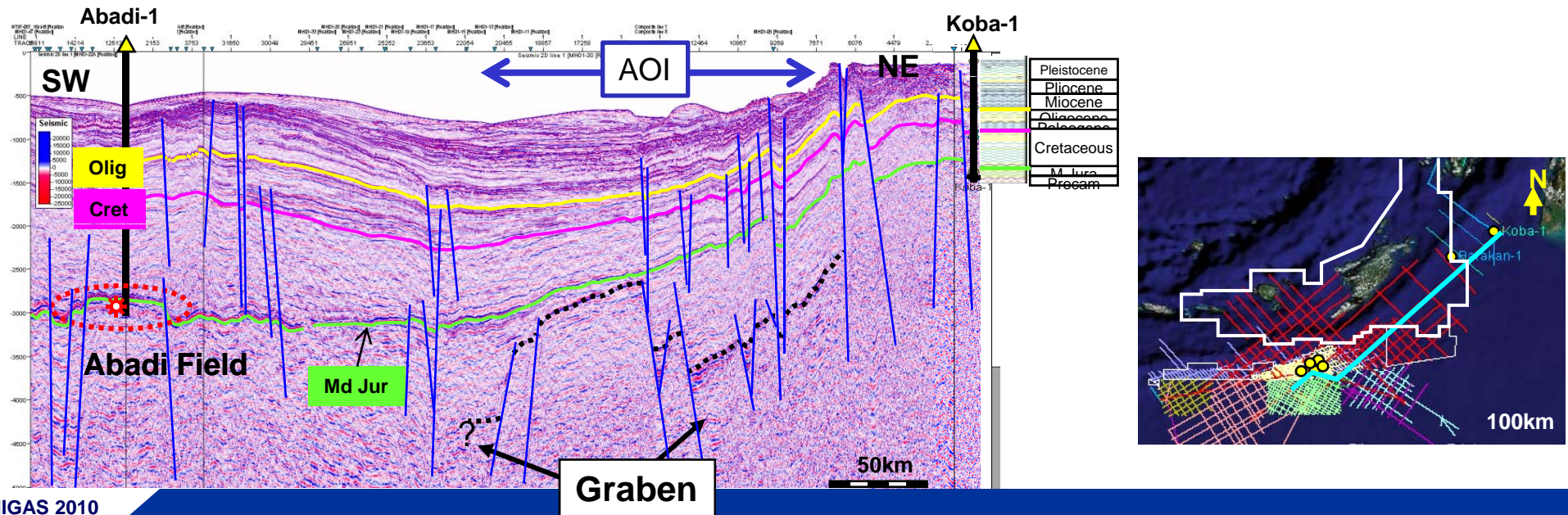
Play type & Geological Uncertainty

<<Play type>>

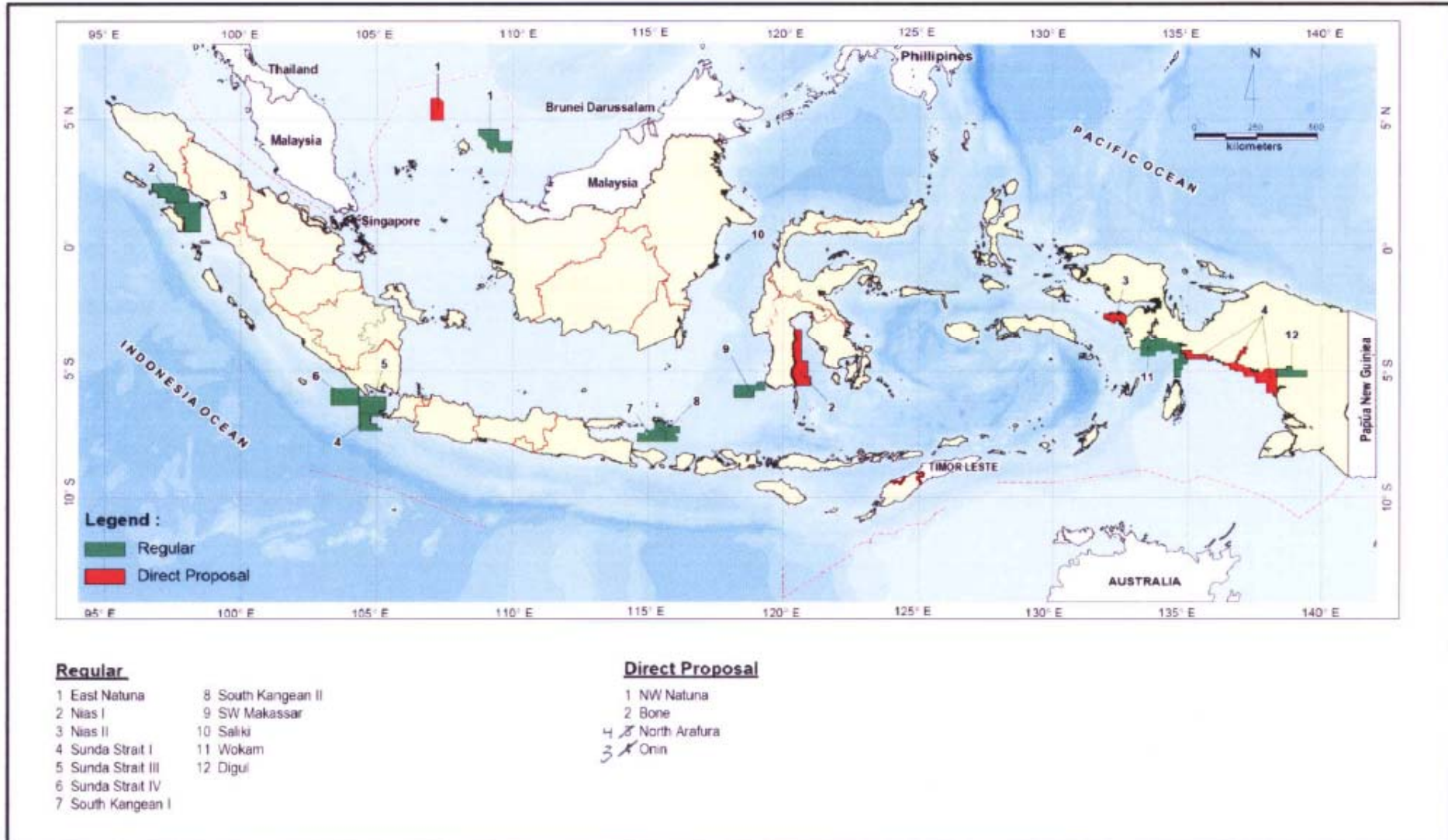
Horst >>>> Giant Abadi Field!! (Proved Play)

<<Geological Uncertainty>>

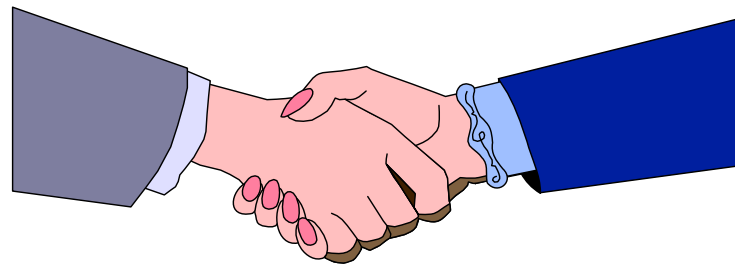
- Structure Definition >>>> Application of Latest Geophysical Technology
- Source potential and distribution >>>> Confirmation of depression area
- Reservoir Distribution >>>> Analogue from Surface Geology



TENTATIVE INDONESIA PETROLEUM BIDDING ROUND YEAR 2010



THANK YOU



www.migas.esdm.go.id