

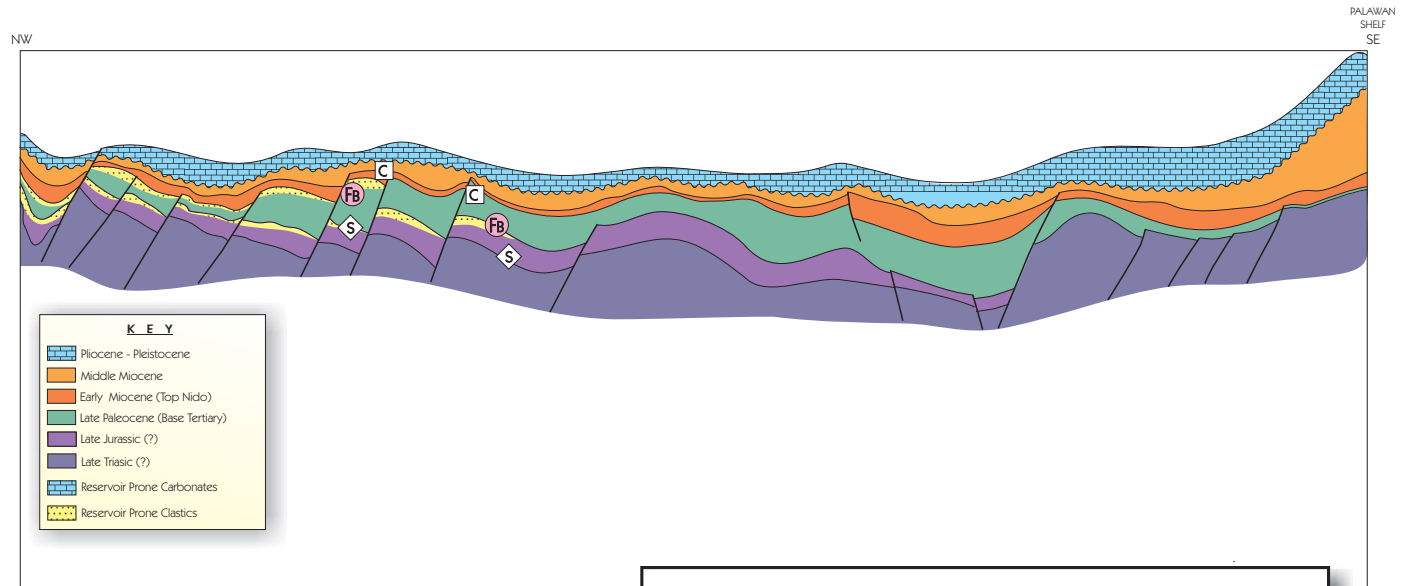
REED BANK BASIN PLAY TYPES

PLAY 1 / Rb - (FB) (FAULT BLOCK)

- (R) Eocene - Paleocene "Sampaguita Sands" Cretaceous & Jurassic sands
- (C) Early Miocene - Eocene shale/siltstone Intraformational Mesozoic fine clastics

PLAY COMPONENTS:

- (S) Source Rock
- (R) Reservoir Rock
- (C) Cap-Rock



Schematic Play Concept Diagram for the Petroleum System in the Reed Bank Basin