

CENTRAL LUZON BASIN PLAY TYPES

PLAY 1 / C I - AN (ANTICLINE)

- Ⓡ Early Miocene sands & carbonate and Middle to Late Miocene turbidites sands and uplifted sand
- ⓐ Middle to Late Miocene claystone

PLAY 2 / C I - RB (REEF BUILD-UP)

- Ⓡ Early to Middle Miocene Reef build-ups and possible Late Miocene build-ups
- ⓐ Middle Miocene to Pliocene shale

PLAY 3 / C I - STs (STRATIGRAPHIC - SHALLOW)

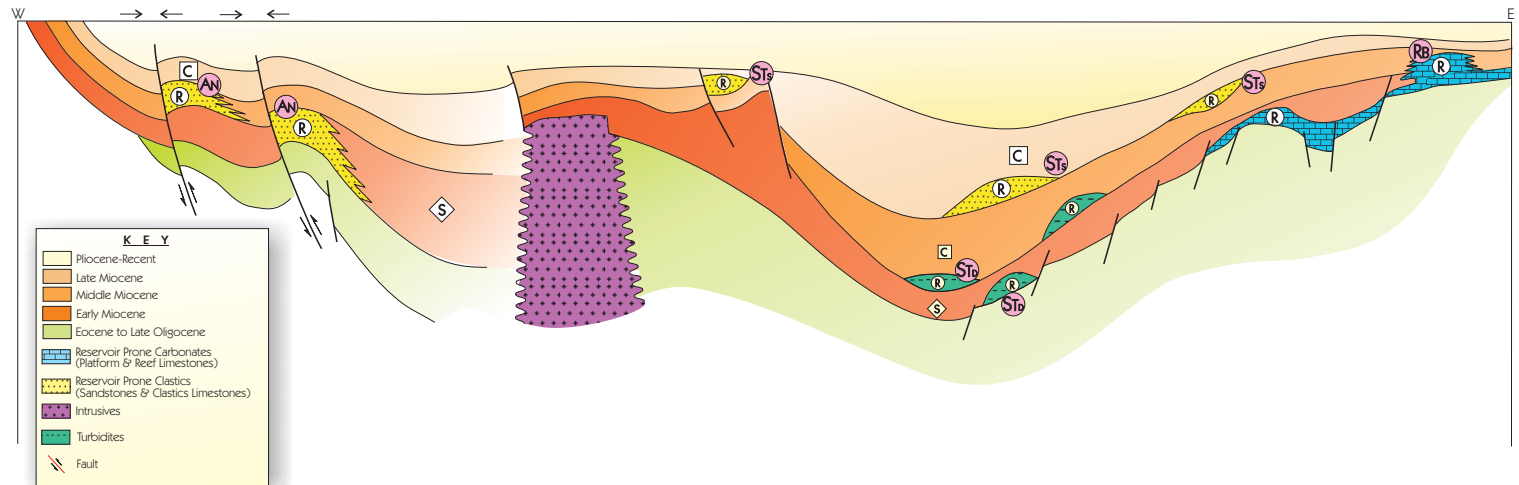
- Ⓡ Early to Middle Miocene sands & Pliocene deltaic and channel sands, Late Miocene to Pliocene fluvial sands
- ⓐ Middle Miocene shale, Pliocene claystone and Late Miocene to Pliocene mudstone & claystone

PLAY 4 / C I - STd (STRATIGRAPHIC - DEEP)

- Ⓡ Middle to Late Miocene turbidites sands
- ⓐ Middle Miocene claystone

PLAY COMPONENTS:

PRIMARY	SECONDARY
Ⓢ Source Rock	Ⓢ Source Rock
Ⓡ Reservoir Rock	Ⓡ Reservoir Rock
ⓐ Cap-Rock	ⓐ Cap-Rock



Schematic Play Concept Diagram for the Petroleum System in the Central Luzon Basin