

CAGAYAN BASIN PLAY TYPES

PLAY 1 / Cb - RB (REEF BUILD-UP)

- Ⓡ Early to Late Miocene carbonates
- ⓐ Early Pliocene to Pleistocene shales

PLAY 2 / Cb - FB (FAULT BLOCK)

- Ⓡ Early Miocene to Early Pliocene carbonates
- ⓐ Middle Miocene to Early Pliocene reworked limestone
- ⓐ Early Miocene to Pliocene basinal claystones

PLAY 3 / Cb - BD (BASEMENT DRAPE)

- Ⓡ Late Oligocene to Early Miocene Upper Zigzag Formation
- ⓐ Middle Miocene basinal claystone

PLAY 4 / Cb - MD (MUD DIAPIR-RELATED)

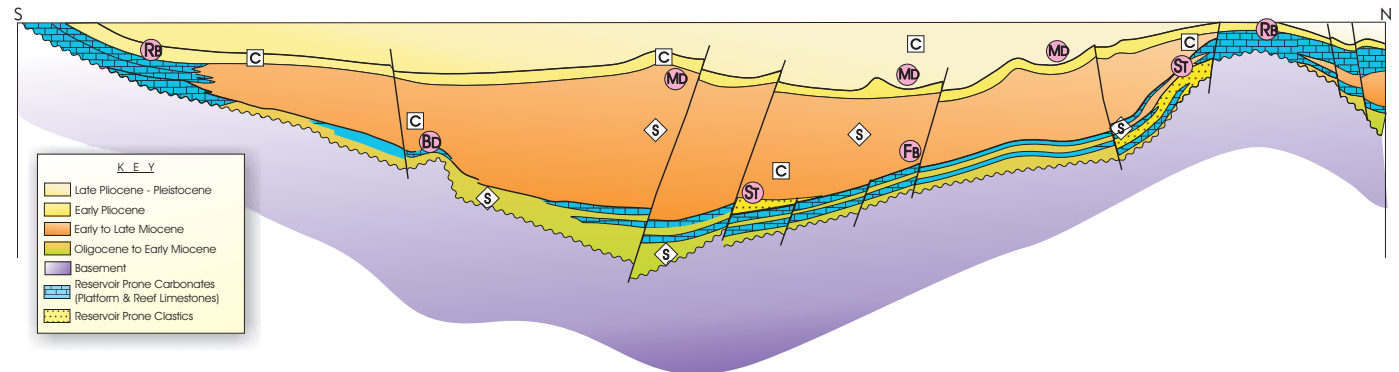
- Ⓡ Early Miocene to Pliocene sands
- ⓐ Middle Miocene claystone

PLAY 5 / Cb - ST (STRATIGRAPHIC)

- Ⓡ Early to Middle Miocene sands
- ⓐ Middle to Late Miocene basinal claystone

PLAY COMPONENTS:

- Ⓢ Source Rock
- Ⓡ Reservoir Rock
- ⓐ Cap-Rock



Schematic Play Concept Diagram for the Petroleum System in the Cagayan Basin