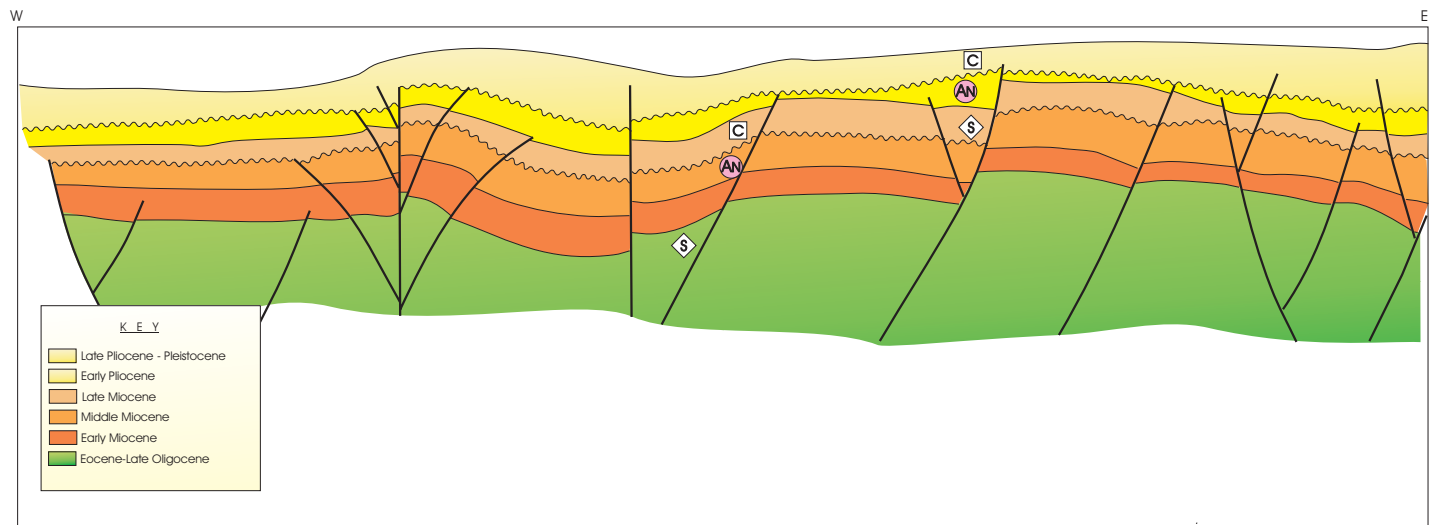


**AGUSAN-DAVAO BASIN PLAY TYPES**

**PLAY 1 / Ad - AN (ANTICLINE)**

- Ⓜ Middle Miocene shelfal sandstone & Late Pliocene clastics
- ⓐ Middle Miocene - Pliocene fine clastics

- PLAY COMPONENTS:**
- Ⓢ Source Rock
  - Ⓜ Reservoir Rock
  - ⓐ Cap-Rock



**Schematic Play Concept Diagram for the Petroleum System in the Agusan-Davao Basin**