

## SOUTHEAST LUZON BASIN PLAY TYPES

### PLAY 1 / SI - (RB) (REEF BUILD-UP)

- (R) Late Oligocene - Early Miocene carbonates  
Middle Miocene - Late Miocene clastics
- (C) Middle Miocene shales & Late Miocene - Pliocene fine clastics

### PLAY 2 / SI - (AN) (ANTICLINE)

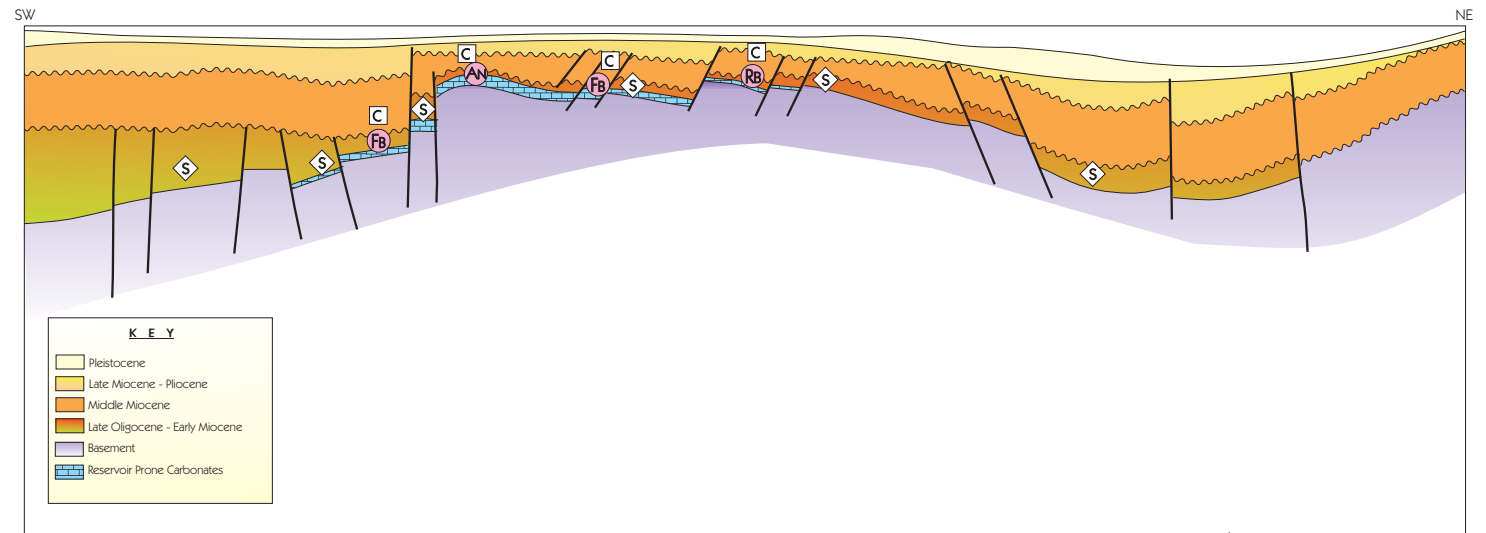
- (R) Late Oligocene - Early Miocene carbonates  
Late Miocene carbonates
- (C) Middle Miocene interbedded shales & Late Miocene - Pliocene shales

### PLAY 3 / SI - (FB) (FAULT BLOCK)

- (R) Oligocene - Early Miocene turbidites & detrital carbonates  
Late Miocene carbonates
- (C) Early Miocene basal fine clastics & Middle Miocene - Late Miocene clastics

#### PLAY COMPONENTS:

- (S) Source Rock
- (R) Reservoir Rock
- (C) Cap-Rock



Schematic Play Concept Diagram for the Petroleum System in the Southeast Luzon Basin